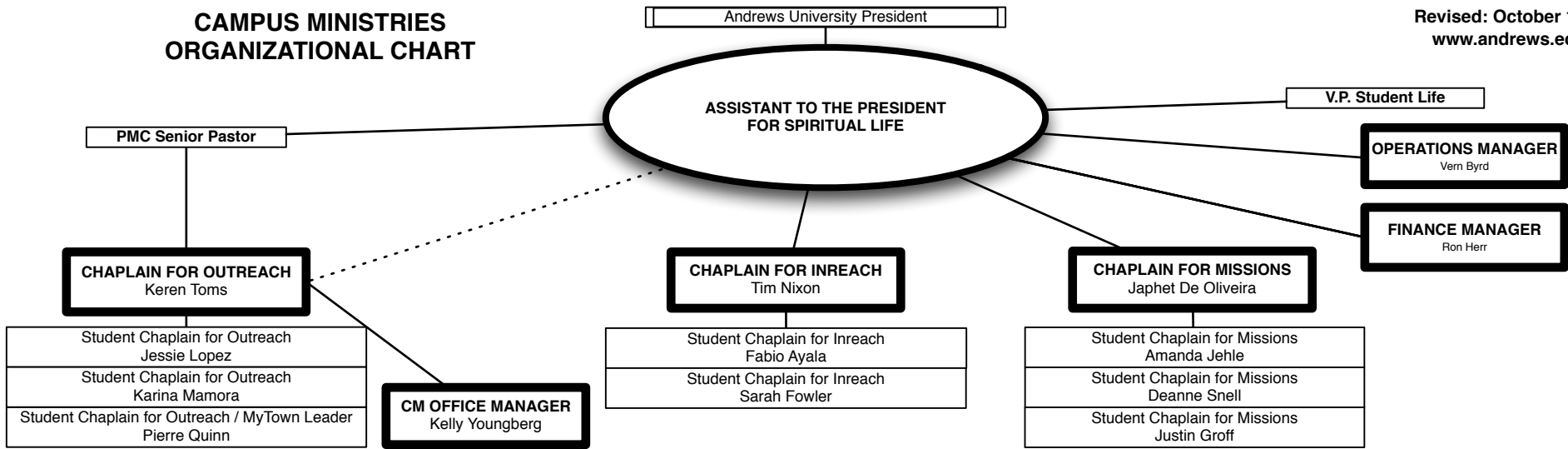


CAMPUS MINISTRIES ORGANIZATIONAL CHART

Revised: October 19, 2009
www.andrews.edu/cm



Ministry Responsibilities

Benton Harbor Street Ministries
Tabari Brannon

Bi-Lingual Kids
Sherin Kalappurayil

Buddies Forever
Tiffany Anderson

CM Radio
Richard Parke

Easter Passion Play
Richard Parke

Homebound

Impressions
Jessica Pagan

Improv
Bryan Cafferky

KidZone
Walter Rogers

Ministry Fair
Karina Mamora

Nursing Home
Brittany Foster

Office Manager Supervisor
Outreach Chaplain

Outreach Marketing
Ryan McCabe

Outreach Visitation
William Sellers

Puppets
Patience Panneflek

R.O.C.K.
Jharony Fernandez

Safety
Bob Fa'apouli

Youth Ministries
Taurus Montgomery

Committees/Meetings

CM Adcom (weekly)

Outreach Staff (weekly)

CM Advisory (monthly)

Spiritual Life (monthly)

LUC Youth Advisory (bi-annual)

Student Life Retreat (twice annually)

CM Retreat (annual)

NAD CM Convention (annual)

Passion Play Exec Advisory (as needed)

PMC Elders Committee (monthly)

PMC Finance Committee (monthly)

PMC Staff (monthly)

Ministry Responsibilities

CM Communication
Office Budget
Preview Weekends/First Stop

Committees/Meetings

CM Adcom (weekly)

CM Advisory (monthly)

Spiritual Life Committee (monthly)

CM Retreat (annual)

Ministry Responsibilities

AUSA Religious VP
Nick Snell

* Friday Vespers
* Spring Student WOSE
* AUSA Chapels

* Committees:
Spiritual Life
CM Advisory
Missions Advisory
Chapel/Worship
All other S.L. Comm

Encounter
Nathan Skaife

Fall Week of Spiritual Emphasis
Inreach Chaplain

Fusion
Josie Asencio

Higher Ground
Jarrod Lutz

Impact
Chris Bartley

Inreach Marketing

Minister of Music
Naomi Best

Mosaic
Daniel Campbell

*New Life Fellowship
Laton Smith

Power Pac Weekends
Inreach Chaplain

SPARK
Abbie Dawes

Small Group Ministries
Simeon Good

Summer SS/Friday Vespers
Inreach Chaplain

Committees/Meetings

CM Adcom (weekly)

Inreach Executive (weekly)

PMC Staff (weekly)

Inreach Leadership (bi-weekly)

Worship Committee (bi-weekly)

CM Advisory (monthly)

Spiritual Life (monthly)

LUC Youth Advisory (twice annually)

Student Life Retreat (twice annually)

CM Retreat (annual)

NAD CM Convention (annual)

Campus Fellowship (as needed)

PMC Board (as needed)

Ministry Responsibilities

CM Leadership Retreat
Missions Chaplain

Missions Budget
Missions Chaplain

Missions Design
Heather Tucker

Missions Special Events
Korissa Mattson

Missions Marketing
Brent Sherwin

Missions Interest
Erin Hoteling and Leah Rodriguez

Open Word
Missions Chaplain

Thursday Chapels
Katie Hannah

Wednesday Co-Ed Worship
Missions Chaplain

Committees/Meetings

CM Adcom (weekly)

Missions Staff (weekly)

Chapel Advisory (monthly)

Spiritual Life (monthly)

Missions Advisory (bi-monthly)

CM Advisory (monthly)

Co-Curricular Committee (monthly)

LUC Youth Advisory (twice annually)

Student Life Retreat (twice annually)

CM Retreat (annual)

NAD CM Convention (annual)

Office Hours

Monday - Thursday 11am to 7pm
Friday 11am to 3pm

Closed for chapel, convocations,
holidays, and WOSES

█ denotes members of weekly CM Adcom

Spiritual Life Committee Members

Students: Action (Social); Adelante - Spanish Club; AFIA - Asian Club; AUSA President; AUSA VP; Benton Harbor Outreach; Black Students Christian Forum; Easter Passion Play; Encounter SS; Higher Ground SS; Impact; Mosaic; Seminary Student Forum; WOP/PowerPac; Student Chaplain for Outreach; Student Chaplain for Inreach; Student Chaplain for Missions; Student Missions Director; The Passage.

Staff: Academic Admin VP; Advancement VP; CM Communication Director; Center for College Faith Chair; Chaplain for Inreach; Chaplain for Missions; Chaplain for Outreach; Club Coordinator; Dean of Men; Dean of Women; Enrollment Services VP; President; Seminary Chaplain; Student Life VP; Theology Dept; University Relations; Permanent Invitees - LUC Office & Local Conference Officers; CM Business Manager.

Chair: Pastor Ron Whitehead **Vice-chair:** Pastor Dwight Nelson **Secretary:** Rebecca Cross

*under review