

National

The New York Times

BRITISH
AIRWAYS

HOME

JOB MARKET

REAL ESTATE

AUTOS

NEWS

International
National
- Columns
Washington
Campaign 2004
Business
Technology
Science
Health
Sports
New York Region
Education
Weather
Obituaries
NYT Front Page
Corrections

OPINION

Editorials/Op-Ed
Readers' Opinions

FEATURES

Arts
Books
Movies
Travel
NYC Guide
Dining & Wine
Home & Garden
Fashion & Style
Crossword/Games
Cartoons
Magazine
Week in Review
Multimedia/Photos
Learning Network

SERVICES

Archive
Classifieds
College
Personals
White Papers
Theater Tickets
NYT Store
NYT Mobile
About NYTDigital
Jobs at NYTDigital
Online Media Kit
Our Advertisers

MEMBER CENTER

Your Profile
E-Mail Preferences
News Tracker
Purchase History
Site Help
Privacy Policy

NEWSPAPER

Home Delivery
Customer Care
Electronic Edition
Media Kit
Community Affairs
Text Version

Advertiser Links:
Whats Your IQ?

MSN Video. See the
world from your PC.

SEARCH [Go to Advanced Search/Archive](#)

Past 30 Days

[GO TO MEMBER CENTER](#)[LOG OUT](#)

Welcome, jmoon49103

RELATED SITES

• [U.S. Department of Agriculture](#)
Information about Bovine Spongiform
Encephalopathy

• [Frequently Asked Questions](#)

• [Background Data on U.S. Beef
Industry](#)

NEW IN REAL ESTATE



House of the day

Murray Hill-Manhattan, NY

This gracious 2-bedroom apartment
boasts open exposures and views of the
Chrysler Building, a traditional living
room with marble wood burning
fireplace, and a renovated kitchen.

[Search](#) for this and many other dream
homes in Manhattan at
[realestate.nytimes.com](#).

Mad Cow Disease in the United States

Mad Cow Quandary: Making Animal Feed

By DENISE GRADY

For years, calves have been fed cow's blood instead of milk, and cattle feed has been allowed to contain composted wastes from chicken coops, including feathers and feces.

Ban Urged on All Animal Protein for Cattle

By DONALD G. McNEIL Jr. and DENISE GRADY

An international panel advising the Agriculture Department recommended a ban on feeding all animal protein to cattle and also advocated testing many more head of cattle.

Mad Cow Disease Raises Safety Issues Beyond the Kitchen

By DONALD G. McNEIL Jr.

On Monday, the F.D.A. banned the use of dead or disabled cows in the products it regulates, as well as high-risk parts from cows older than 30 months.

Blood Transfusion Suspected in New Mad Cow Case in Britain

By ALICIA AULT

A ban on the feeding of cattle blood to calves was partly based on a new case of mad cow disease in which a Briton may have been infected through a blood transfusion.

Rules Issued on Animal Feed and Use of Disabled Cattle

By DENISE GRADY and DONALD G. McNEIL Jr.

The Food and Drug Administration imposed new rules to prevent the spread of mad cow disease, including a ban on feeding cow blood and chicken wastes to cattle.

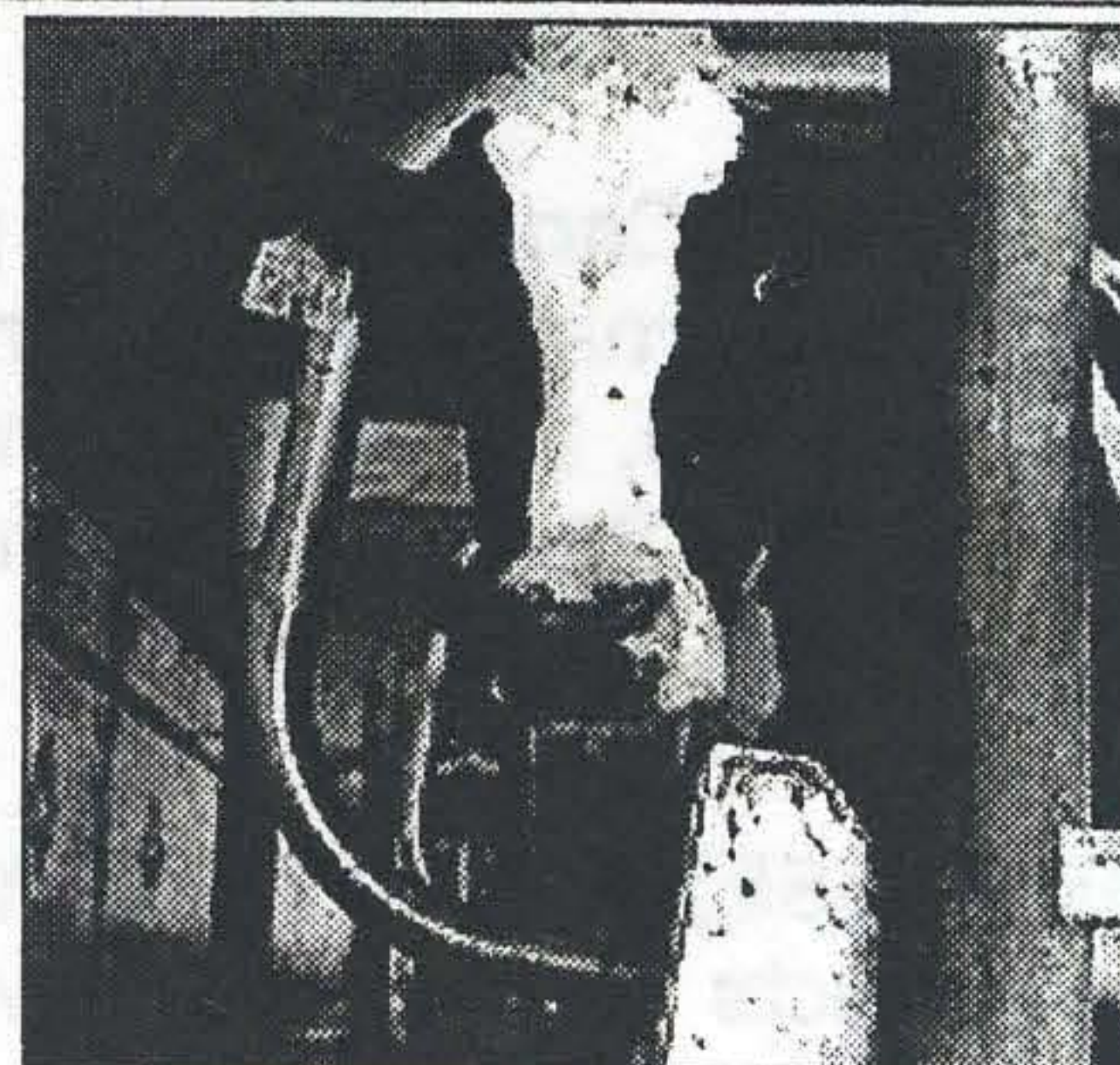
Administration Backs a Food-Labeling Delay

5 More Cows Found From Canadian Herd

Mad Cow Case Heightens Debate on Food Labeling

Test Confirms Infected Cow Was Born on Canada Farm

What's a Canadian Cow? Trade Blurred



Daniel Pepper

IN THE MAGAZINE | THE WAY WE LIVE NOW

Cattle Futures?

By MICHAEL POLLAN

Perhaps learning how beef is made will drive us back to an older way of rearing cows.

OP-ED CONTRIBUTOR

The Cow Jumped Over the U.S.D.A.

By ERIC SCHLOSSER

You'd have a hard time finding a federal agency more completely dominated by the industry it was created to regulate than the Agriculture Department.

A Time for

Finesse:

Marketing Beef After a Mad Cow Discovery

By SHERRI DAY

Despite the discovery of mad cow disease in the United States last week, Burger King has decided to go ahead with a new Whopper television campaign.



EATING WELL

Warily Searching for Safer Beef

By MARIAN BURROS

How consumers are responding to the mad cow scare, and what to look for to assure you are getting safe beef.

• [Alternatives to Supermarket Steaks](#)

DIETERS

Some Atkins Fans Will Switch;