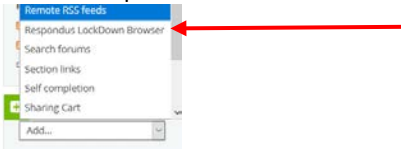



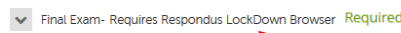
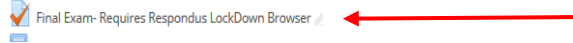
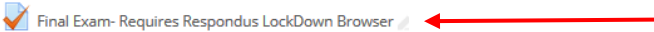


Learning Hub Quick Reference Guide: Respondus Lockdown Browser – Teacher



<p>□ What is Respondus Lockdown Browser</p>	<p>Information:</p> <ul style="list-style-type: none"> Software tool is used with quizzing/testing that locks down the students browser so they are not able to be on any other websites while taking their quiz/test.
<p>□ How do I add Respondus Lockdown Browser to my class</p>	<p>How to:</p> <ul style="list-style-type: none"> Go to your course Turn editing on Add the Respondus Lockdown Browser from the Add Block box at the bottom right of your course  <ul style="list-style-type: none"> Page will refresh with the Respondus Lockdown Browser on the right side of your course
<p>□ How do I assign Respondus Lockdown browser to a specific test/quiz</p>	<p>How to:</p> <ol style="list-style-type: none"> In the Respondus Lockdown – click on Dashboard  If you want to watch the tutorial go ahead, but if you do not want to.. Put a check mark in the Don't show this page Click Continue to Lockdown Browser  <ol style="list-style-type: none"> All of the assignments that are using the quizzing tools will show Click on the down arrow to the left of the quiz/test you want to use with LockDown Browser  <ol style="list-style-type: none"> Click on Settings Click on Require Respondus Lockdown Browser for this exam The Advance Settings box will show Click on the + sign Select Allow student to take the exam with an ipad... If you have an exam that the student needs to have access to a website, you copy in the website into the box Click Save +Close  <ol style="list-style-type: none"> The quiz will now show that LockDown Browser is required Click on the name of the course to return to the front page of the course The quiz/exam will now have Requires Respondus LockDown Browser 
<p>□ What do the students need to do to use Respondus Lockdown Browser</p>	<p>Information/Recommendation:</p> <p>Recommended that a trial quiz with at least one question is created a few days in advance to make sure that all students are able to get Respondus Lockdown Browser set and working. This way it will not take time away from the quiz/test</p> <p>How to:</p> <ol style="list-style-type: none"> Click on the quiz/exam that requires the LockDown Browser 

- Click on download LockDown Browser – If you know that you have never done this before. If you have done it recently, it does not need to be done again.

Download LockDown Browser | Check your LockDown Browser Setup

Launch LockDown Browser

- If the computer does not have the LockDown Browser already downloaded, it will automatically start the download process

- Click on Save file

- Click Install Now



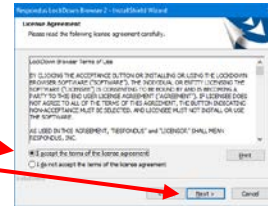
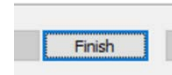
- Choose English

- Click Next

- Check I accept the terms of the license agreement

- Click next

- Click Finish



- Go back to the quiz

- Click on the quiz

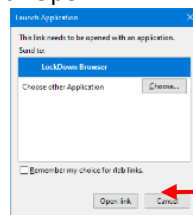
- Click Open link

Open LockDown Browser?

<https://learninghub.andrews.edu> wants to open this application.

Open LockDown Browser

Cancel



- Click Yes – to allow changes

- Student takes the quiz/exam