



A. Aerial photo of *Tell Hesbân* looking toward the east. Area C is visible in the center of the picture on the steep western slope. Area A is on the top of the tell (above Area C in this photo), and Areas D and B are to the right of Area A

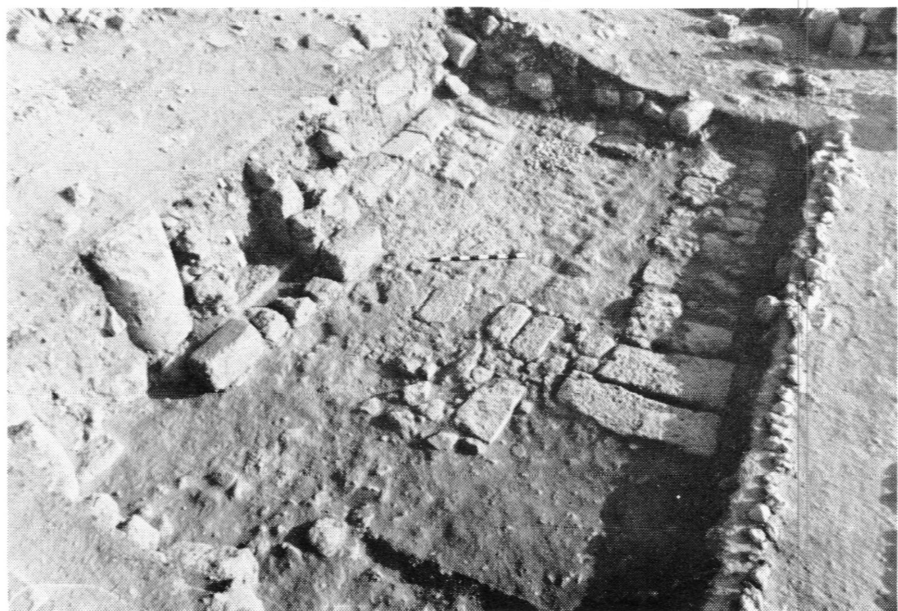


B. The staff of the 1971 Heshbon expedition

PLATE II



A. Evidence of ancient quarrying south of the northern outside wall of the church (right foreground) in Square A.2



B. Square A.5 in the early stage of excavations. The northern outside wall of the church is visible underneath the scale stick. To its left in the west balk is an Islamic doorway



A. Gateway of the northern cave of Roman times in Square A.1 as seen from the interior



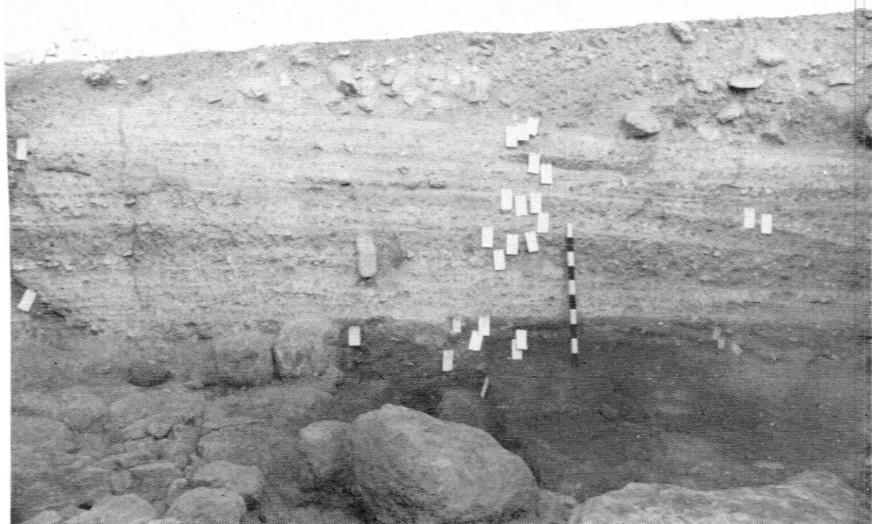
B. Stone anvil in the northern cave of Roman times in Square A.1



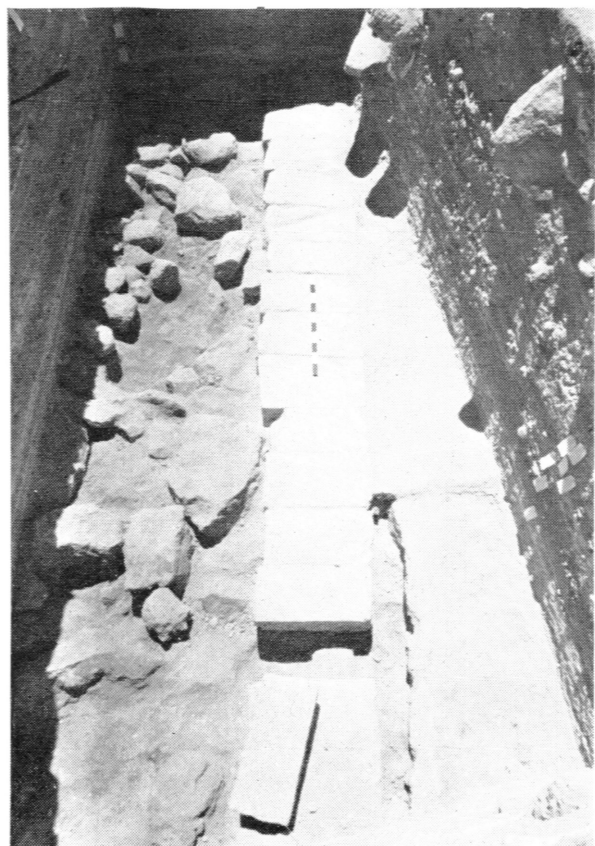
A. Column base (to the left of the scale stick) on its support wall in the balk of Squares A.3/A.4, showing cobbled surface built up to the base



B. Foundation wall under the apse support wall in Square A.3 illustrating the relation of the remaining tesserae of the mosaic floor to this foundation



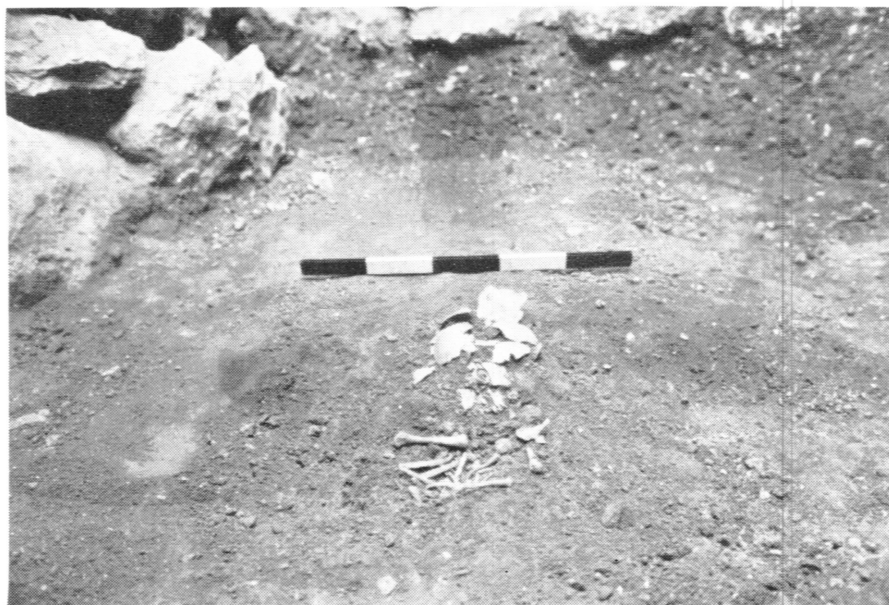
A. West balk of Square B.2 showing the light makeup layers of a Roman roadway. Wall B.2: 62 is in the left foreground



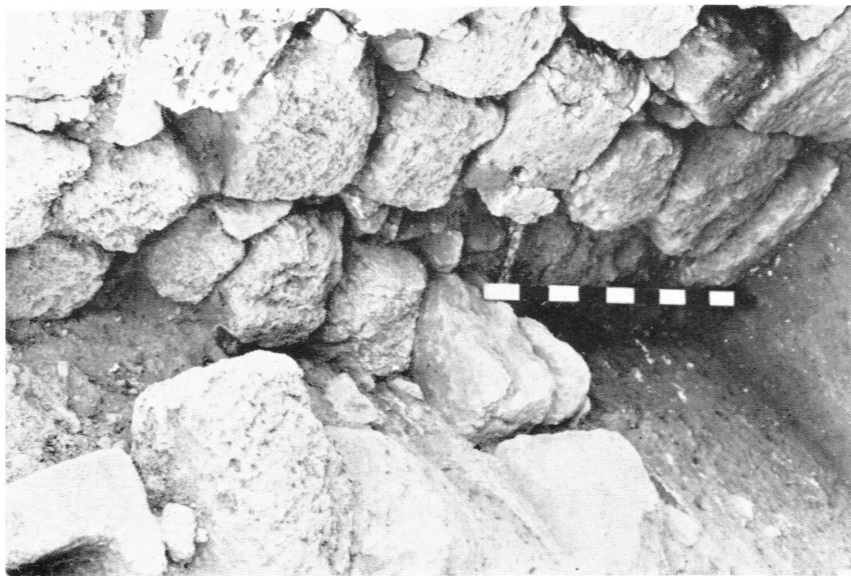
B. Row of "curbing" stones of the Roman roadway in Square B.3, looking south



A. The "bench" inside the north building in Square C.4. Portions of plaster running over the bench and up the wall are visible under the scale stick



B. View of the fetal skeletal remains inside the north building in Square C.4



A. View of the blocked doorway from inside the north building of Square C.4. The east balk at left cuts the door excavation vertically in half, leaving the right jamb line and arched lintel partly exposed to the right and above the scale stick



B. Water Channel C.1:15 in Square C.1 with capstones removed, looking northeast



A. Water system in Square C.4. The C.4:68 water channels are in the right foreground. The mouth of Cistern C.4:7 is seen at the left, and the opening to Basin C.4:71 in the south balk is visible in the center of the picture



B. Wall C.1:8 of Byzantine times

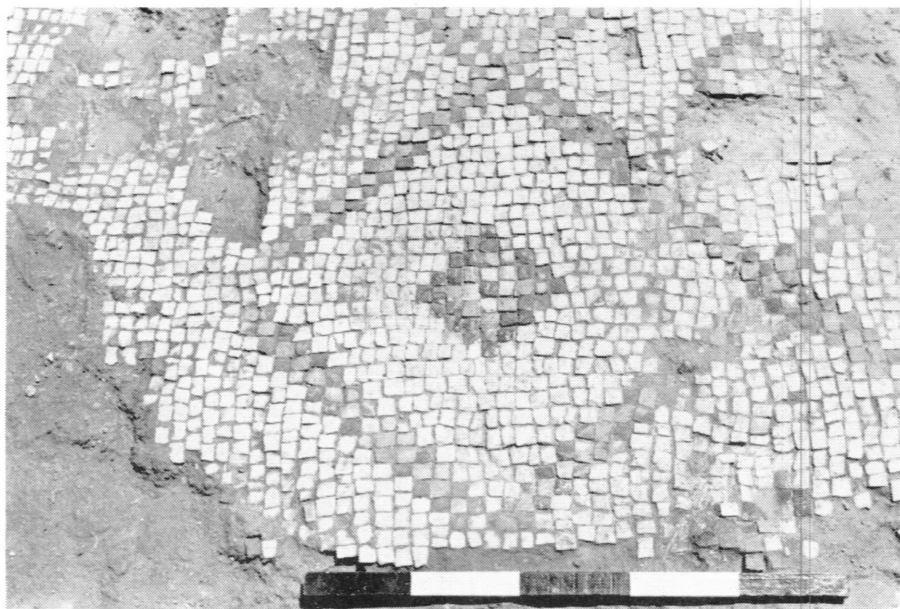


A. Flagstone pavement in Squares D.1 and D.5. The mouth of Cistern D.5:5 is in the left foreground and the western wall of the vaulted room of Islamic times is in the upper part of the picture



B. Looking up from the bottom of Cistern D.5:5 toward its vaulted ceiling with the right mouth open to the sky in Square D.5, while the other mouth is underneath unexcavated debris

PLATE X



A. Part of the Byzantine tessellated Floor D.6:23 of Square D.6 East. The diagonal red-yellow-red bands are set in a background of white tesserae. Colors in the central diamond cluster are red, white, blue, and yellow



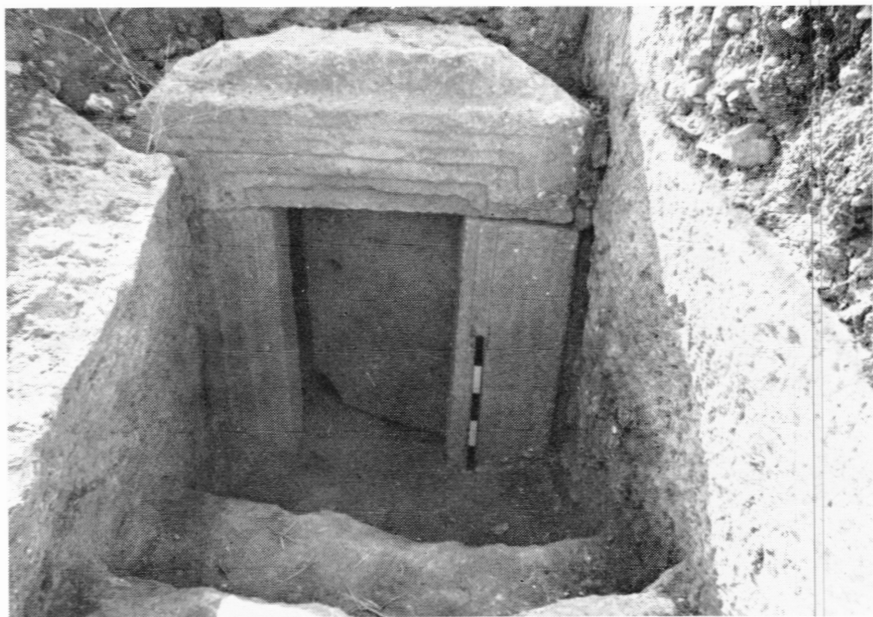
B. East face of Wall D.6:3. Phase 3a comprises the top five courses and the fill in the blocked doorway beneath the white tag. Phase 3b is represented by the doorway itself, while Phase 3c is the step at the bottom



A. The Rolling Stone Tomb (F.1) as seen from the outside



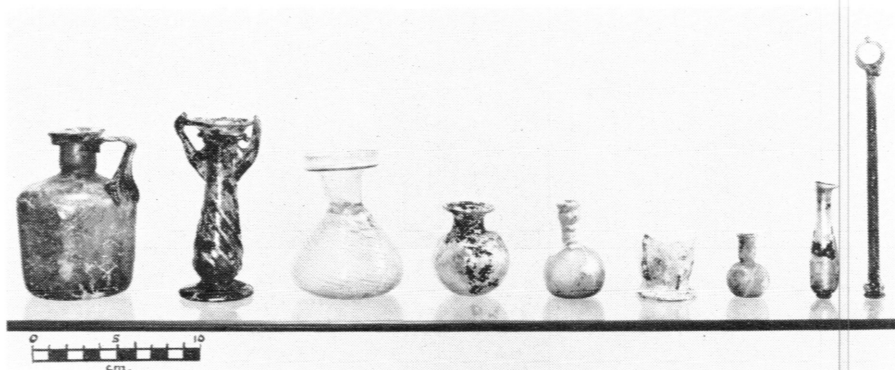
B. Looking into one of the loculi of Tomb F.6 with the bones scattered as discovered



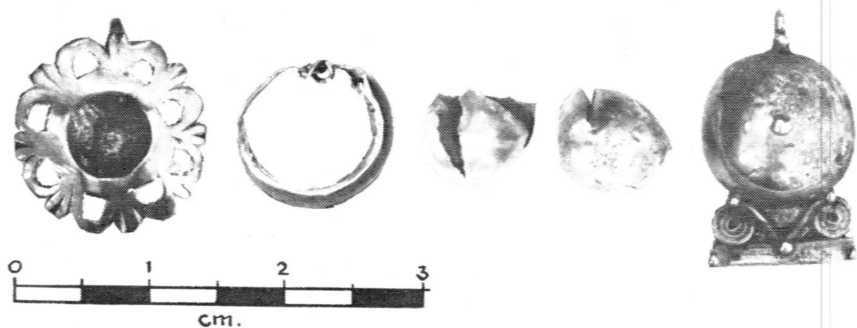
A. The Swinging Door Tomb (F.5) as seen from the outside



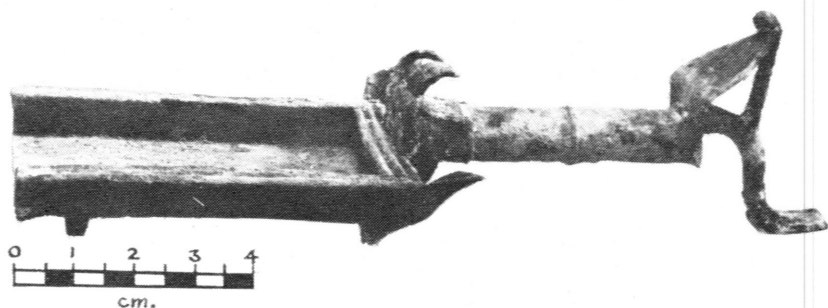
B. The doorway of Tomb F.5 as seen from the interior



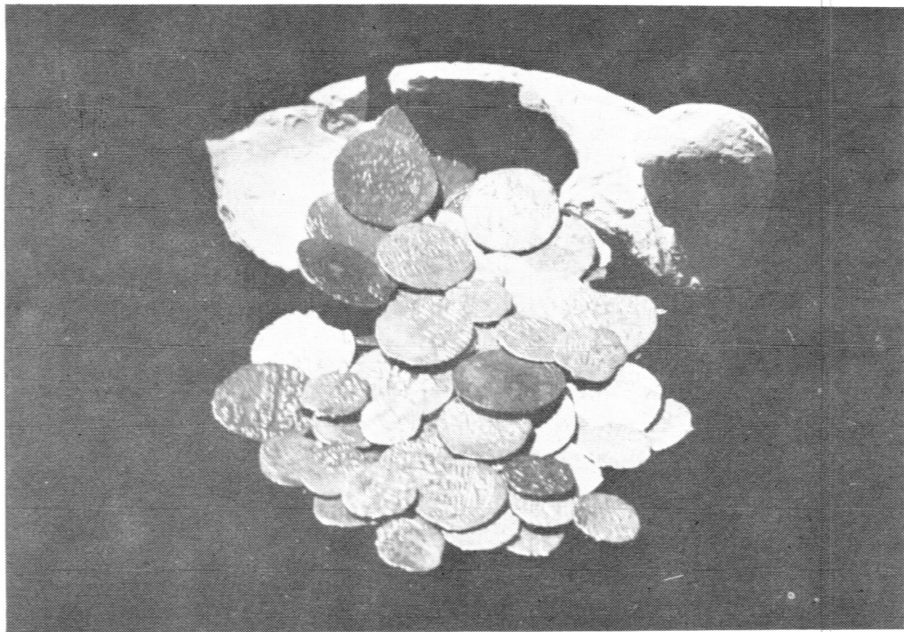
A. Glass vessels from Square C.1 (fifth from left), and from Tombs F.8 (third from left) and F.6 (all others). Photo: Abu Hannah



B. Gold jewelry from Tombs F.4 and F.6. Photo: Abu Hannah



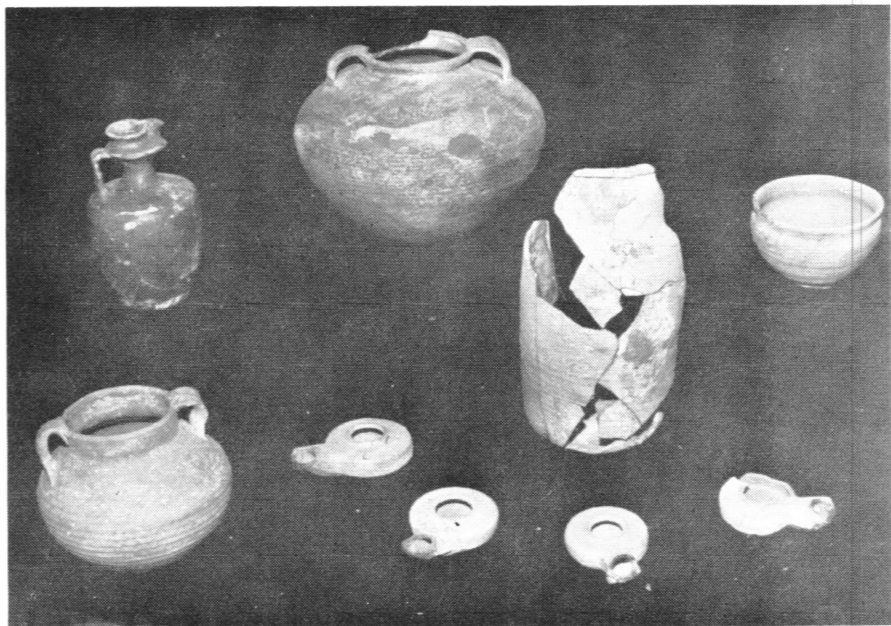
C. Bronze incense shovel from Tomb F.4. Photo: Abu Hannah



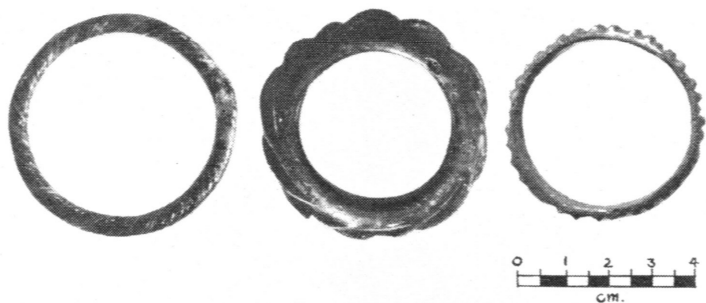
A. Hoard of Mamlūk coins with the lamp in which they were found in Locus C.4:37



B. Cosmetic container from Tomb F.6. The body of the swan is a shell; the lid, wings, tail, and neck and head are of carved ivory. Photo: Abu Hannah



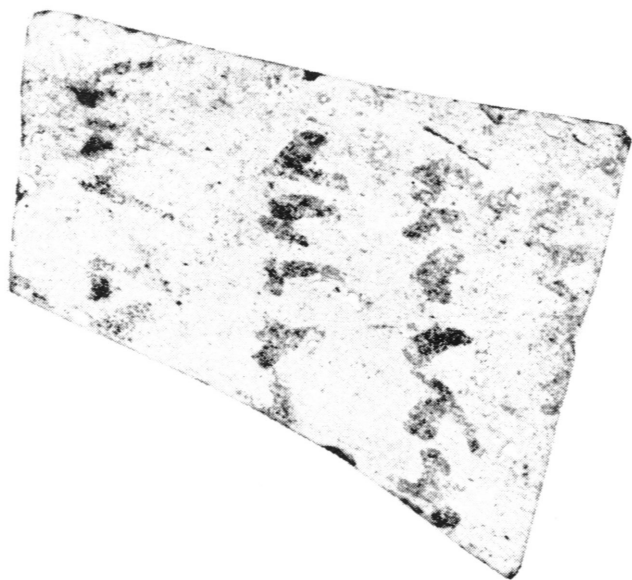
A. Some of the Early Roman pottery from Tomb F.6



B. Glass bracelets from (left to right) Tombs F.4, F.1, and F.10. Photo: Abu Hannah



C. Bronze fibula from Tomb F.4. Photo: Abu Hannah



A. Heshbon Ostrakon II (magnified about 1½ times). Photo: John L. Bechtel



B. Heshbon Ostrakon III (slightly magnified).
Photo: John L. Bechtel