

A. A view of Tell Heshbân from down in the Wadi el-Majarr on the west.
Photo: Paul J. Bergsma.



B. The staff of the 1974 Heshbon expedition. Photo: Paul H. Denton.

PLATE II



A. Squares A.7 and 8. View East. The southern half of the Islamic bath complex. From right: entrance hall, lounge, access hallway, bathroom. Photo: Paul H. Denton.

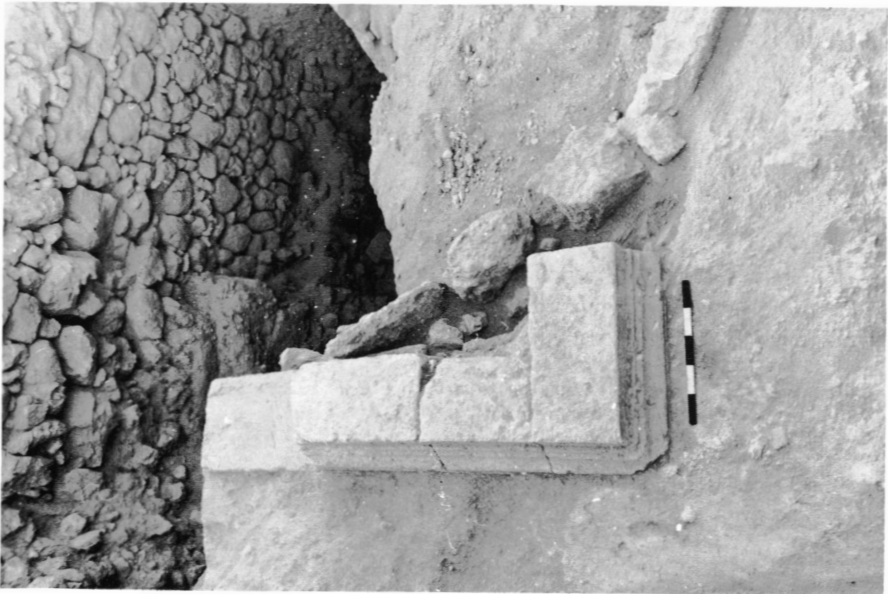


B. Square A.5. View West. The Umayyad ceramic *tabun*. Note the flue or fuel feeder at the top. Photo: Henry H. Lamberton.



A. Square B.1 (North Extension). View East. Roman "Podium" B.1:154 (foreground) and "Podium" B.1:153 (background), cut by Early Byzantine Kiln B.1:10. Note the Roman-Byzantine white roadway layers, freshly trimmed in the balks of the north extension. Photo: T. Paul Bonney.

B. Square B.1 (North Extension). View South. Roman "Podium" B.1:153, cut by Early Byzantine Kiln B.1:10. In the background, note Late Hellenistic Wall B.1:17 (=Wall B.2:62). Photo T. Paul Bonney.





A. Square B.2. View East. Iron II/Persian header-stretcher Wall B.2:84 and vertical Bedrock B.2:114B, with Plaster B.2:113 (eastern boundary of the Stratum 18 "reservoir."). In front of the wall, note the soil layers of Hellenistic Stratum 16, and in back of it, note the partially dismantled B.2:112 wall of Iron I Stratum 19. Photo: T. Paul Bonney.



B. Square B.4. View East. Vertical Bedrock B.4:191, B.4:195, and B.4:192, with Plaster B.4:190 (eastern boundary of the Stratum 18 "reservoir"). Note Channels B.4:168 on top of collapsed Bedrock B.4:195, and Channel B.4:250 on top of Bedrock B.4:193. Also note Channels B.4:242 and B.4:244, between Bedrock B.4:194 and B.4:195 (beneath "Channel" B.4:275A), and Wall B.4:222, beneath Bedrock B.4:193 (inside "Cave" B.4:247). Photo: T. Paul Bonney.



A. Square B.4. View Southeast. Pool B.4:265, with the B.4:249 Late Hellenistic clay layer partially removed. Note also partially removed Early Roman Wall B.4:222, beneath Bedrock B.4:193, and also Bedrock B.4:195, collapsed in the foreground onto Bedrock B.4:235. Photo: T. Paul Bonney.



B. Square D.4. View Southeast. Ayyūbid/Mamlūk vaulted Room D.4:24, with Bedrock D.4:25 in left foreground. Photo: Robert H. Lloyd.

PLATE VI



A. Square D.4. View West. Late Roman Wall D.4:32A, constructed on top of Early Roman Doorway D.4:32B, with Thresholds D.4:45, 51. Photo: Robert H. Lloyd.



B. Square D.4. View East. Late Roman D.4:34=53 rock tumble against west face of Wall D.4:32A and "Bench" D.4:78, and resting on D.4:37=64 soil layer of Late Roman Stratum 10. Photo: Robert H. Lloyd.



A. Square D.5. One of the flagstones from Pavement D.5:11 after removal, showing a Byzantine cross carved onto a slight bevel. The stone, originally an architectural fragment, was turned upside-down when re-used in the flagstone pavement so that the cross and bevel did not show. Photo: Paul H. Denton.

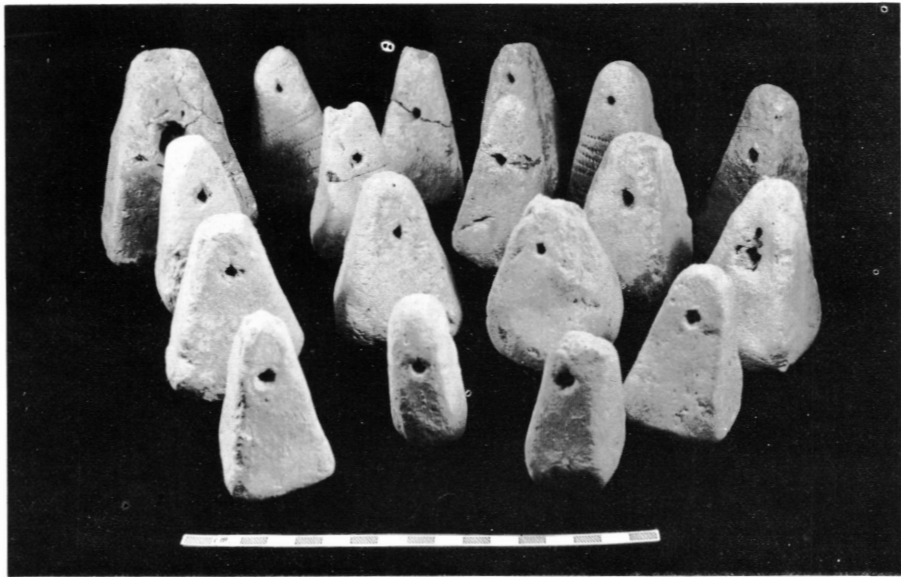


B. Square D.2. View West. Room with Walls D.2:81 (the west wall) and D.2:85 (the south wall) ending in doorjambs; Wall D.2:55B (the east wall) lacks an east face; also visible are the three phases of Wall D.2:26/21 (the north wall)—Wall D.2:26, the earliest phase, can be seen extending across the whole square (partially removed at the bottom of the picture); Wall D.2:21, the second phase, can be seen towering high above Wall D.2:26 in the west; and the last phase, the “skin”, which was removed down to the top of Wall D.2:26, can be seen angling off to the south from wall. Photo: T. Paul Bonney.

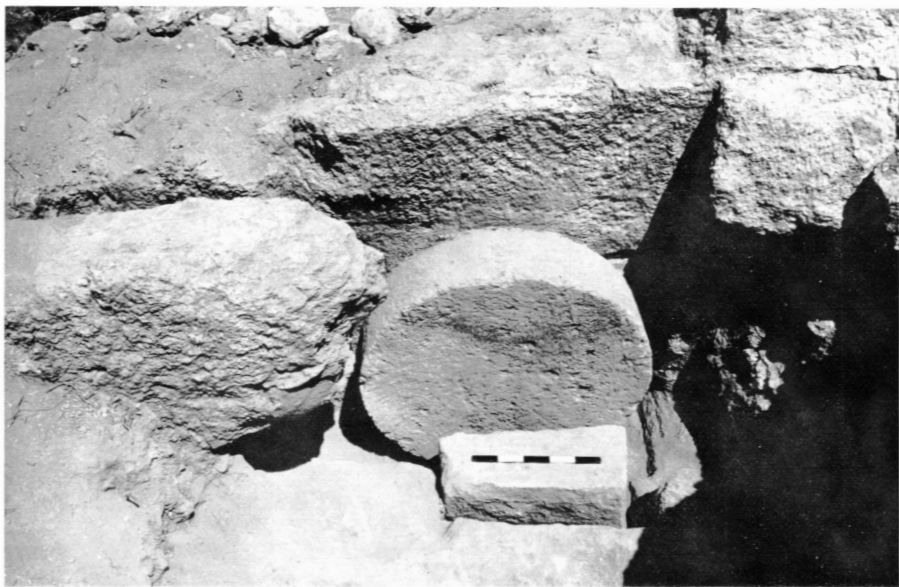
PLATE VIII



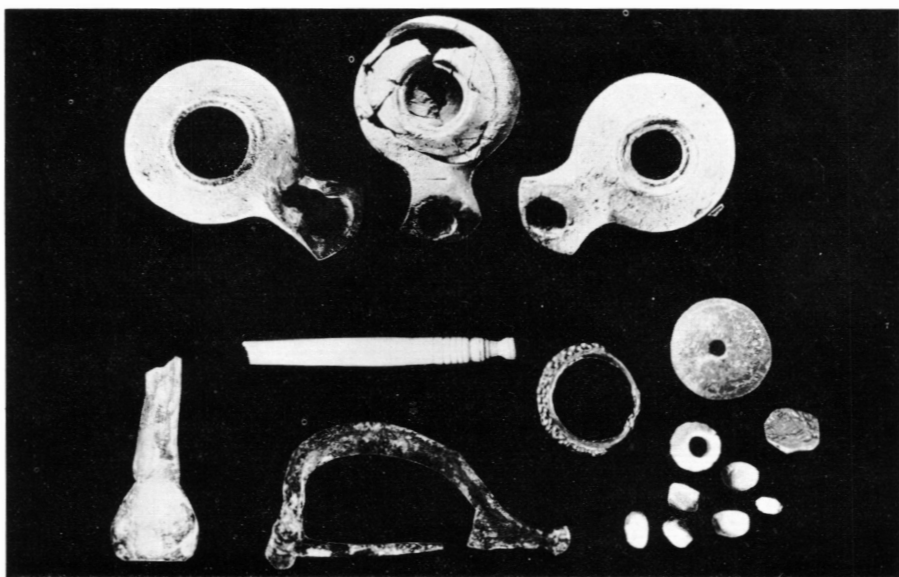
A. Square D.1 North. View East. Crude Drain D.1:80 angling NE-SW. The meter stick is lying on top of surface D.1:81/82. Photo: T. Paul Bonney.



B. A group of pyramid-shaped clay weights found in "Silos" D.2:77 and A.5:62. Photo: Paul H. Denton.

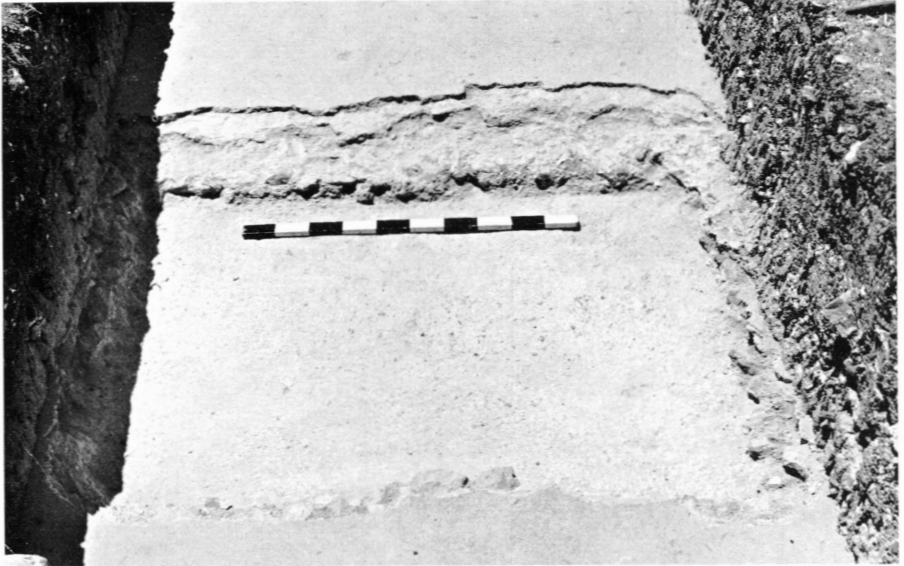


A. "Rolling Stone Tomb" G.10. View East. Note that the tomb entrance is blocked by a rolling stone which ran in a track (to the left) cut from bedrock. Photo: Robert H. Lloyd.



B. An assortment of objects still left in (robbed) Tomb G.10 included Herodian lamps, a glass bottle, an ivory pin, a bronze fibula, a gold earring, a stone spindle whorl, a Nabataean coin (Rabbel II, A.D. 71-106), and several beads. Photo: T. Paul Bonney.

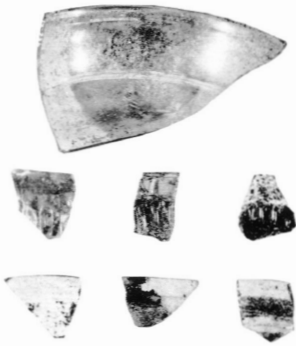
PLATE X



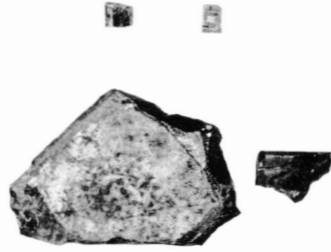
A. Reservoir G.5A. View West. Note the two distinct phases of cement surfaces: the meter stick is lying on top of the Phase 2 surface; above it are the makeup layers for the Phase 1 surface seen at the top of the picture. Photo: Robert H. Lloyd.



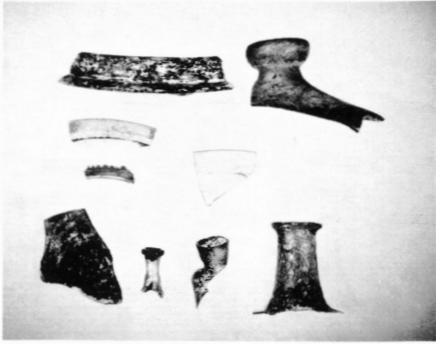
B. Square G.8A. View North. Early Roman burial of a young male at Umm es-Sarab. Photo: Theodore J. Chamberlain.



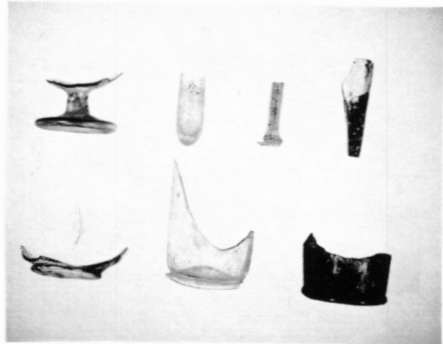
A



B



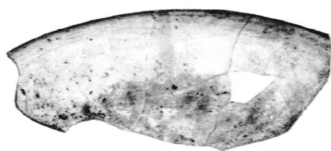
C



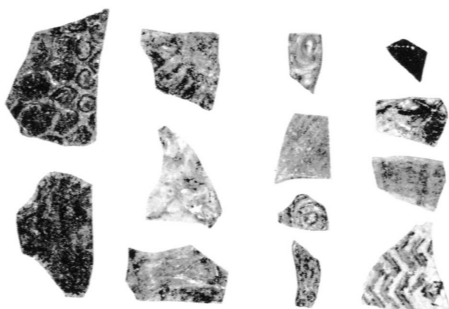
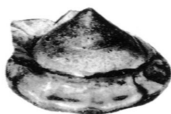
D

- A. Fragments of Late Hellenistic Glass Bowls.
B. Roman/Byzantine Glass Mosaic Tesserae and Gold Glass Ingot Fragments.
C. Rims of Roman/Byzantine Glass Vessels.
D. Bases of Roman/Byzantine Glass Vessels.

PLATE XII



A



B



C



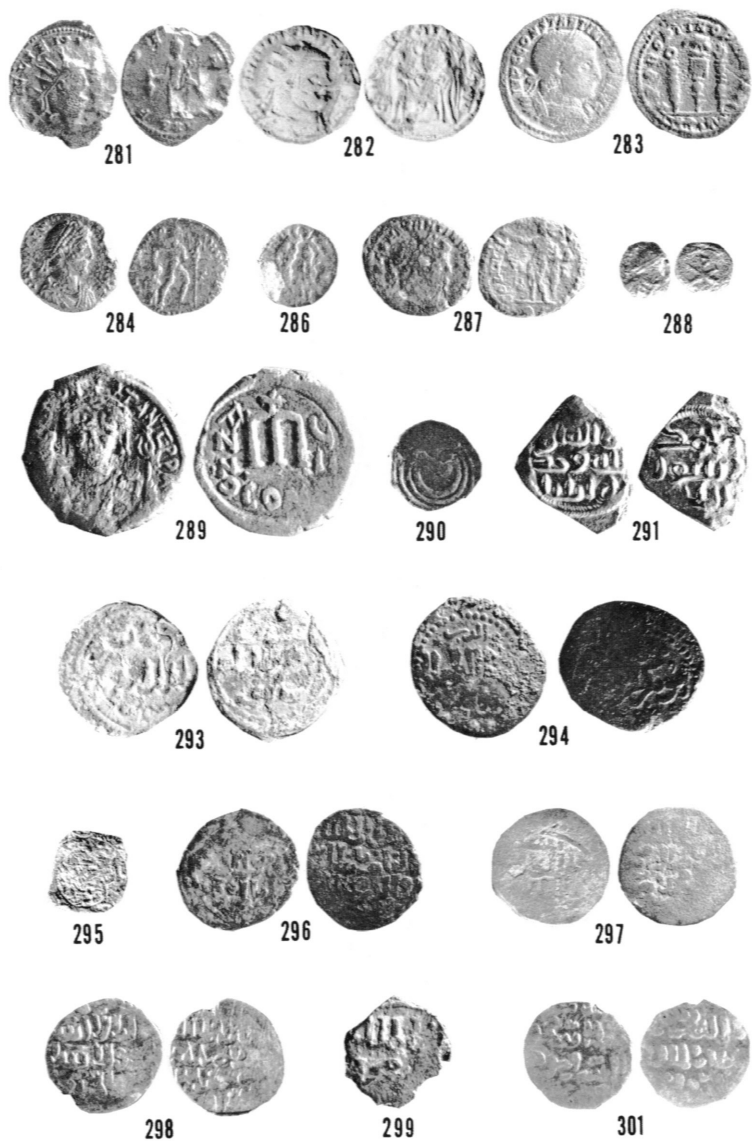
D

- A. Glass Bowl, Islamic, 8-9th century.
B. Fragments of Islamic Glass with Mold-Blown and Pincer Decoration.
C. Fragments of Islamic Glass with Trail Decoration.
D. Fragments of Islamic Glass Bracelets.

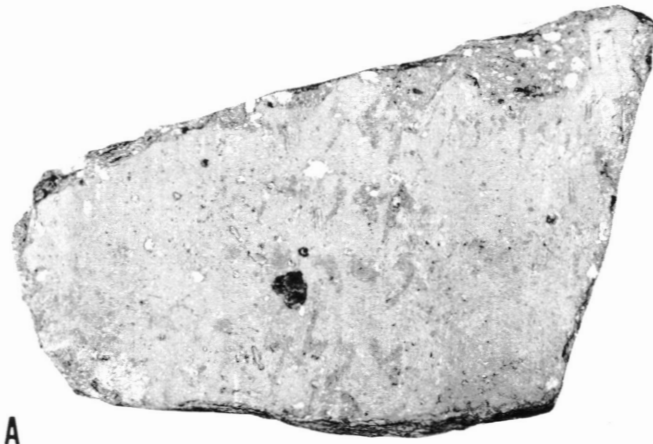


Nos. 236-259: Maccabean, Nabataean, Roman, Byzantine, and Islamic coins from the 1973 excavations at Heshbon. Nos. 269-279: Ptolemaic, Maccabean, Phoenician, Nabataean, and Roman coins from the 1974 excavations. Photos: Paul H. Denton and Eugenia L. Nitowski.

PLATE XIV



Roman, Byzantine, and Islamic coins from the 1974 excavations at Heshbon. Photos: Paul H. Denton and Eugenia L. Nitowski.



A



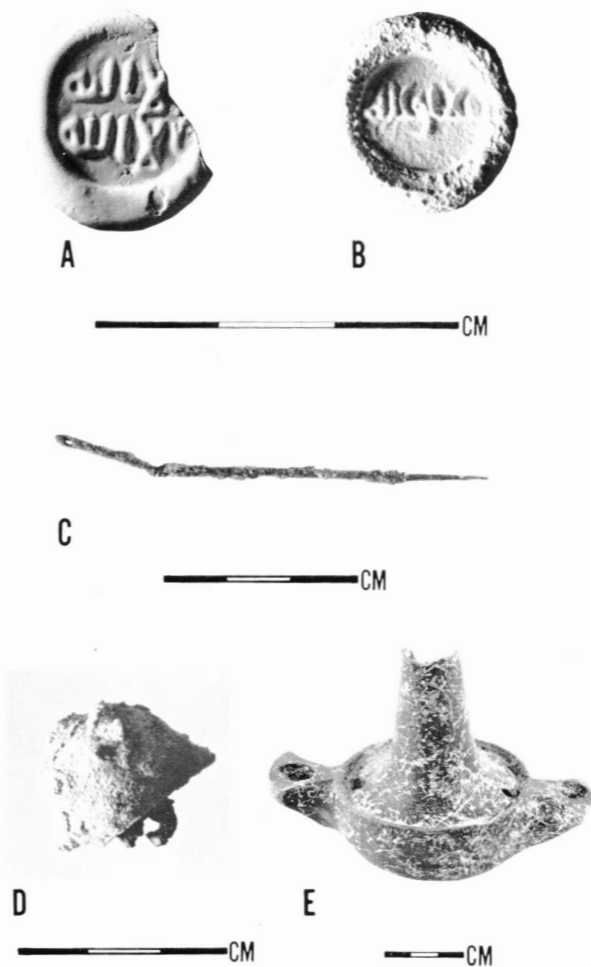
B



C



- A. Ammonite Ostrakon XI from Square B.2.
B. A Greek Potter's Date-Stamp from Square B.4.
C. Greek Ostrakon X from Square C.5.
Photos: Paul H. Denton and Eugenia L. Nitowski.



- A. Plaster Cast of Glass Weight H74 2106 from Square G.6.
B. Plaster Cast of Glass Weight H74 2060 from Square A.9.
C. Iron Age Bronze Needle (note preserved eye) from Square B.4.
D. Lead Flogging Head with iron attachment ring from Square D.2.
E. Double-Nozzled Herodian Lamp from Tomb E.6.
Photos: Paul H. Denton and Eugenia L. Nitowski.