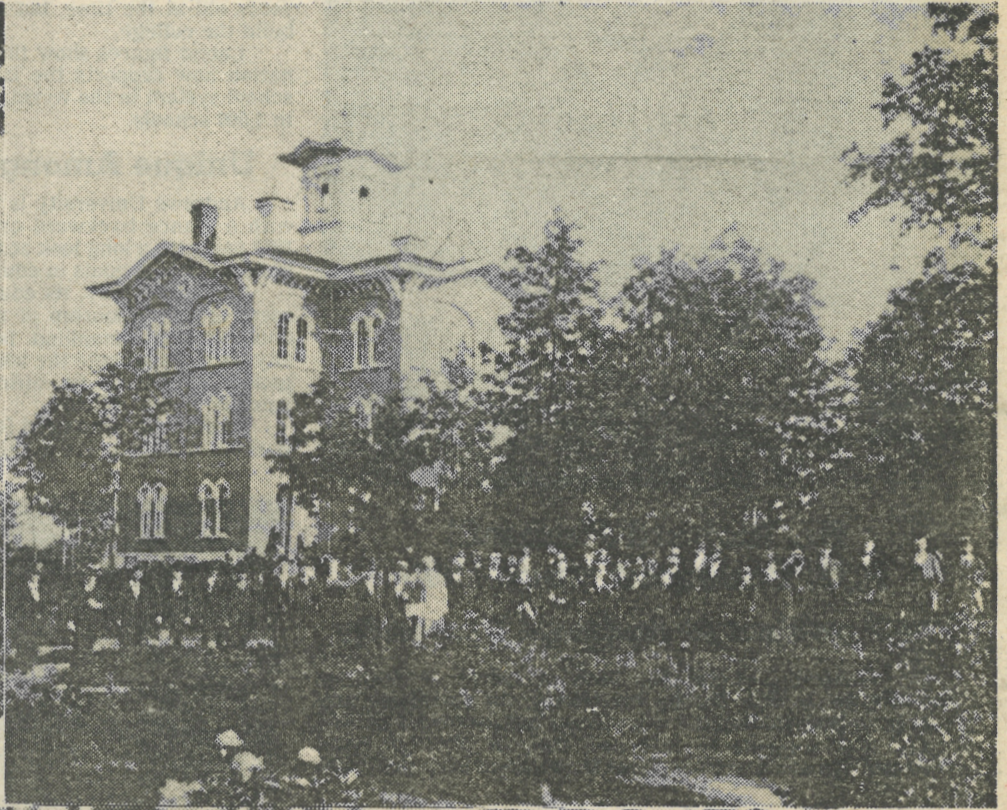


ANDREWS UNIVERSITY CELEBRATES CENTENNIAL

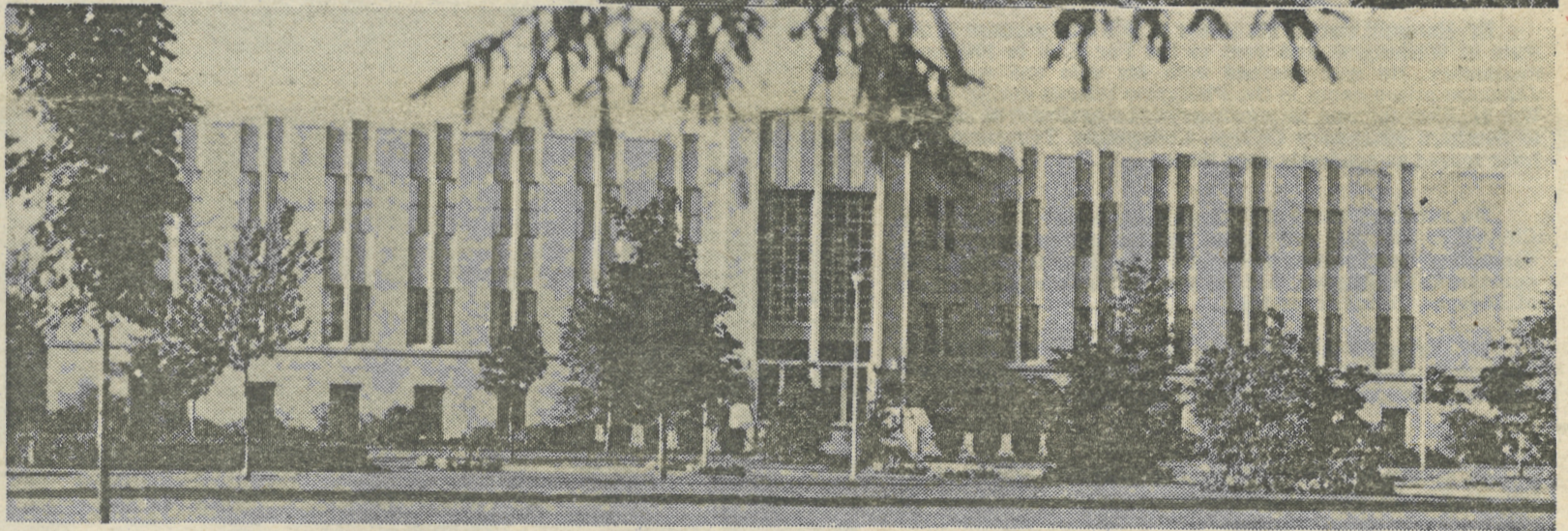


Andrews University Evolves . . .

Upper Right
Battle Creek College (forerunner of Andrews University), 1874

Upper Left
First Administration Building after college was moved to Berrien Springs, 1901.

Bottom
Andrews University Administration Building, 1974



ONLY IN AMERICA . . .

All Americans should be grateful for the excellent system of higher education in America that has been developed over the past two hundred years by persons of great insight and vision. Most Americans are not aware that in certain aspects the American system is far ahead of the higher educational systems in the rest of the world.

The special strength of the United States system of higher education is its pluralism. That is, the state governments provide opportunity for private colleges to exist alongside the publicly sponsored colleges and universities.

An individual citizen or groups of citizens who wish to sponsor a college or university for specialized goals or particular purposes, or even with very general purposes, are able to obtain a legal charter from their state, usually through a bureau of incorporations of that state. This charter enables the institution to own property and to operate in such a way as to achieve its own unique goals and to attempt to meet its own special purposes by developing programs to obtain those purposes and goals. As long as the college or university maintains a quality of education generally in line with the average college or university in America, the officials of the state that chartered it will permit the charter to continue. In fact, charters of educational institutions in America are considered relatively sacrosanct, and it is rare that such a charter has ever been revoked.

Operating under this rather free legal arrangement, the college or university is able to demonstrate what it can do in providing quality education to achieve its own goals; and each institution is judged by its sister institutions — namely by the quality of its output and its graduates as compared to gradu-

ates of the rank and file of both public and private institutions in the United States.

This system is unique to America at the present time. Centuries ago, in a few countries, private colleges were chartered, but today it is almost unheard of for a group of citizens to obtain a legal charter for a private college in other places of the world. In some countries the private college does exist, but it does so without a legal charter, and its graduates do not have official recognition.

There are a number of very great strengths in the system of pluralism of higher education in this country. Chief among them is that the private college or university is more free to change its programs and to be innovative. This has resulted in stimulating new methods of education. As a result, private colleges and universities have produced some of the finest American institutions. One need only to mention institutions like Harvard, Dartmouth, Yale, Columbia, Massachusetts Institute of Technology, New York University, Duke, University of Chicago, and a host of others.

The fact is, the pluralistic system has been good for education in America in that the competition between the private and the public colleges has resulted in developing a higher quality in both.

A second major strength in America is the method of accrediting these institutions. Accrediting is a means to assure the student and his parents that the quality of education being provided in a given institution meets the normal expectations for that level of education. In nearly all countries outside the United States accrediting (that is approval and recognition) is given by the central government. In the United States, the

main system of recognition is through regional accrediting bodies that are made up of, and completely controlled by, the institutions themselves. In this way a college is judged by its own peers.

For instance, Andrews University is located within the territory of what is called the North Central Association of Colleges and Secondary Schools. Its standards are voted by delegates from all of the schools at annual meetings. Inspection teams made up from professors or administrators of sister colleges and universities determine the quality of work being done by them.

Moreover, this system of accreditation is voluntary. A school does not have to be accredited to operate. However, young people who wish to obtain licenses to function in given professions usually are required to be graduates of accredited colleges or universities.

This system of accreditation is unique also in that an institution is judged not by a sort of norm of all institutions, but rather by how well it meets its own objectives. Some colleges or universities, such as Andrews University, may have goals and objectives unique to their own constituencies. American accrediting associations look at these goals as if they are worthy, then such an institution may be voted full accreditation and recognition of the program of education that it carries on to meet those goals.

Continued on Page 2.



Dr. Richard Hammill
A.U. President since 1963

The President of Andrews University

Dr. Richard Hammill has been president of Andrews University since 1963. During his tenure, all university programs have been accredited, enrollment has increased by 50% — from 1516 students to 2276 and the net physical plant investment has doubled from about \$9,500,000 to over 20,000,000.

Dr. Hammill started his career in 1936 as a minister in the state of Washington and went to the Far East in 1940 as a missionary. He was interned with his wife and son in a Japanese prison camp in the Philippine Islands during World War II. After the war, he was appointed a professor of religion at Southern Missionary College, Collegedale, Tennessee, and later served as academic dean there.

He received the Ph.D. degree from the University of Chicago in 1950, and was named an associate secretary of the department of education at Seventh-day Adventist world headquarters in Washington, D.C., in 1955. He was elected president of Andrews University in 1963.

Dr. Hammill was cited in 1969 by Michigan Governor William G. Milliken for leadership in attacking the problems of the disadvantaged in southwestern Michigan.

Dr. Hammill is the author of the "Judges" section of the Seventh-day Adventist Bible Commentary and of the book, *In Full Assurance* and was a contributor to the books, *Problems in Bible Translation and Doctrinal Discussion*. He has also written numerous magazine articles.

(Continued From Page 1)

The specialized function of Andrews University is to provide unique programs designed to train skilled workers for the worldwide activities of the Seventh-day Adventist church. The Board of Trustees statement of objectives specifies:

"The University serves as a training and research center for the worldwide activities of the Seventh-day Adventist church. It has as a primary concern the nurture and training of leaders for the church and its enterprises and for the vocations and professions which by their nature are service-centered."

These specialized functions of the university do not preclude its serving the general public. The Board of Trustees also desires that Andrews University "render service and guidance to society, locally, nationally, globally. The university community will ever remain cosmopolitan in outlook and composition."

Pluralism, variety, the concept of judging an institution by how well it meets its own objectives is indeed one of America's great heritages, and everything possible should be done to maintain such a heritage.

From a talk, "Andrews University in the American System of Higher Education" by Richard Hammill.

100-Year-Old Adventist University Operates in Black Last Twenty Years Without Government Help

At a time when many small private colleges are in serious financial difficulty, 100-year-old Andrews University, Berrien Springs, Michigan, is in its 20th year without a deficit.

The university has accepted no government aid towards its \$20,000,000 physical plant or its \$12,000,000 annual budget.

Despite rising costs, the school posted an enrollment increase of 7.5% this year, setting a record high of 2276 students in the College, School of Graduate Studies, and Theological Seminary.

Andrews University began in 1874 as Battle Creek (Mich.) College, the first institution of higher education founded by the Seventh-day Adventist church. The church itself was only 11 years old at the time, but its 5,000 members raised \$54,000 to build the college.

Latest figures show that the two-million-member denomination now supports the largest unified Protestant parochial school system in the world, with over 388,000 students enrolled in 4,500 schools.

Unique Among Michigan Colleges

Andrews University is observing its centennial landmark with a glance backward over the years since its founding in 1874 and with a long look at the future as it seeks to evaluate its philosophy and goals in education.

Philosophically, its education is built on an acknowledgement of a relationship of man to God as the Creator of the universe and of mankind. In this framework, Andrews University seeks to educate the whole man (body, mind, and spirit), a goal reflected in its official seal bearing the inscription: spiritus, mens, corpus.

Practically, the need for trained personnel in the denomination's work was the major factor in its establishment in 1874.



CENTENNIAL THEME

*Seeking Understanding of God's Creation
Developing Excellence in the Whole Man
Inspiring Commitment to God and Man*

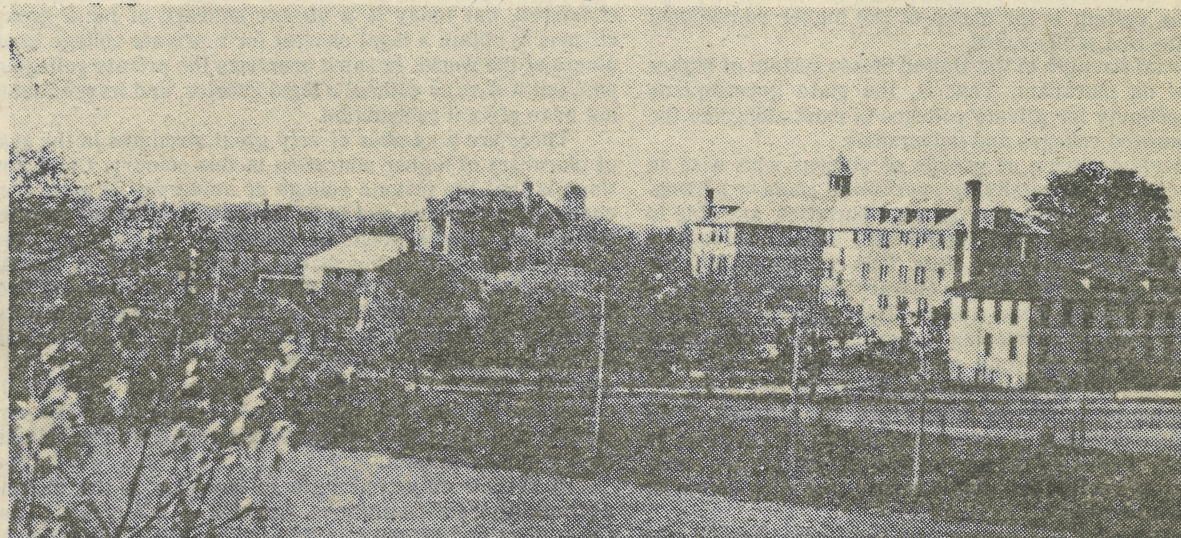
OBJECTIVES

To examine the university's heritage in order to stimulate spiritual commitment and intellectual growth (1) assist in charting the university's course for the future and (3) help interpret the purpose of the university to students, alumni, members of the Seventh-day Adventist church and the community.



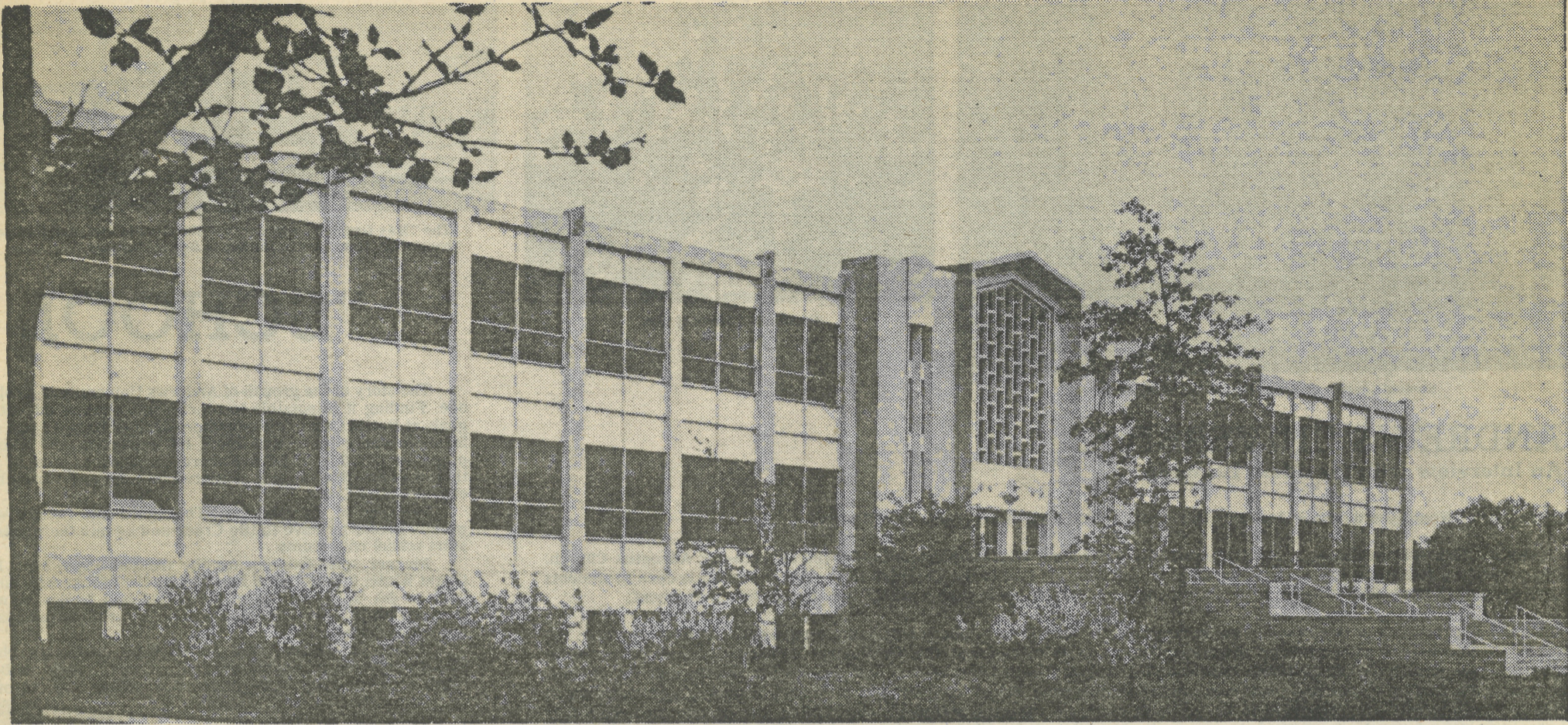
Andrews University Campus, 1974

comprises 1,321 acres along the St. Joseph River adjacent to U.S. Highway 31. The university has 33 buildings and equipment valued at \$20,175,000.



Andrews University Campus About 1920

A view of the Emmanuel Missionary College campus around 1920 shows, clockwise from left foreground, Green Hall, Heating, Press, Administration, Birch Hall, and North Hall. This view looks southwest across the campus.



The James White Library on the Andrews University Campus has 300,000 bound volumes, as well as 21,612 volumes on microfilm. The library subscribes to 2,650 periodicals, is a member of the Center for Research Libraries (CRL), and has a trial membership in the Associated Colleges of the Midwest Periodical Bank. It also houses a rare book collection and an archaeological museum.

Community Oriented Facilities and Programs

"Town and Gown" relationships are constantly expanding in the area, and university facilities are used frequently by the surrounding community.

James White Library

One such facility is the James White Library with its 300,000 bound volumes, as well as 21,612 volumes on microfiche. The library subscribes to 2,650 periodical subscriptions, and shelves many unbound journals, pamphlets, microfilms, and photostats. Just recently the library has joined the Center for Research Libraries (CRL) as an associate member, and through the CRL will now have access to over two and a half million volumes on an interlibrary loan basis. The CRL collection is highly specialized and is primarily a research rather than a current-interest collection. It includes books, specialty magazines, newspapers, doctoral dissertations, and government documents from many countries.

The A.U. library also has a trial membership in the Associated Colleges of the Midwest Periodical Bank (ACM), which makes available almost 2,000 periodical titles; and it has access to 50,000 additional titles through cooperating Chicago libraries.

The library is a designated Map Reference Library and as such receives all new and revised topographical maps of the U.S. Geological Survey.

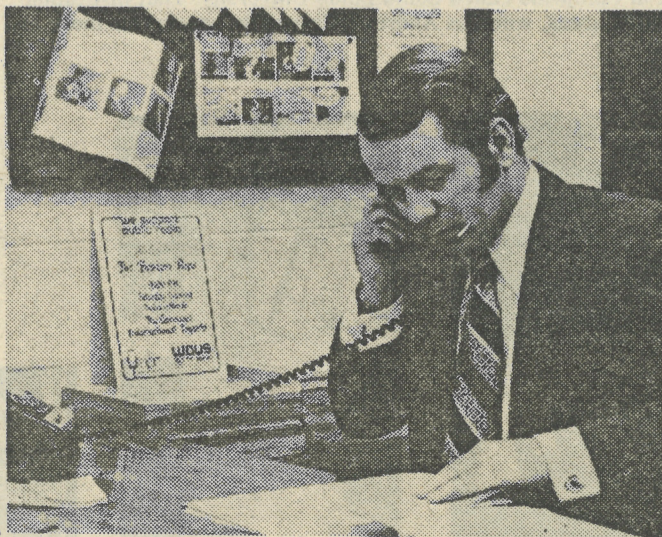
Printed catalogues of the national libraries of Britain, France, and East and West Germany, as well as the Library of Congress and the library of the Teacher's College at Columbia University, are available in the library's extensive bibliographical collection.

Housed also in the James White Library building are the Heritage Room of rare books and an archaeological museum with over 2,000 objects collected by gift and excavation.

Stereo FM Station

Benefiting the community also is a 17,000-watt stereo FM station at Andrews which broadcasts informational, fine arts, and religious programs to a four-state area.

A member of the National Public Radio (NPR), Andrews' WAUS broadcasts at 90.9 eighteen hours a day seven days a week. Businessmen from the area have helped to expand the program offerings through underwriting certain broadcasts, including weekly concerts of the Cleveland Symphony Orchestra, the Boston Pops, and the Philadelphia Orchestra.



William Young, director of WAUS, 17,000-watt FM Station at Andrews University

Health Services

A Medical Center with a staff of seven doctors is also available to the community.

At present, the Nursing Department at Andrews is scheduling a "Health Within Your Reach" series. At intervals during the year, a blood test evaluation to determine the risks of coronary, cancer, and CVA (stroke) will be available to area residents. The test includes testing for cholesterol, triglycerides, blood sugar, blood pressure, plus a medical history determination, consultation with a physician for those persons having high risk, and a report of any abnormal findings sent to a person's own personal physician. Cost to the individual for the entire health series, including blood test, follow-up report, and 20 hours of instructional programs is only a very small fee.

Four programs of five nights each will be held following each scheduled testing program. Included in the programs are "Nutritional Balance," "Ideal Weight and Physical Fitness," "Freedom from Stress without Chemical Crutches," and "Health and Happiness," the latter dealing with physiology. All programs include lectures and demonstrations.

Coordinating the program is Mrs. Charlotte Hamlin, who teaches classes on community health programs at Andrews. She is a registered nurse and holds a master of public health degree in nutrition and health education from Loma Linda (Calif.) University.



A language stimulation game, designed to help children with delayed speech and hearing problems, is played by Lynn Scott (right), speech pathologist at the A.U. Speech and Hearing Clinic, and Jimmy Moshier of Stevensville.

Speech and Hearing Clinic

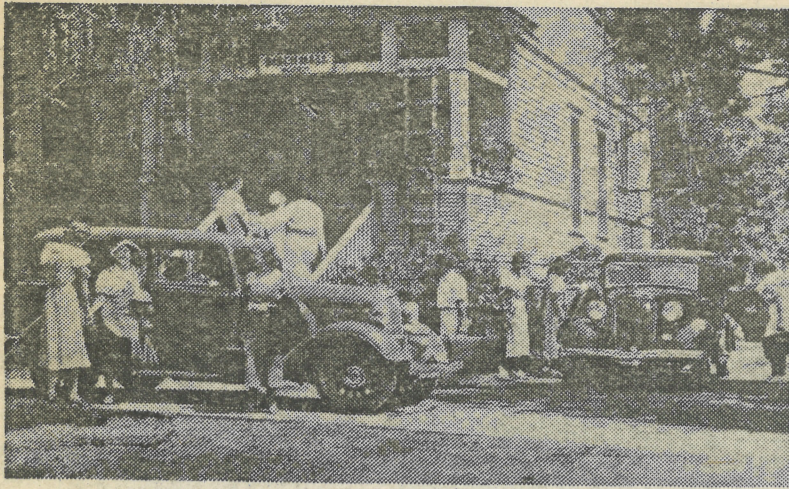
The Speech and Hearing Clinic at Andrews in its third year of operation is another ongoing service used by the community.

Services are available to persons having disorders of voice and articulation, children with delayed language, adults with language disorders, stroke victims, and also those who have learned English as a second language. Diagnostic testing locates hearing problems, and hearing-aid evaluation services and therapy are also offered.

The clinic is authorized by the Crippled Children's Service and is served by two speech pathologists. Before the establishment of the facility at A.U. in the fall of 1971, the nearest clinic was at Kalamazoo.

Referrals are given to the clinic by the Public Health Department, Berrien County school systems, and private physicians. Parents and other individuals may also make appointments.

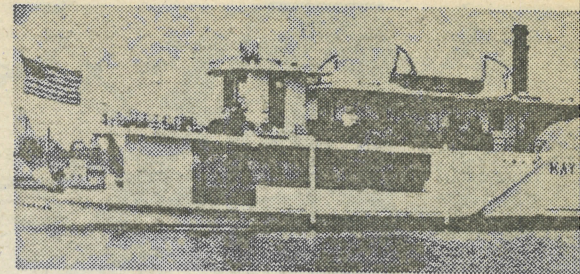
Besides treating speech and hearing disorders, the clinic also trains future speech and hearing clinicians. During the school year, as many as 20 students receive opportunity to gain practical experience through observing and assisting clinicians at the clinic.



Students arrive at Birch Hall in the early 20's.



Graduating Class of 1898.



The "May Graham" was queen of the river in 1895, and excursions from Benton Harbor to Berrien Springs.

ANDREWS UNIVERSITY: An Interview with President Hammill

QUESTION: Would you describe Andrews University? What kind of programs does it offer?

ANSWER: Andrews University is a private institution of higher education sponsored by the Seventh-day Adventist Church. The orientation in campus life and in philosophy of instruction is that of the Christian faith. The university is open to students of all religious persuasions or none, if they are willing to carry on their studies within this particular environment.

The university consists of five schools: the undergraduate, liberal arts College with some vocational programs attached; the School of Graduate Studies offering graduate degrees in 15 disciplines; the Theological Seminary for the education of ministers; the Center for Occupational Education that specializes in job readiness and preparation and the mastery of skills necessary for certain trades and vocations; and the Laboratory School consisting of preschool through grade 12, in which college students who are preparing to be teachers can gain experience through observation and practice teaching. The Laboratory School enrolls about 450 elementary school pupils and about 300 secondary students. The College enrolls about 1500 students on the baccalaureate level; the School of Graduate Studies, about 315; and the Theological Seminary, about 285. The Center for Occupational Education enrolls approximately 85 students.

In the College, degrees are offered in 23 departments typical of most liberal arts colleges. The School of Graduate Studies offers the master of business administration degree, the master of music degree, the master of arts degree in 8 areas, and the master of arts in teaching degree in 13 areas. A doctor of education program begins in the summer of 1974. The Theological Seminary offers the degree expected for ministers in America, the master of divinity degree. It also offers a doctor of ministry degree, which is advanced training for pastors, and the doctor of theology degree for the training of religion teachers on the college or university level.

The teaching faculty numbers 179. Of this number, 91 have earned doctorates. The faculty-student ratio in the university is about 1:13.

Andrews University is fully accredited by the North Central Association of Colleges and Secondary Schools. It also has specialized accreditation in certain areas such as music, social work education, nursing, and teacher education. The Theological Seminary is also accredited by the American Association of Theological Schools.

QUESTION: Your university is affiliated with the Seventh-day Adventist Church. Will you give us some background on the denomination?

ANSWER: The Seventh-day Adventists are a Protestant denomination. We are somewhat different, however, from the other Protestant churches, although not so much as some persons think. For instance, our basic doctrinal beliefs we hold in common with conservative Christians of all faiths.

We do have two unique doctrinal positions. First, we believe that Jesus, our Lord, worshipped on the seventh-day Sabbath and that His resurrection did not change God's requirement in that respect, and that our Lord expects Christians still to keep the Sabbath established by Him at creation as a memorial to His creative power.

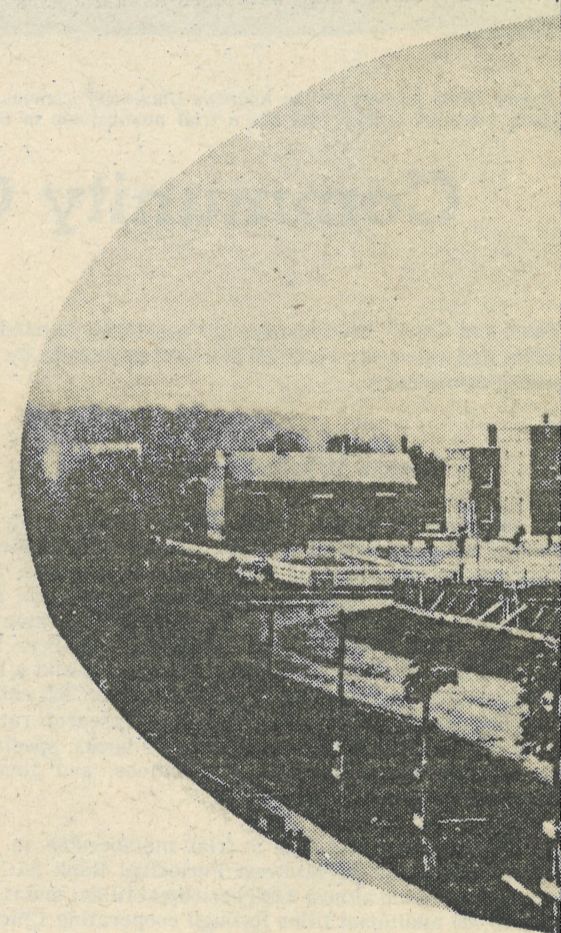
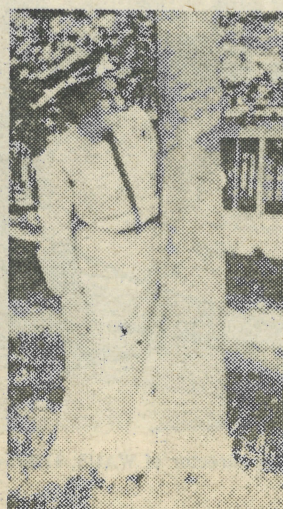
Second, Seventh-day Adventists believe the second coming of Jesus to be a literal return to set up the Kingdom of God on this earth, and believe also that we are living near the end of time when this transcendent event will take place.

Seventh-day Adventists are a missionary-minded people — evangelical and active. We try to fulfill the commission of our Lord to preach the gospel in all the world for a witness to all nations. To accomplish this, we conduct a far-flung, worldwide missionary enterprise of schools, missions, hospitals, and welfare work.

QUESTION: Does the Adventist church operate colleges and universities besides Andrews University?

ANSWER: Yes, Seventh-day Adventists have a number of educational institutions. In fact, in all the world we have an education system that includes 4500 schools, offering instruction from elementary through university level. It is probably the largest unified Protestant parochial school system in the world.

We have institutions of higher education in many countries. In the United States, we have eight undergraduate colleges and two universities — this one, Andrews University, and a second one in California called Loma Linda University. That institution has a liberal arts college as we do, but it specializes in health-related areas, whereas Andrews University specializes more in the liberal arts, humanities, and religion.



The old courthouse c... year while students... the newly acquired c...

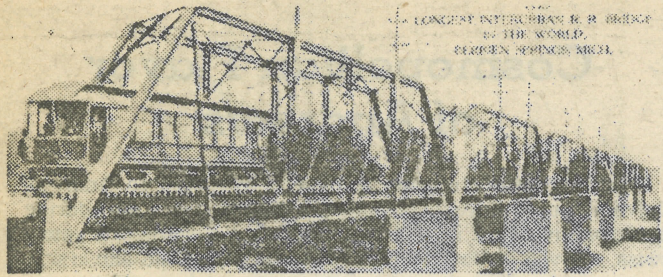
chapel, library, offices, and storage. Enrollment about 50 for the transplanted college, renamed Missionary College.

The daily program included chapel and class a.m. to noon; following dinner, students and faculty reported to the school's 272-acre property along the work either on the farm or on construction of buildings for the college.

The following summer, as three buildings near completion, the construction crews lived in tents pitched in an orchard. Student carpenters — semiskilled help at the time — had difficulties, especially in constructing the three-story arts building. When completed, it was 22 inches narrow at one end. But the building was sound and was used until 1920.

College Industries and Athletics

Manual trades were soon started — agriculture and wood products — and in the 1920's the college paid



LONGEST INTERURBAN R.R. BRIDGE
OF THE WORLD
BERRIEN SPRINGS, MICH.

Only the cement abutments remain of what was once the longest interurban bridge in the world. The bridge spanned the St. Joseph River, now Lake Chapin.

N A STUMP"

college at its start was its coeducational nature.

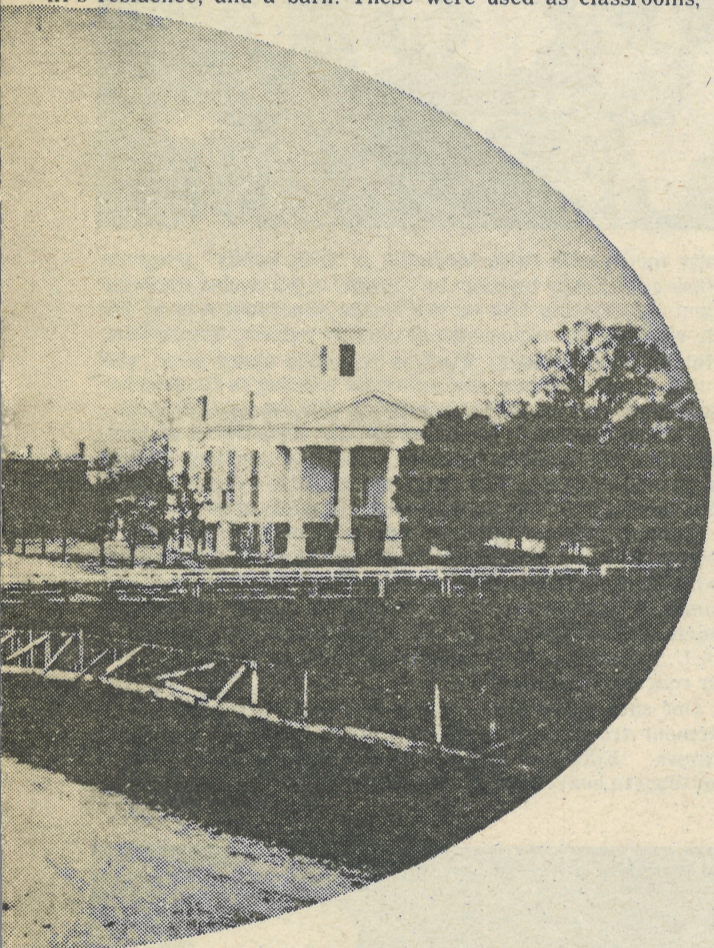
By 1893, the official enrollment of 716 students made Battle Creek College the largest church-related college in Michigan. But the campus had shrunk to only 7 acres, and the city of 20,000 persons hemmed it in on all sides.

A new administration in 1897, headed by 32-year-old President Edward Sutherland, set out to reform the college and move it to a more rural location.

Four years later, stockholders of the college voted unanimously to relocate, and Berrien Springs literally became a college town almost overnight when 16 freight-car loads of equipment were shipped there by the college and stored in every empty shed and barn.

Equipment, faculty, and students arrived in the summer of 1901 "all dressed up and (literally) no place to go."

For the 1901-02 school year, the college rented Berrien County's former courthouse (1839), office building, jail, sheriff's residence, and a barn. These were used as classrooms,



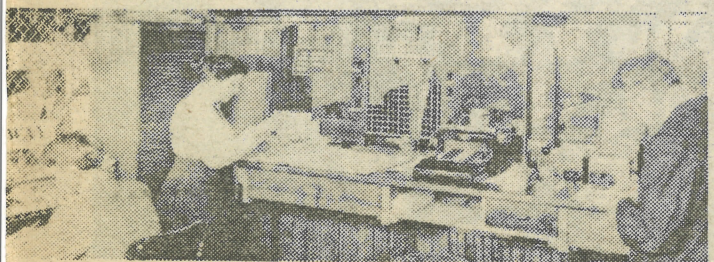
in Springs was rented for the 1901-02 school year. The afternoons constructing buildings on miles away.

approximately \$60,000 a year for labor. The industries, especially the woodshop, were credited by college administrators with keeping the school afloat during the Great Depression.

Industries, businesses, and service departments are still an important part of Andrews University. Over \$1,000,000 is now paid annually to the 1500 students who work part-time for the school.

Partly because of the elaborate work program, athletics were very limited in the early years of Emmanuel Missionary College. A gymnasium was not built until 1948. Today's recreational facilities include two gymnasiums, an Olympic-size pool, lighted flag-football field, softball diamonds, tennis courts, and a paved quarter-mile track.

Believing that intramural sports more adequately answer the needs of the entire student body, university officials have never sought to establish an intercollegiate athletics program.



This was "Downtown" at Berrien Springs when the college was first built.



The Oronoko Hotel, where A.U. students stayed during the 1901-02 school year, was floated down the river from Bertrand to Berrien Springs.

QUESTION: How does Andrews University differ from most universities?

ANSWER: At Andrews, we try to incorporate into all the academic disciplines the basic Christian philosophy of life: that man is a creature, but that God created him – created him for a purpose – and that man cannot see life whole unless he is educated to understand about God and the will of God for man. It is our feeling that every educated person should know how to relate himself to his Creator, as well as to other human beings.

QUESTION: How is Andrews University financially supported? Many small private colleges are in financial difficulty today. What is your financial situation?

ANSWER: By and large, Andrews University is in good financial condition. We have operated in the black every year for the last 20 years. We have not had a year in which we have had a deficit. We feel fortunate in that we have been able to obtain funds to provide adequate, up-to-date, modern laboratories and other learning materials for our students and teachers. We also have an excellent library, developing very rapidly to be one of the finest research libraries in this part of Michigan.

However, it has been definitely necessary for us in these past few years of inflation to watch our expenditures and to try to improve every operation so that it is as efficient and economical as possible.

Financially, Andrews University gets support from several sources. When we consider all our annual expenditures – both for operations and for capital development – tuition and other charges cover about 60 per cent of the actual cost of the students' education. Tuition at Andrews is about the median for private schools in America, neither at the high end of the scale nor the low end.

We supplement income from tuition by several means. One of these is an annual alumni-giving campaign; each year our alumni increase their support.

We do not have an annual solicitation campaign for businesses in our area, but there are special friends who annually give us help. On occasion, when we have a major building program, we do ask and have received good support from our friends in the community.

One of our major sources of financial support is the annual subsidies given us by our supporting churches. These churches have been very liberal with us, and we have no complaints. We are very grateful for the fine way the Adventist churches have rallied to our financial needs.

However, as I have stated above, in common with other universities and private colleges, we are feeling a pinch and are using the best management techniques of which we are capable to trim expenses without reducing the educational quality of our program.

QUESTION: Does Andrews University receive financial help from the government?

ANSWER: No, we do not accept general financial aid from government sources. We do have an arrangement whereby our teachers may apply for government-supported research grants. We permit this because we feel such research gives service to the government in return for the specific financial help given for the research project. In a sense, the teacher is carrying on research to assist government in finding something it wants to know.

Also, we take grants that go directly to students under the programs of Economic Opportunity Grants, the Work-Study Grants, and the National Defense Student Loans. But as for general operating grants, or grants toward building facilities, our Board of Trustees wants to be sure we have complete independence of action. For this reason we have not sought government funds.

A New Name

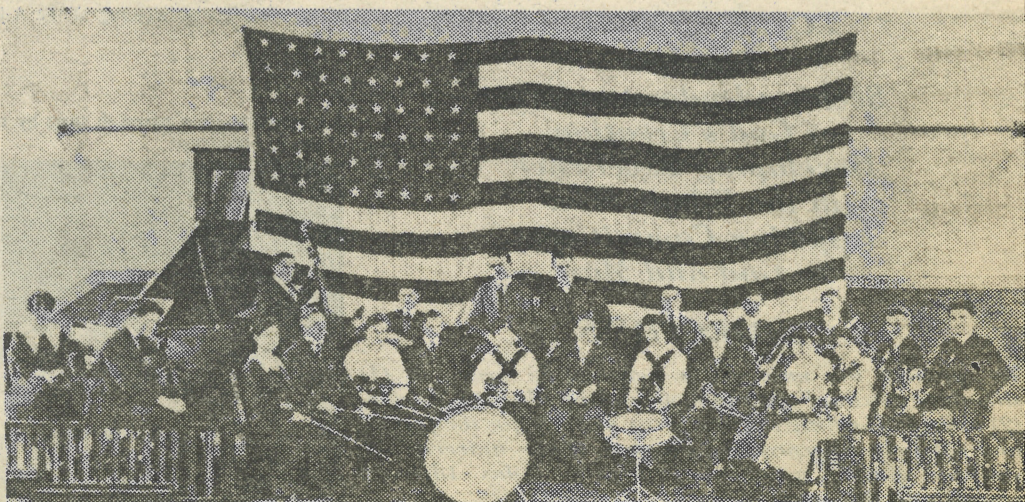
The school gained its present name, Andrews University, in 1960 when the Seventh-day Adventist Theological Seminary and School of Graduate Studies were moved from Washington, D.C., and joined to the college.

The name honors John Nevins Andrews, first Adventist missionary, sent from the U.S. to Switzerland in 1874, the same year the college was founded in Battle Creek.

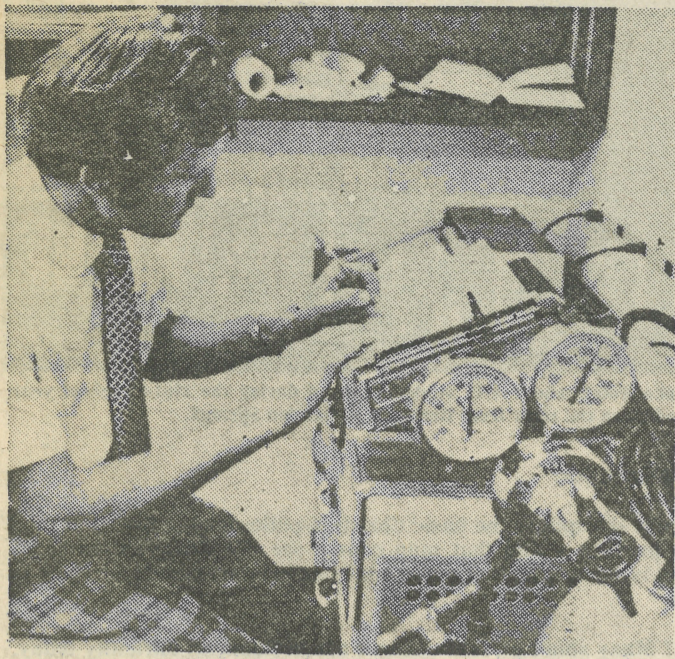
The present campus at Berrien Springs comprises 1,321 acres with 33 buildings, including residence halls and apartments with housing for 1,224 single students and 260 married couples.

Andrews University Development Plan for the 70's

Project	Cost
Library Addition	\$1,250,000
Laboratory School Addition	1,250,000
Fine Arts Center	3,000,000
Plant Services	300,000
Scholarship Endowment	650,000
Operating Endowment	650,000



Drug Identification Lab-



Lloyd Kuhn, chief analyst of the Berrien County Drug Identification Laboratory, uses the infrared absorbency test for identifying chemicals each of which has a "fingerprint" of its own.

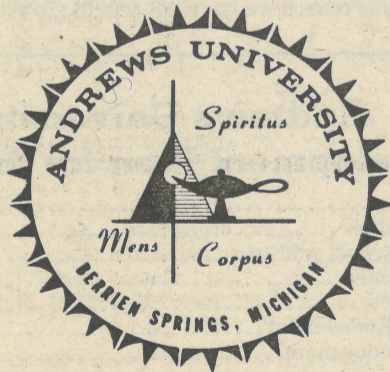
A Drug Identification Laboratory was established in January, 1972, on the A.U. campus as the first independent police laboratory in Michigan. It was a pilot project with an initial federal grant of \$29,300, set up primarily to assist law enforcement. It continued with more federal funds in 1973; and in September of 1973 the county agreed to assume operating costs for 1974.

Prior to the establishment of this laboratory, the Berrien County prosecuting attorney had to send all drug samples to the Michigan State Police Crime Laboratory or the Michigan Health Department Crime Laboratory, both in Lansing. The process was often slow and analysts from Lansing were not always available for court testimony when needed. Officers would spend much time transporting samples to Lansing, often to find the samples were not what was suspected. A single piece of evidence was costing the taxpayer \$350.

With the location of the laboratory in Berrien Springs, analysts are within 20 minutes of the court. In the first eight months of operation, they testified in about 200 cases representing about 6,000 miles of travel in comparison with 20,000 miles which the previous set-up would have necessitated.

The laboratory at the A.U. campus houses \$20,000 worth of the most modern drug analysis equipment. Chemical samples brought to the laboratory are given screening tests, ultraviolet absorbency tests, thin-layer chromatography, gas chromatography, and crystal tests. Two or three different confirmations are required on a given sample.

This laboratory, which is performing an ongoing service to the community, chief analyst Lloyd Kuhn predicts will, in the future, develop into a "full-fledged crime laboratory" to meet the increasing demands of law enforcement in Berrien, Van Buren, and Cass counties.



CENTENNIAL THEME

*Seeking Understanding
of God's Creation
Developing Excellence
in the Whole Man
Inspiring Commitment
to God and Man*

OBJECTIVES

To examine the university's heritage in order to (1) stimulate spiritual commitment and intellectual growth, (2) assist in charting the university's course for the future, and (3) help interpret the purpose of the university to students, alumni, members of the Seventh-day Adventist church and the community.

Food Services to Hospital

Latest community outreach from Andrews is a contract management agreement whereby Andrews University directs the operation of food services, at Berrien General Hospital, near Berrien Springs.

The university food services department and department of home economics will also provide a consulting service to the hospital dietary department in all aspects of food service business, including the areas of management, finance, purchasing, and medical dietetics.

Airport Facilities

Andrews makes available to the community the use of its airport which includes a lighted 3100-foot paved runway.

Andrews University Center For Occupational Education

Besides the degreed programs offered at Andrews, the university has a Center for Occupational Education with 85 students enrolled for the 1973-74 school year.

In operation since 1971, the center offers one-year, non-college credit programs (plus an internship of approximately nine months to one year) to students not interested in a regular four-year college program.

The Center offers 24 certificated programs in 16 areas: three in agriculture, one in auto mechanics, two in aviation, one in carpentry, one in clerical training, four in computer operation and programming, one in cosmetology, one in electrical training, one in masonry, one in occupational food preparation, one in plumbing, three in printing graphic communications, one in radiator repair, one in sign painting, one in upholstery, and one in welding. The programs are designed to train young persons to enter directly into employment after completion of the concentration of their choice.

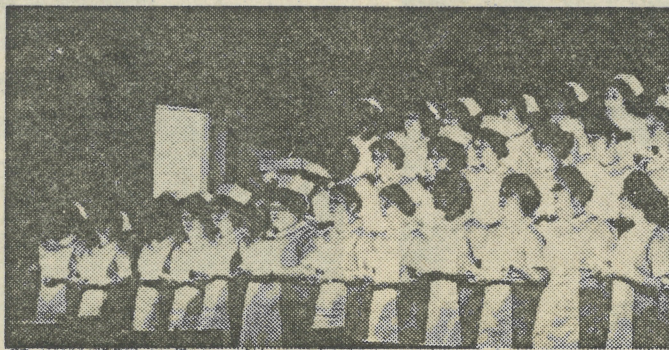
In addition to the concentration, occupational education students are required to take core courses in practical mathematics, reading improvement, communications, succeeding in the world of work, Christian witnessing, and introduction to business.

The Center uses many of the educational facilities on campus in addition to A.U.'s private airport which includes an all-weather runway, maintenance hangar, classroom and training facilities.



A student learns welding at the A.U. Center for Occupational Education.

A consecration hymn is sung by members of the A.U. baccalaureate nursing program.



Cosmopolitan Flavor of Andrews

International students have been attracted to Andrews University ever since its inception in 1874. In fact, it was during the formative days in 1872 that Ademar Vuilleimier, a young Swiss, arrived in Battle Creek, original site of the university as a prospective student. Over the years Andrews University has developed into a cosmopolitan campus ranking in percentage of international students enrolled as one of the highest in the United States. It currently hosts students from 65 countries. Of its current enrollment of 2276 students, 367 have come from overseas.

Nor is the international flavor confined to the students. One third of the 179 teaching faculty were born in other countries than the U.S. or have non-U.S. citizenship. Andrews University values the cultural exchange and enrichment made possible by the wide range of cultures represented on campus.

University administration makes special efforts to help the international students adjust to a new way of life and benefit from their attendance at A.U. A reception for international students is held at the beginning of each year.



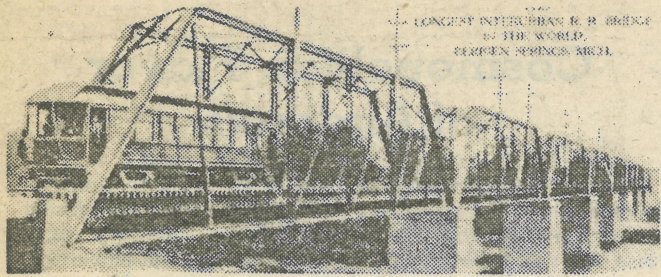
faculty meets with these students; a "host family" program enables community families to "adopt" a particular overseas student, introducing him or her to the American way of life while enjoying the experience of another culture. themselves. An International Student Week is set aside every year. Lectures, displays, films, and activities relating to the international scene. The Week is scheduled in 1974 for April 20 to 27.

Another service is promoted by the department of communication which offers a master of arts in teaching English as a second language. The department offers classes to overseas students, teaching conversational English at two levels.

Campus women's organizations take an active interest in overseas students, organizing shopping tours and other activities for them. A 22-member International Student Affairs committee actively voices the international point of view on campus. And community service organizations continually invite A.U. internationals to speak about their own countries and their reaction to life in the U.S.

One such group must have been flattered recently with a statement from a Philippino language teacher studying at Andrews: "Educated people in the Philippines say, 'You want to go to heaven, but I want to go by the way of Andrews.'"





LONGEST INTERURBAN R.R. BRIDGE
OF THE WORLD.
BERRIEN SPRINGS, MICH.

Only the cement abutments remain of what was once the longest interurban bridge in the world. The bridge spanned the St. Joseph River, now Lake Chapin.

N A STUMP"

college at its start was its coeducational nature.

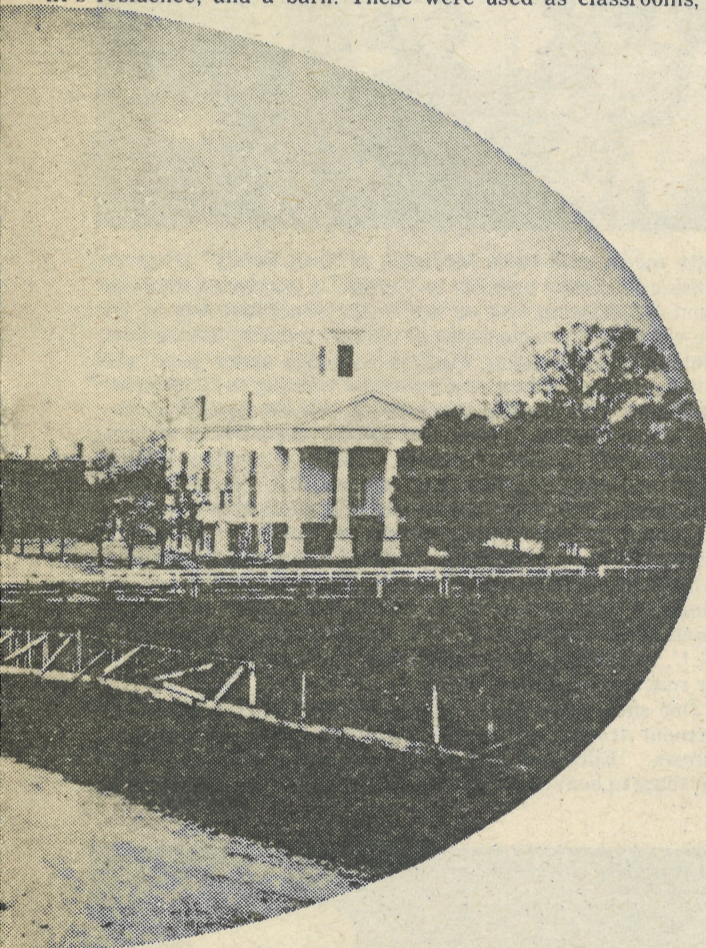
By 1893, the official enrollment of 716 students made Battle Creek College the largest church-related college in Michigan. But the campus had shrunk to only 7 acres, and the city of 20,000 persons hemmed it in on all sides.

A new administration in 1897, headed by 32-year-old President Edward Sutherland, set out to reform the college and move it to a more rural location.

Four years later, stockholders of the college voted unanimously to relocate, and Berrien Springs literally became a college town almost overnight when 16 freight-car loads of equipment were shipped there by the college and stored in every empty shed and barn.

Equipment, faculty, and students arrived in the summer of 1901 "all dressed up and (literally) no place to go."

For the 1901-02 school year, the college rented Berrien County's former courthouse (1839), office building, jail, sheriff's residence, and a barn. These were used as classrooms,



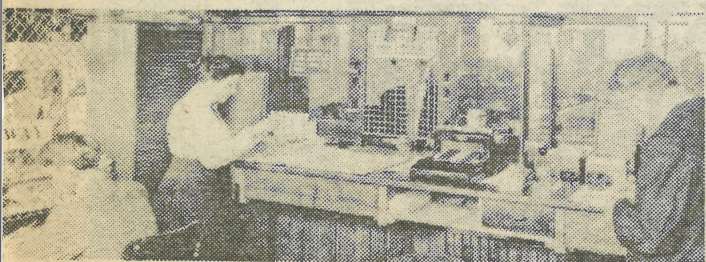
in Springs was rented for the 1901-02 school year. The courthouses and barns were used for the afternoons constructing buildings on miles away.

approximately \$60,000 a year for labor. The industries, especially the woodshop, were credited by college administrators with keeping the school afloat during the Great Depression.

Industries, businesses, and service departments are still an important part of Andrews University. Over \$1,000,000 is now paid annually to the 1500 students who work part-time for the school.

Partly because of the elaborate work program, athletics were very limited in the early years of Emmanuel Missionary College. A gymnasium was not built until 1948. Today's recreational facilities include two gymnasiums, an Olympic-size pool, lighted flag-football field, softball diamonds, tennis courts, and a paved quarter-mile track.

Believing that intramural sports more adequately answer the needs of the entire student body, university officials have never sought to establish an intercollegiate athletics program.



This was "Downtown" at Berrien Springs when the college was first built.



The Oronoko Hotel, where A.U. students stayed during the 1901-02 school year. The hotel was floated down the river from Bertrand to Berrien Springs.

QUESTION: How does Andrews University differ from most universities?

ANSWER: At Andrews, we try to incorporate into all the academic disciplines the basic Christian philosophy of life: that man is a creature, but that God created him – created him for a purpose – and that man cannot see life whole unless he is educated to understand about God and the will of God for man. It is our feeling that every educated person should know how to relate himself to his Creator, as well as to other human beings.

QUESTION: How is Andrews University financially supported? Many small private colleges are in financial difficulty today. What is your financial situation?

ANSWER: By and large, Andrews University is in good financial condition. We have operated in the black every year for the last 20 years. We have not had a year in which we have had a deficit. We feel fortunate in that we have been able to obtain funds to provide adequate, up-to-date, modern laboratories and other learning materials for our students and teachers. We also have an excellent library, developing very rapidly to be one of the finest research libraries in this part of Michigan.

However, it has been definitely necessary for us in these past few years of inflation to watch our expenditures and to try to improve every operation so that it is as efficient and economical as possible.

Financially, Andrews University gets support from several sources. When we consider all our annual expenditures – both for operations and for capital development – tuition and other charges cover about 60 per cent of the actual cost of the students' education. Tuition at Andrews is about the median for private schools in America, neither at the high end of the scale nor the low end.

We supplement income from tuition by several means. One of these is an annual alumni-giving campaign; each year our alumni increase their support.

We do not have an annual solicitation campaign for businesses in our area, but there are special friends who annually give us help. On occasion, when we have a major building program, we do ask and have received good support from our friends in the community.

One of our major sources of financial support is the annual subsidies given us by our supporting churches. These churches have been very liberal with us, and we have no complaints. We are very grateful for the fine way the Adventist churches have rallied to our financial needs.

However, as I have stated above, in common with other universities and private colleges, we are feeling a pinch and are using the best management techniques of which we are capable to trim expenses without reducing the educational quality of our program.

QUESTION: Does Andrews University receive financial help from the government?

ANSWER: No, we do not accept general financial aid from government sources. We do have an arrangement whereby our teachers may apply for government-supported research grants. We permit this because we feel such research gives service to the government in return for the specific financial help given for the research project. In a sense, the teacher is carrying on research to assist government in finding something it wants to know.

Also, we take grants that go directly to students under the programs of Economic Opportunity Grants, the Work-Study Grants, and the National Defense Student Loans. But as for general operating grants, or grants toward building facilities, our Board of Trustees wants to be sure we have complete independence of action. For this reason we have not sought government funds.

A New Name

The school gained its present name, Andrews University, in 1960 when the Seventh-day Adventist Theological Seminary and School of Graduate Studies were moved from Washington, D.C., and joined to the college.

The name honors John Nevins Andrews, first Adventist missionary, sent from the U.S. to Switzerland in 1874, the same year the college was founded in Battle Creek.

The present campus at Berrien Springs comprises 1,321 acres with 33 buildings, including residence halls and apartments with housing for 1,224 single students and 260 married couples.

Andrews University Development Plan for the 70's

Project	Cost
Library Addition	\$1,250,000
Laboratory School Addition	1,250,000
Fine Arts Center	3,000,000
Plant Services	300,000
Scholarship Endowment	650,000
Operating Endowment	650,000

