

JUN 10 '83

# FOCUS

The Andrews University Magazine

ERIC JONES II  
ATLANTIC UNION COLLEGE  
80 LANCASTER, MA. 01561

The 1983 Report of Progress

## Report of Progress, Volume 19, Number 1

### Contents

From the President	2
Report 1977-1982	3
Financial Report	5
How You Can Give	6
Donors	6
Advancement	23

### Cover

Nethery Hall was originally built as an administration building during the presidency of Henry J. Klooster in 1941-42. Because of an increase of students in 1943, it was used almost immediately to house classes. It was named Jay J. Nethery Hall in 1966, when the current and third administration complex to be built on campus was completed. Nethery was president of the Lake Union Conference from 1937-46. The building has been used to accommodate classes for the College of Arts and Sciences and the School of Business.

Photograph by Jon Anderson.  
Effect achieved by 65-line High Contrast Steel Engraving.

### In This Issue

In order to keep you informed with the growth, development and progress of Andrews University, we are devoting this issue of FOCUS to the accomplishments of "A Higher Standard, Andrews University Capital Fund for the 1980s." This long-range plan was developed early in 1977 by a representative group of trustees, university officers, faculty, alumni and students. It was approved by the Board of Trustees on May 9, 1977. We are proud of what has been accomplished at Andrews since the plan was first put into effect in spite of the recession this country, and especially the Midwest, has experienced in recent years. From this report you will see the accomplishments we have achieved as well as the commitment and courage with which we face the future.

### Staff

Editor  
Associate Editor  
Mark Driskill  
Assistant Editor  
Ron Knott

### The University

President  
Joseph G. Smoot  
Vice President for Academic Administration  
Richard W. Schwarz  
Vice President for Development and Public Relations  
David H. Bauer  
Vice President and General Counsel  
Richard Huff  
Vice President for Financial Administration  
Vernon H. Siver  
Vice President for Student Affairs  
Reger C. Smith

### Alumni Association

Executive Director  
Ralph M. Coupland  
President  
Minerva E. Straman  
Vice President  
C. Willard Mauro  
Treasurer  
Donald L. Dyresen

### FOCUS

FOCUS is the quarterly journal of Andrews University, an institution owned and operated by the Seventh-day Adventist Church. Copyright © 1982 by Andrews University. Reproduction in whole or in part without permission is prohibited. Andrews University is committed to equal educational and employment opportunities for men and women, and does not discriminate on the basis of race, color, sex, national origin, or handicap among its students or employees or among applicants for admission, employment or housing.



Joseph G. Smoot

### From the President . . .

When I became president of Andrews University in 1976, we organized a long-range planning group to chart the development of the university through the 1980s. The theme "A Higher Standard, Andrews University Capital Fund for the 1980s," was chosen to challenge our constituency, alumni and friends. It urged them

to unite and, while building on the solid foundations of the past, embark on a new quest for greater excellence. This theme is not new. It was uniquely expressed by one of our founders, E. G. White, 109 years ago, who said that we should ". . . reach a higher standard of intellectual and moral culture than any other institution of the kind in our land."

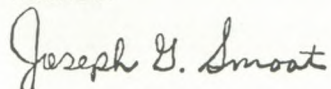
This has not been easy. We are experiencing a decade when most American universities are beset by one economic crisis after another, and when retrenchment rather than advancement seems to be the trend. At this point we have not attained everything we had hoped to achieve, yet we are proud of all we have accomplished. We face the future with continued confidence, believing it is only as we commit ourselves to the very best and are determined to be the very best that we will be able to achieve our goal.

It has been said that it is essential for institutions that will survive the present educational crisis to have 1) a sense of direction, 2) a uniqueness for existence, and 3) a special purpose and commitment to that purpose. Historically, Andrews University has always had a sense of direction, and as the university matures and its horizons widen, it reaches for greater distinction, building not only for the present but for the future. From its founding as Battle Creek College, its purpose for existence has been unique. For any university a paramount reason for existence must be the searching for and dispensing of knowledge. Broadening this, Andrews is committed to search for and experience a deeper understanding of faith and Christian values.

As we face the future with its shifting foundations in social, political, cultural and economic societies, we do it not in despair. Andrews University is committed to its special purpose of Christian distinctiveness. We strive for strength to cope with the present and offer hope for the future.

# Report of Progress

The following report presents a brief but comprehensive picture of what has been accomplished to date in the university's Higher Standards campaign. We are encouraged by what has been achieved. We also recognize there is still much to do for Andrews to reach the destiny which its founders envisioned. The decade ahead may not be an easy one for Andrews University; however we look to the future challenges with confidence.



Joseph G. Smoot  
President

## REPORT 1977-1982

The challenge higher education faces today is to retrench on one hand and keep its vision and dream for the future on the other. In times of economic crisis, survival depends on the ability to formulate realistic long-range plans and to adapt, as necessary, to reach those objectives. At Andrews University we do not identify with Alexander Pope's phrase, "Blessed is he who expects nothing, for he shall never be disappointed." Rather, we expect much, and we too shall not be disappointed.

Since 1977 Andrews has been engaged in "A Higher Standard, Andrews University Capital Fund for the 1980s," a campaign to achieve an ever-higher standard of excellence. The following is a comprehensive report of what has been accomplished during the past six years.

### FACILITY DEVELOPMENT

#### College of Technology

The College of Technology, the fastest growing division of the university, lacks an identifying presence on the campus. Currently, architectural plans are being drawn for a 36,000 square foot facility which will house the administrative offices of the College of Technology plus the departments of information and computer science and architecture.

#### Andrews Air Park

At Andrews Air Park an 18,600 square foot building was completed in which to locate the airframe and power-plant division of the College of Technology. The building includes classrooms, laboratories, storage and office space.

#### Bell Hall Renovation

The renovation of Bell Hall has given the department of education office and classroom space. This facility now houses the entire department of education, the largest department within the university.

#### Automotive Technology Center

The renovation of an 8,900 square foot facility on Highway 31-33 houses the expanding automotive tech-

nology programs in auto body and auto mechanics. This provides an adequate facility at a more visible location to the general public.

#### Andrews Academy

A 76,000 square foot facility to house Andrews Academy (grades 9 to 12) was completed in 1978. This division of the university provides quality education on the secondary level and serves as a teacher training and observation school for university students majoring in secondary education.

#### University Towers/Burman Hall

With the need of additional housing for single male students, University Towers/Burman Hall, a five-story residence hall, was constructed. Burman has 66,000 square feet of floor space with room for 192 students. The facility also includes an apartment for the dean of men and an auditorium with a seating capacity of 400.

#### University Manor Apartments

A gift/purchase enabled the university to acquire 102 apartments to provide needed housing for married students. The apartments include efficiency, one- and two-bedroom units.

#### Three-Building Commercial Development

The completion of a three-building office complex on Highway 31-33 was designed as income-producing property. Located in the three facilities are Heritage Bank, University Printers' offices and University Medical Center.

#### Acquisition of Industrial Building

The university has acquired a 42,000 square foot industrial building in Berrien Springs from United Technologies (formerly Essex). Plans are to locate and operate new commercial industries for student employment at this location.

#### Energy Management System

A computerized energy management system has been installed to monitor and control the heating and cooling of campus buildings thus optimizing energy consumption and saving an estimated \$45,000 annually.

#### Electrical Distribution System

A new electrical distribution sub-station has been installed to provide additional electrical capacity for the campus.

#### University Retirement Center

Timber Ridge Manor, an 83-unit two-story complex comprised of one- and two-bedroom apartments was constructed. The retirement center will not only offer housing for the elderly and handicapped, but also provide experience and training to university students in selected academic disciplines.

#### Renovation of Siegfried H. Horn Archaeological Museum

The Siegfried H. Horn Archaeological Museum, one of

the most visited spots on the campus, has been relocated to its own building. This will provide a more adequate display area for the university's historical and archaeological artifacts from the ancient Middle East.

#### **Acquisition of the Cum Laude Motel and Office Complex**

Through a gift/purchase arrangement Andrews has acquired the 22-unit Cum Laude Motel and office complex located near the university entrance.

#### **Voluntary Support**

Since the beginning of the Higher Standards Capital Fund campaign, Andrews University has received more than \$28,000,000 in voluntary support from organizations, corporations, foundations and friends. This funding has been applied to university operation, construction and renovation of facilities, purchase of equipment and the increase of operating and scholarship endowments. On page 6 there are numerous ways listed for persons who wish to add their support to Andrews University.

### **ACADEMIC PROGRESS**

The central purpose of a university is to educate people for life. The heart of education is in a university's academic programs, to ensure that its students understand their culture and history; speak, write and read well; appreciate art and music; solve problems in math and science; develop a sense of values; see the relationship between career development and employment opportunity; and perhaps most importantly, acquire a taste for continuing their education for the rest of their lives.

Since 1977 Andrews has made the following strides academically.

#### **Doctor of Philosophy Degree Program**

Andrews has offered doctoral degree programs in education for 10 years. In 1982 the university was given approval by the North Central Association of Colleges and Schools to confer the doctor of philosophy degree in the fields of education and religion.

#### **College of Technology**

The College of Technology, organized in 1974, has had a 71 percent enrollment increase during the past six years and presently enrolls 401 students. It currently offers 39 degree options and areas of concentration.

#### **School of Business**

In 1980 the School of Business was organized and currently offers degree programs through the master of business administration. Concentrations are available in management, marketing, economics, accounting and information science. Current enrollment in the school is 258.

#### **School of Education**

Plans are currently being studied to reorganize the present department of education into a School of Education. This would be the sixth school of Andrews' academic organization.

#### **Overseas Affiliations**

The scope of Andrews University extends far beyond the main campus. Affiliations have been established with colleges and universities in England, Australia, Jamaica, Mexico, Puerto Rico, Kenya, Nigeria and South Africa.

#### **New Academic Programs**

With increasing employment opportunities in the fields of technology and allied health, Andrews University has developed new departments in the areas of computer science and architecture, as well as new master's programs in nursing administration, medical technology and food systems management.

#### **Institute of Archaeology**

In 1980 an Institute of Archaeology was established to coordinate and accelerate the university's archaeological programs and activities. The institute correlates degree offerings related to the study of archaeology, provides field and laboratory experience, facilitates the work of the Siegfried H. Horn Archaeological Museum, assembles collections of archaeological materials and artifacts and publishes research results.

#### **Institute of Law**

This organization was established to foster dialogue and understanding between legal experts and educators, physicians and other professionals. It does this through seminars, law review courses, legal research and publications.

#### **Institute of Church Ministry**

Organized in 1979, the Institute of Church Ministry is a branch of the Seventh-day Adventist Theological Seminary. It seeks to put the personnel, media and data-processing resources of the university to the service of the denomination. It provides resources for the continued growth and development of the Adventist ministry, such as conducting surveys and research studies, assembling resource materials, compiling demographic profiles of cities, conducting continuing education classes and preparing curricular materials.

Andrews University faces the future with the challenge to continue its special and historic mission in the context of an institution of high quality. We are engaged in preparing students for leadership roles in business, the professions and service careers and to become productive and responsible citizens in their communities and the world. We seek not merely to develop men and women of competence. We want and expect our graduates to also be persons of conscience, faith and commitment.

# Financial Report for 1982

From the Vice President for Financial Administration

By Vernon H. Siver

Education costs money, but it is a worthwhile investment. During the past year Andrews University continued to operate effectively and maintain the centralized business operations in a manner most appropriate for gaining optimum utilization of the financial resources available.

In spite of cost curtailment programs to offset adverse economic conditions, Andrews compares favorably in all areas with guidelines available to higher education. This indicates an effective distribution of available funds to the various categories of expense.

It is the goal of this university to maintain a strong program to meet the needs of students. The combined efforts of trustees, administrative personnel, faculty, staff, parents, students and friends are aimed at preserving the quality of education and life that is traditional at Andrews University.

The sources and use of funds received in educational areas and the general operation of the university are shown below.

## Source of educational and general income 1981-82:

Student Fees	\$13,022,659	72.9%
Grants and Contracts	3,782,365	21.2
Other Sources	1,055,263	5.9
Total	\$17,860,287	100.0%

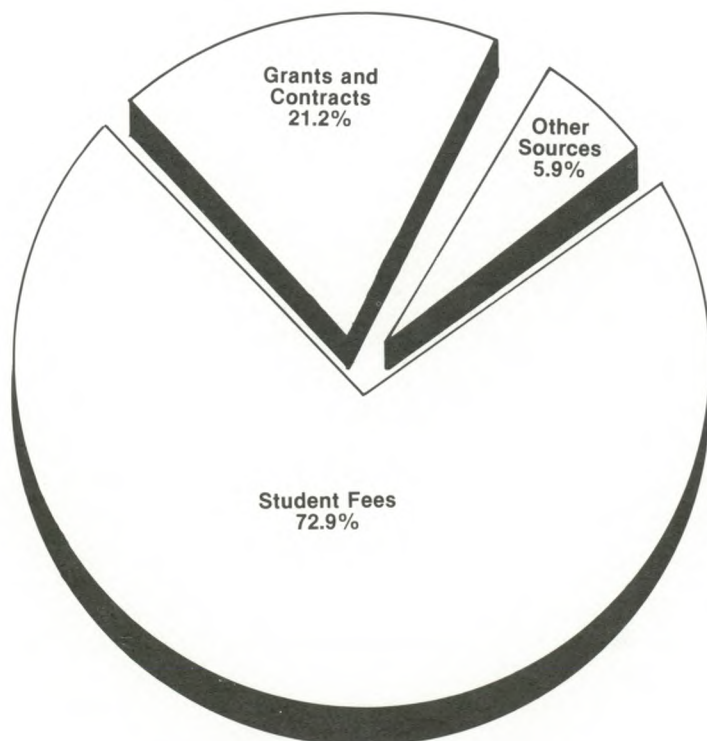
## Uses of educational and general income 1981-82:

Instruction	\$ 8,240,937	46.0%
Research	116,466	.7
Public Service	321,535	1.8
Academic Support	2,050,778	11.5
Student Services	1,211,652	6.8
Institutional Support	3,040,182	17.0
Plant Operation	1,298,187	7.3
Scholarship Grants	959,941	5.4
Provision for Plant Replacement and Indebtedness	620,609	3.5
Total	\$17,860,287	100.0%

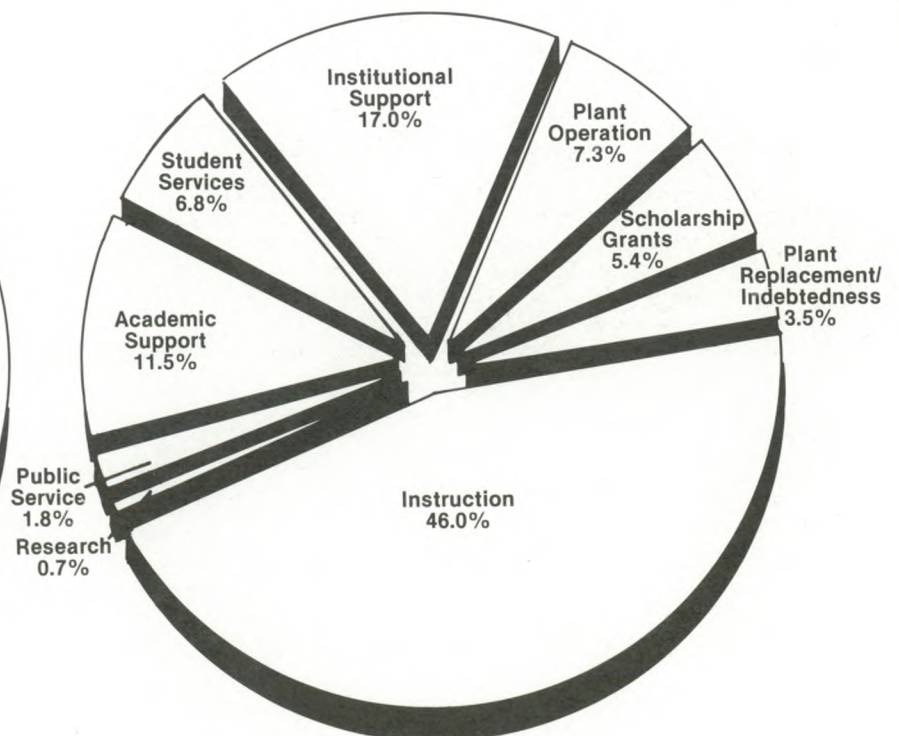
## Operating Funds: Educational and General

July 1, 1981 to June 30, 1982

Source of Funds



Use of Funds



# How You Can Give to Andrews University

The strength of a university can be measured in many ways. The caliber of its student body, the expertise of its faculty and the contributions it makes to society are usually considered in evaluating the worth of an educational institution. However, the most meaningful indicator is the continuous support by alumni and friends desiring to return value for value received.

The Andrews University Annual Giving Program is the very heart of the broad program of gift support which is essential to all private, higher education. The student aid program as well as the upgrading of the current instructional program and facilities are just some of the many vital needs supplied by the combining of thoughtful gifts from alumni, corporations, foundations, trustees, faculty, staff, church organizations and friends.

Andrews University has developed a diversity of plans for persons who wish to contribute to the university and thus invest in the principles for which Andrews University stands and to which it is committed.

One or more of these plans can help you join the large Andrews support family by making it possible for you to contribute in the best way for you and your particular circumstances.

**Reminder System** If you would like to contribute regularly to the university, perhaps the most convenient way is through the periodic reminder system. Simply determine the amount of your gift and select the date you wish to be notified of your commitment.

The university will send a remittance envelope. You may change the date of your reminder any time by alerting the office of development.

**Cash** Cash gifts may be tax-deductible up to 50 percent of your adjusted gross income. Such gifts may generate substantial tax savings for you, especially if you are in a higher income tax bracket.

**Matching Gifts** Many of the nation's major corporations use matching gifts as a means of contributing to higher education. If you are an employee of one of these companies, your gift may be matched, thereby doubling or tripling its value. Determine whether your company will match your gift by contacting the personnel office for a matching gift form to mail with it.

**Trusts** Two types of trusts are available: irrevocable and revocable. Benefits of irrevocable trusts are basically tax benefits for the present and the future. Or you may arrange with the university, your

lawyer or your bank to place some or all of your assets in a revocable living trust. The income can be reserved for life for you or your beneficiaries, with the remainder going to the university. Additional assets may be periodically deposited in the trust if desired.

**Bequests** You may make a gift of cash or property to the university through your will. These gifts are not subject to federal and state estate tax. Bequests that are unrestricted are most desirable because they make available funds for use where there is the greatest need. A bequest may also establish an endowment fund for unrestricted use or use consistent with your wishes.

**Insurance Plans** Gifts of life insurance may take several forms. You may name Andrews University the irrevocable beneficiary of your policy, an arrangement which permits a deduction equal to the cash surrender value of the policy and additional deductions for all premiums paid subsequently. You might choose to designate the university as contingent beneficiary. Policy proceeds are not subject to federal estate tax.

**Endowments and Memorial Gifts** You may create an endowment fund to memorialize an event, a loved one, an outstanding person in a particular field or anyone else you might desire. Scholarships, buildings or portions of buildings, equipment and lectureships are some items which make appropriate memorials. The office of development will be happy to supply more specific information about memorial endowment funds or other memorial gifts.

**Appreciated Property** Assets which have risen in value since acquisition make valuable gifts to the university. These are deductible at full current value and avoid the capital gains tax. Contact the development office for information on transferring the title to the university.

**Depreciated Property** For tax reasons, it may be advantageous for you to sell property which has depreciated in value. You may deduct the loss on your federal tax return, contribute the proceeds of the sale to the university and list this amount as a charitable gift.

**Donative Sale** You may wish to recover the cost of appreciated property and donate only the appreciation. If so, you may sell the property to the university for the original purchase price, contributing the excess as a gift. The appreciation is deductible and you pay capital gains tax, prorated, based on the portion you have retained.

**Gifts in Kind** You may contribute

such personal property as art objects, jewelry, antiques, paintings, books and other valuable property to Andrews University. A receipt is given for the gift. The fair market value of the gift may be deducted from your federal income tax return as a charitable gift. You are responsible for determining the fair market value. The property is removed from the estate and, therefore, is not subject to the federal estate tax.

The numerous ways of giving to Andrews are designed to meet the ever-increasing needs of the institution as well as the varying desires and circumstances of loyal supporters. Building construction, specialized equipment, supplies, books and other resource material, scholarships and a host of other needs demand your careful consideration as you decide how to contribute to the university.

You should consult with your own tax advisors in all tax matters. The university has on its staff experienced professionals to provide you and your advisors with personal assistance and up-to-date information on giving opportunities. For further information on ways you can assist Andrews and ways we can help you, please contact:

Office of Development  
Andrews University  
Berrien Springs, MI 49104

## Donors

(Note: Names are listed according to how they were received. Donations are for fiscal year July 1, 1981 to June 30, 1982.)

### Trustees, Faculty and Staff

The University trustees, faculty and staff not only give of their time and teaching expertise to strengthen the academic program and make Andrews a quality institution but they also contribute substantially to the university's Annual Giving Program.

W. D. Albrecht  
Irvin G. Althage  
Bernard Andersen  
Patricia Anderson  
Warren Ashworth  
Daniel A. Augsburg  
Samuele Bacchiocchi  
Robert L. Baker  
James Barclay  
Virgil Bartlett  
David H. Bauer  
Marilyn Bauer  
Richard Bayley  
Bert B. Beach  
Eloise A. Beardley  
C. Warren Becker  
Maria C. Belknap  
Jennette Bell  
Bill Belles  
Kurt M. Bender  
Elva M. Benner  
John Berecz  
Ernest Berlin  
Regina Bernet

Daniel R. Bidwell  
Stanley I. Bisel  
R. Kenneth Blanton  
Thomas Blincoe  
Michael Bogdanovich  
Jacqueline A. Boomsliter  
William F. Boomsliter  
Charles Bradford  
Joyce Bradford  
William Bradford  
Coral A. Brenneise  
Harvey Brenneise  
Wilma Brinley  
James Brower  
Douglas K. Brown  
Elsie L. Buck  
L. L. Butler  
Keith G. Calkins  
Sandra Camp  
James Campbell  
E. T. Carreno  
Kermit Carter  
Robert H. Carter  
Charles C. Case  
Mildred B. Case  
Audrey Castelbuono  
Anthony Castelbuono  
Fonda L. Chaffee  
Muriel Chapman  
James D. Chase  
William Chobotar  
Don Christman  
Garth Christoffel  
Charlyne A. Clark  
Neville Clouten  
Kenneth W. Cobb  
Arthur O. Coetzee  
Carl Coffman  
Virginia Coffman  
Betty Collier  
Sarah B. Conard  
Griselda Conkell  
Gregory C. Constantine  
Ellen M. Cooper  
Leon V. Copeland  
Renee L. Copeland  
Floyd Costerisan  
Ralph M. Coupland  
Judy M. Cowden  
Carol A. Crider  
Robert Cruise  
Patrice Cruise  
George H. Crumley  
Ruth V. Crumley  
Theresa Crumley  
Hilman W. Culp  
Desmond Cummings  
George W. Cummings  
Harvey A. Cunningham  
Janet F. Cunningham  
James E. Curry  
Chester H. Damron  
Mary Jean Damron  
Wilma Darby  
John E. David  
Jacquelyn M. Davidson  
William W. Davidson  
Delmer I. Davis  
Gregg A. Davis  
Louise Dederen  
Raoul Dederen  
Nila J. Degner  
Ernest P. Delaporte  
Harold O. Doering  
Irma Faye Doering  
Judith A. Dowell  
Lorraine Drew  
Mark Driskill  
Marilyn J. Dry  
Roger L. Dudley  
Cynthia Dukes  
Mercedes H. Dyer  
Dyre Dyresen  
Virginia Eakley  
Elly Economou

Reginold Eighme  
 Richard K. Ekkens  
 Joe Engelkemier  
 Peter D. Erhard  
 Floyd Eskridge  
 Robert C. Fadeley  
 Doris Ferris  
 Morna Y. Firth  
 Robert E. Firth  
 Arthur L. Follett  
 Dwain L. Ford  
 John Ford  
 Lawrence C. Ford  
 Lois Ann Freier  
 Barbara K. Friesen  
 Arlene I. Friestad  
 Rowena Fitcher  
 W. G. A. Fitcher  
 Leonard K. Gashugi  
 Anthony Gembrowski  
 Lawrence T. Geraty  
 Brian Gertz  
 G. Elaine Giddings  
 Thelma Gilbert  
 Farrell Gilliland  
 Barbara Girardin  
 Jean C. Graham  
 Roy E. Graham  
 A. Josef Greig  
 Albin H. Grohar  
 Irene Grohar  
 Maria Gullon  
 Betty B. Guthrie  
 Fritz Guy  
 Bethel E. Habenicht  
 Donna L. Habenicht  
 Herald A. Habenicht  
 Zerita Hagerman  
 Janet E. Hainey  
 Wilbur E. Hainey  
 Charles Hall  
 Paul E. Hamel

Walter Hamlin  
 Bonnie Jean Hannah  
 Donald L. Hanson  
 James D. Hanson  
 Esther Hare  
 L. N. Hare  
 Gerhard F. Hasel  
 Theodore R. Hatcher  
 Perry Haugen  
 James Hayward  
 John Hayward  
 D. M. Hechanova  
 Sandra Hehn  
 Harold E. Heidtke  
 Doris Helm  
 Martha Herbst  
 Henry Herzog  
 Beverly B. Hessel  
 William H. Hessel  
 Dorothy J. Hill  
 Georgina Hill  
 Kendall E. Hill  
 Leonard E. Hill  
 M. Louise Hill  
 Raymond C. Hill  
 Charles Hirsch  
 David E. Hodge  
 Jeannette Hodge  
 Hans-Jorgen Holman  
 Elwin D. Howell  
 Shahin Ilter  
 Robert S. Ingram  
 Welton Ingram  
 Thelma Jackson  
 Gary A. Jacobs  
 Hedwig Jemison  
 Ramira Jobe  
 Glenn E. Johnson  
 Herman J. Johnson  
 Ingrid Johnson  
 Ronald L. Johnson  
 Robert M. Johnston

Janell Jones  
 James R. Jordan  
 Ruth Kaiser  
 Clifton Keller  
 Rhoda M. Kendall  
 John C. Keppel  
 Robert Kingman  
 Jacqueline Kinsman  
 Dan A. Klein  
 Ronald Knott  
 Barbara J. Kriigel  
 David Kuebler  
 Lloyd Kuhn  
 Wolfgang P. Kunze  
 Arnold Kurtz  
 Oystein La Bianca  
 Charles Lacount  
 Harold H. Lang  
 Alice Lankford  
 Hans K. LaRondelle  
 B. E. Leach  
 Raymond M. Leadbetter  
 Bruce E. Lee  
 Frieda H. Lee  
 David L. Lewis  
 Norma L. Lippi  
 Anna Liske  
 Wilfred W. Liske  
 Norman Loewe  
 Martha K. Lorenz  
 Clarence Lowe  
 Marilyn M. Lowe  
 Robert Ludeman  
 Viola R. Lutz  
 Larry D. Mahlum  
 Alice G. Marsh  
 Betty S. Martin  
 Patricia Mauro  
 C. Mervyn Maxwell  
 Dean O. McDaniel  
 Ilea A. McDaniel  
 Ellsworth McKee

James D. McKee  
 Lawrence McNitt  
 Marion Merchant  
 Erie Mitchell  
 Evelyn W. Mitchell  
 Mary Jane Mitchell  
 Louise M. Moon  
 Robert D. Moon  
 Lillian Moore  
 Debbie Morgan  
 Don Morgan  
 Richard I. Morris  
 Evelyn Muffo  
 Paul Muffo  
 Ruth Murdoch  
 Donald W. Murray  
 P. Alethea Mustard  
 Elaine Mutale  
 Patricia B. Mutch  
 Donald M. Myers  
 Richard W. Myers  
 Roy C. Naden  
 James R. Nash  
 Michelle Nash  
 Rosalyn Nash  
 John Neumann  
 Lora Neumann  
 Ronald A. Neumann  
 Terrance A. Newmyer  
 Alan Norman  
 Monica M. Norman  
 D. David Nowack  
 Eduardo Ocampo  
 Merlene A. Ogden  
 Jessie A. Oliver  
 Lennart Olson  
 Gottfried Oosterwal  
 Richard T. Orrison  
 Sharon L. Orrison  
 Karen S. Oviatt  
 John R. Pangman  
 Lloyd Pelton

Norm Perry  
 Leroy Peterson  
 Carol Peterson  
 Sandra Peterson  
 Robert G. Pierson  
 Marguerite A. Pike  
 George Plue  
 Richard A. Postman  
 Richard K. Powell  
 David Rand  
 Charles P. Rasmussen  
 Kenneth E. Rasmussen  
 Bernice Ratter  
 Janet A. Razzouk  
 Mark B. Regazzi  
 Margaret Regester  
 Barbara Reinholtz  
 Laun Reinholtz  
 George Rice  
 Lavern Rice  
 William E. Richardson  
 Paul B. Riley  
 Richard M. Rittland  
 Aldyth Roberts  
 Ruth Roberts  
 Jeane Robinson  
 Martha J. Robinson  
 Robert J. Robinson  
 Bruce A. Ronk  
 Richard Rorabeck  
 Marguerite Ross  
 S. Clark Rowland  
 Edmond E. Roy  
 Norman J. Roy  
 Leona G. Running  
 Alan Rusk  
 Malcolm B. Russell  
 Slimen Saliba  
 Daniel Satonica  
 Charles Schlunt  
 Robert C. Schwab  
 Richard W. Schwarz

Richard Scott  
 William H. Shea  
 Penny Shell  
 Harry K. Show  
 Ruth Show  
 Everett L. Siewert  
 Bob W. Silver  
 Patricia M. Silver  
 Leatrice R. Siver  
 Vernon H. Siver  
 Reger C. Smith  
 Vaida M. Smith  
 Irma Jean Smoot  
 Joseph G. Smoot  
 Marley H. Soper  
 Stanley J. Sornberger  
 Richard C. Sowler  
 Russell Staples  
 Allen R. Steele  
 Edith O. Stone  
 John F. Stout  
 Minerva E. Straman  
 Kenneth A. Strand  
 E. A. Streeter  
 Howard G. Sturm  
 F. Lars Surdal  
 Lorraine Surdal  
 Raymond O. Swensen  
 Charles Taylor  
 Morris Taylor  
 Rilla Taylor  
 Abraham Terian  
 Jerome D. Thayer  
 R. A. Thompson  
 Asa C. Thoresen  
 Constance Tiffany  
 Eugene F. Toussaint  
 Charlene Trombetta  
 Alice D. Trubey  
 Norman L. Trubey  
 Lawrence Turner  
 R. Edward Turner



James Tweddell  
 Dale E. Twomley  
 Rebecca Twomley  
 Esther Tyler  
 Dale S. Tyrrell  
 Eleanor Umek  
 Edwin Vallieres  
 Mary Vallieres  
 Ronald B. Vallieres  
 Donald E. Van Duinen  
 J. C. Smuts van Rooyen  
 Max VanWickle  
 Wahneta Vanwickle  
 Charlene L. Vitrano  
 Steven Vitrano  
 G. Bruce Vogt  
 Werner K. Vyhmeister  
 Alice Wagner  
 John J. Wagner  
 Elaine Waller  
 Cedric C. Ward  
 Verlie Ward  
 S. Douglas Waterhouse  
 Kit Waits  
 Jonathan Wentworth  
 Donna Wheeler  
 David Wilber  
 Thomas Williams  
 Rhoda J. Wills  
 Carolyn Wilson  
 Gayle S. Wilson  
 James Wilson  
 Muriel Wilson  
 Neal C. Wilson  
 Oliver K. Wilson  
 Alfred Winn  
 Anita Winn  
 Lowell Witz  
 Peter Wong  
 Stephen W. Young  
 John Youngberg  
 Millie Youngberg  
 T. Corrine Zehm  
 William Zehm

### Fellows, Associates and Sponsors

A special group of contributors are the university's Fellows, Associates and Sponsors. Those designated as Fellows have made contributions totaling \$10,000 or more; Associates, an annual contribution of \$1,000 or more; and Sponsors, an annual contribution of \$500 or more.

#### Fellows

Mr. and Mrs. James Barclay  
 Donald J. Barr  
 Mr. and Mrs. David M. Bee  
 Dorothy Beltz  
 Mr. and Mrs. William Berecz, Jr.  
 Gertrude Bielski  
 Mr. and Mrs. George W. Brown  
 Mr. and Mrs. Allan R. Buller  
 Mr. and Mrs. Vern Carner  
 Mr. and Mrs. Chan Shun  
 Mr. and Mrs. Floyd L. Costerisan  
 Mr. and Mrs. Carroll N. Cross  
 Mr. and Mrs. Don Gruesbeck  
 Mr. and Mrs. Herald A. Habenicht  
 Mr. and Mrs. James L. Hagle  
 Neva M. Hall  
 Mr. and Mrs. Paul E. Hamel  
 Mr. and Mrs. Eugene W. Hildebrand  
 Mr. and Mrs. William Iles  
 Glee H. King  
 Mr. and Mrs. Lee F. Kramer  
 Mr. and Mrs. Percy S. Marsa  
 Mr. and Mrs. Norman McDougal  
 Mr. and Mrs. Ellsworth McKee  
 Mr. and Mrs. Frank E. Meelhuysen  
 Mr. and Mrs. Harold W. Moll  
 Mr. and Mrs. Norman G. Moll

Mr. and Mrs. William R. Nelson  
 Mildred Nishan  
 Mr. and Mrs. Bruce D. Oliver  
 Mr. and Mrs. Loyd C. Oliver  
 Mr. and Mrs. Charles D. Poole  
 Mr. and Mrs. Austin R. Sawvell  
 John F. Schadt  
 Mr. and Mrs. Richard G. Schell  
 Carl Steglich  
 Howard O. Stocker  
 Mr. and Mrs. Wilson L. Trickett  
 Mr. and Mrs. Gunnar Vetne  
 Mr. and Mrs. Clifford E. Vixie  
 Mr. and Mrs. Norman A. Wangard  
 Mr. and Mrs. C. E. Wittschiede  
 Dan Woolf

#### Associates

Mr. and Mrs. Harley Anderson  
 Mr. and Mrs. Roy Anderson  
 Mr. and Mrs. R. J. Berecz  
 Mr. and Mrs. Harvey Brizendine  
 Mr. and Mrs. Bruce Christensen  
 Mr. and Mrs. Michael Chucta  
 Mr. and Mrs. Raymond B. Crawford  
 John Daggett  
 Mr. and Mrs. Kenneth D. Dice  
 Mr. and Mrs. Edward K. Distler  
 Mr. and Mrs. G. L. Dybdahl  
 Mr. and Mrs. H. M. Egner  
 Mr. and Mrs. John R. Ford  
 Glenn D. Garbutt  
 Mr. and Mrs. Edward Graham  
 Hilda A. Habenicht  
 Mr. and Mrs. James Hageman  
 Mr. and Mrs. Carroll Jensen  
 Mr. and Mrs. Richard H. Koobs  
 Joseph W. Kramer  
 Mr. and Mrs. Wendell Marsh  
 Mr. and Mrs. L. R. McElmurry  
 Mr. and Mrs. Wesley E. McNeal  
 Leroy A. Miller  
 Mr. and Mrs. John D. Phillips  
 Mr. and Mrs. Herbert Rorabeck  
 Mr. and Mrs. Frank R. Schultz  
 Mr. and Mrs. James K. Skahen  
 Mr. and Mrs. Gordon D. Skeoch  
 Mr. and Mrs. John D. Snider  
 Mr. and Mrs. Andrew J. Snyder  
 Adelbert Stagg  
 Mr. and Mrs. S. Reid Tait  
 Mr. and Mrs. Clifford E. Vance  
 Mr. and Mrs. Charles Wang  
 Mr. and Mrs. Merle E. Wehner  
 Floyd Werrntz  
 Mr. and Mrs. Robert A. Wilkins, Sr.  
 Mr. and Mrs. George K. Wolfer  
 Glenn Wood  
 James C. Wyckoff  
 Mr. and Mrs. Don Yohe  
 Mr. and Mrs. Tom Zapara  
 Mr. and Mrs. P. J. Zondervan

#### Sponsors

Mr. and Mrs. Ralph Ahnberg  
 Mr. and Mrs. Charles L. Anderson  
 Ida C. Axelson  
 Ruth Kaune Baucom  
 Mr. and Mrs. David H. Bauer  
 Mr. and Mrs. Ralph Benedict  
 Mr. and Mrs. Kent Birmingham  
 Mr. and Mrs. Wilbur A. Bishop  
 Mr. and Mrs. Elmer E. Bottsford  
 Mr. and Mrs. Mark L. Bovee  
 Mr. and Mrs. Alfred E. Boyce  
 Mr. and Mrs. Stewart Brantley  
 Mr. and Mrs. Larry F. Brundage  
 Mr. and Mrs. Edwin F. Buck  
 Mr. and Mrs. Gordon L. Byrd  
 Mr. and Mrs. Ted Chamberlain  
 Mr. and Mrs. Robert G. Collard  
 Mr. and Mrs. Darel E. Courser  
 Donald G. Cox  
 Mr. and Mrs. Merwyn Crandell  
 Mr. and Mrs. Edwin R. Dass  
 Mr. and Mrs. Jeff Des Jardins

Mr. and Mrs. Daniel Ekkens  
 Mr. and Mrs. Daniel R. Erhard  
 Mr. and Mrs. O. Stewart Erhard  
 Elnora Evans  
 Mr. and Mrs. Rene Evard  
 Mr. and Mrs. Donald Fahrback  
 Geraldine Fair  
 Mr. and Mrs. Grover R. Fattic  
 Mr. and Mrs. R. Dale Fisher  
 Mr. and Mrs. Willard C. Fisher  
 Mr. and Mrs. Frank Foote  
 Mr. and Mrs. F. Wendell Ford  
 Mr. and Mrs. Jack Fritzsche  
 Mr. and Mrs. James Garber  
 Mr. and Mrs. V. E. Garber  
 Mildred Grandbois  
 Mr. and Mrs. Cornell Greavu  
 Mr. and Mrs. Norval E. Green  
 Mr. and Mrs. H. M. Grundset  
 Mr. and Mrs. Gordon P. Guild  
 Mr. and Mrs. Glenn Hahn  
 Mr. and Mrs. D. M. Hechanova, Jr.  
 Esther Hensel  
 Mr. and Mrs. Clair Howell  
 Mr. and Mrs. W. Leslie Iles  
 Mr. and Mrs. F. J. Inocencio  
 Mr. and Mrs. Robert B. Johnson  
 Mr. and Mrs. Andre V. Jubert  
 Mr. and Mrs. Joseph Kim  
 Mr. and Mrs. William E. Knecht  
 Richard M. Lainson  
 Mr. and Mrs. Frank LaTour  
 Mr. and Mrs. Daniel K. Li  
 Ernest Lloyd  
 Mr. and Mrs. Daniel Y. Loh  
 Mr. and Mrs. Charles R. MacIvor  
 Mr. and Mrs. Robert Marsh  
 Mr. and Mrs. Donald V. Mason  
 Mr. and Mrs. Raymond Mayor  
 Mr. and Mrs. Ernesto Medina  
 Mr. and Mrs. Gideon L. Medina  
 Mr. and Mrs. Arnold A. Michals  
 Mr. and Mrs. Martin Milas  
 Mr. and Mrs. Ennis N. Moore  
 Mr. and Mrs. Raymond Moore  
 Mr. and Mrs. Leon L. Murphy  
 Mr. and Mrs. Robert L. Myers  
 Mildred Nelson  
 Mr. and Mrs. John L. Nerness  
 F. Patience Noecker  
 Mr. and Mrs. Darrell Opicka  
 Edward E. Packard  
 David E. Papendick  
 Mr. and Mrs. R. W. Patterson  
 Mr. and Mrs. Harlow Peterson  
 Mr. and Mrs. Warren G. Popp  
 Mr. and Mrs. Clive Possinger  
 Mr. and Mrs. Glenn Purdham  
 Mr. and Mrs. Rodolfo Quion  
 Mr. and Mrs. Harold Racine  
 Mr. and Mrs. Jerry Radostis  
 Mr. and Mrs. Richard Rasmussen  
 Mr. and Mrs. John Roosenberg  
 Mrs. Bessie C. Rose  
 Mr. and Mrs. Ivan Ruger  
 Mr. and Mrs. Verlyn Ruger  
 Mr. and Mrs. R. A. Sabo  
 Mr. and Mrs. Marciano Santiago  
 Mr. and Mrs. Wayne Schaffer  
 Mr. and Mrs. Donald Schlager  
 Mr. and Mrs. John W. Schnepfer  
 Mr. and Mrs. Edward Sheldon  
 Mr. and Mrs. V. Lowell Sheline  
 Mr. and Mrs. Robert Shimek  
 Mr. and Mrs. Leon Slikkers  
 Mr. and Mrs. Joseph Smoot  
 Mr. and Mrs. Donald Snyder  
 Mr. and Mrs. V. W. Stuyvesant  
 Mr. and Mrs. Orval J. Swarn  
 Mr. and Mrs. Virgil Tackett  
 Mr. and Mrs. Budd Thomas  
 Mr. and Mrs. James A. Thomas  
 Mr. and Mrs. James Tsai  
 Mr. and Mrs. Wayne Vallieres  
 Mr. and Mrs. Roger Van Arsdell  
 Mr. and Mrs. Lope Vitangcol

Mr. and Mrs. Arthur Weaver  
 Mr. and Mrs. W. J. Wilkinson  
 Don L. Wilson  
 Mr. and Mrs. Albert D. Womack  
 Reuben L. Yaeger  
 Mr. and Mrs. Joseph Zweig

### Alumni

Listed below are the names of alumni who have contributed to their alma mater during 1981-82. Their gifts help Andrews University to provide quality education within a balanced budget and continue excellence in learning which has become synonymous with Andrews.

Philip R. Abbey  
 Humphrey Agbor  
 Harold Ahlers  
 Ralph Ahnberg  
 Paul Aka  
 Imogene A. Akers  
 Khalid Alabasi  
 Adekunle Alalade  
 Kenneth Albertsen  
 Marian Allen  
 Melville Allen  
 Teresa Allen  
 Irvin G. Althage  
 Gerrit Altink  
 Louise Ambs  
 Mabel M. Amen  
 Daniel Amich  
 Donald R. Ammon  
 Bernard Andersen  
 Melvin Andersen  
 Thomas Andersen  
 Bernhard Anderson  
 Carl Anderson  
 Carolyn Anderson  
 Craig L. Anderson  
 David W. Anderson  
 Harley Anderson  
 Paul W. Anderson  
 Roy Allan Anderson  
 Wilbur Andrews  
 Ivan M. Angell  
 Ernest Anger  
 Don Antisdal  
 Vera Antisdal  
 Gladys Appel  
 Pedro Arano  
 Wilton Archbold  
 W. C. Arnold  
 Ronald Arvidson  
 Donald Ashlock  
 Franklin Ashlock  
 J. Ashlock  
 Gunnar Asholm  
 Warren Ashworth  
 George S. Aso  
 Barbara Atherton  
 Bruce Atkins  
 C. Atteberry  
 Wilny Audain  
 Daniel A. Augsburg  
 Joyce Augsburg  
 Ida C. Axelson  
 Samuele Bacchiocchi  
 Joan Bacchus  
 David Bacino  
 Roberto Badenas  
 Charles L. Badger  
 Donald W. Baer  
 Phyllis F. Baillif  
 Sharon Baker  
 Robert W. Baldwin  
 Gordon Balharrie  
 Daniel Baltazar  
 William Baltazar  
 Edward Banks  
 Gale Baptist

Richard Baptist  
James Barclay  
Bob Barker  
Joyce Barnes  
Michael R. Barnes  
Owen Barnes  
Doyle Barnett  
Robert A. Barnhurst  
Alvin Bartlett  
Virgil Bartlett  
Brian Bates  
John Battenburg  
Joseph Battistone  
Ruth K. Baucom  
David H. Bauer  
Ken and Diana Bauer  
Marilyn Bauer  
Gary Beagles  
Shari Beamesderfer  
Duane I. Beardsley  
Eloise A. Beardsley  
Ronald J. Beardsley  
Fred M. Beavon  
Horace R. Beckner  
Vida Beckner  
Charles L. Beebe  
Sandra Beiffuss  
Rachel S. Belknap  
Gus Bell  
Marcia Bell  
Kurt M. Bender  
Ralph Benedict  
Brent Benfield  
Bayard Benfield  
Harry Bennett, Jr.  
Lester Bennett  
Betty Benson  
George N. Benson  
Esther Benton  
Roy Benton  
William B. Berecz, Jr.  
Carl I. Berg  
Orley M. Berg  
Janet Bermingham  
Jim Bermingham  
Kent Bermingham  
Lisa Bertoni  
Vera B. Bickett  
B. R. Bickley  
Daniel R. Bidwell  
Bert Bigford  
Franklin Biggs  
Mirian Bildner  
Brent A. Bills  
Stephen Biro  
Brenda Black  
Keith Blair  
Van O. Blair  
R. Kenneth Blanton  
Arthur F. Blinci  
Thomas Blincoe, Jr.  
Thomas Blincoe  
Todd Blosser  
Jack Blume  
Margaret Bohner  
Ramona Bond  
Eva M. Booth  
Walter Booth  
Donald Borg  
Brian Bothe  
Genevieve Bothe  
Elmer Bottsford  
Brenda Boughton  
Eric V. Boughton  
Naomi Boutell  
Mark L. Bovee  
Ethel R. Bowen  
Glenn Bowen  
Angela Bowman  
Dollis Bowman  
Jean Boyd  
R. K. Boyd  
Harold E. Boyer  
C. E. Bracebridge  
Evelyn Bradley  
Reynold C. Brandt

Stewart A. Brantley  
Jerome Bray  
Vija Bremanis  
Harvey Brenneise  
Coral A. Brenneise  
Ken Breyer  
John Bridges  
Harold Brinley  
Ray Brodersen  
Sandra F. Bromback  
Ted R. Bromback  
Judy Brooks  
James Brower  
Wesley E. Brown  
Frederick Brown  
Joseph Brown  
Martha Brown  
Patricia Brown  
Royce M. Brown  
Victor R. Brown  
Ellis V. Browning  
L. F. Brundage  
Roland Bruntz  
Aloma Bryan  
Steve Buastian  
Edwin Buck, Jr.  
Elsie L. Buck  
Iris Buck  
David Buckman  
Allen Buller  
Raleigh Burchfield  
Harold O. Burden  
Robert Burgess  
Fred Burghardt  
Natelkka Burrell  
Anthony Burrows  
Larry Burton  
Heidi Butchma  
Marjorie L. Butler  
Martin Butler  
Sari Butler  
Velma Butler  
Stafford Byers  
Glenn Bylisma  
Gordon L. Byrd  
Ford P. Cady  
Mark Cady  
Marion Caldwell-Jordon  
E. D. Calkins  
R. Callicott  
Sandra Camp  
Hugh J. Campbell  
W. J. Cannon  
Rachel Carley  
Steven Carlsen  
Alice Carlson  
John E. Carr  
Anita S. Carrington  
Le Roy Carter  
Ralph Carter  
Robert H. Carter  
Sylvester Case  
Kathryn Cash  
Robert W. Cash  
Marilyn Caskey  
Anthony Castelbuono  
Audrey Castelbuono  
Marilyn Castelbuono  
Roy Castelbuono  
Melisa Cerovski  
Daniel A. Chaij  
Kevin Chamberlain  
Stephen Chamberlain  
Paul C. Chapin  
Dorothy Charland  
Marsh Charles  
Devon Chartier  
Sheila Chartier  
James D. Chase  
Jess Chen  
Raliuaili Chhangte  
Sandra A. Chilson  
Paul Chomintra  
J. Branson Chrispens  
Daniel J. Christancho  
Alfred Christensen

Beulah Christensen  
Bruce Christensen  
Dorothy Christensen  
Helen Christenson  
Adelaide Christian  
Wesley T. Christiansen  
Joseph Christoffel  
Les Christoffel  
Michael Chucta  
Paul C. Cinquemani  
Irene Claflin  
Beill Clark  
Donald J. Clark  
Frank T. Clark  
Gary Clark  
Helen Clark  
Rodney Clark  
Zella Clark  
C. Fred Clarke  
Darcy Clarke  
Willton Clarke  
William Clayburn  
Bevin Clayton  
Clyde C. Cleveland  
Earl M. Clough  
Bjorn J. Clouten  
Harold Coats  
Janice Cobb  
Kenneth W. Cobb  
Authur O. Coetzee  
Harold G. Coffin  
Carl Coffman  
Jack L. Colclessor  
Donald Cole  
Leeroy Coleman  
David Collar  
Clarence Collier  
James Comrie  
Griselda Conkell  
Thomas Conkell  
James P. Conlon  
Gregory C. Constantine  
Gary Cornelius  
Duane Corwin  
Cary D. Costello  
Floyd Costerisan  
Raymond Cottrell  
Molierus Couperus  
Ralph M. Coupland  
Robert Cowdrick  
Wentzel Cowper  
Deborah Cox  
Lillian Cox  
Sharon Coyle  
E. H. Craig  
Sidney Crandall  
Raymond B. Crawford  
Gordon Creighton  
Daniel Cress  
Dorothy Cress  
Gely Cress  
Paul Cress  
Carol A. Crider  
Margaret A. Crishal  
Helen M. Crouse  
Robert Cruise  
Patrice Cruise  
Theresa Crumley  
Hilman W. Culp  
Desmond Cummings  
Helen Cupples  
Marian Curran  
Glenn Curry  
James E. Curry  
Charles J. Curtis  
Lula B. Curtis  
Mary Curtis  
T. Rose Curtis  
Dolly Cutchall  
Shirani D'Alwis  
Denise Dahl  
Sandra Dalley

Chester H. Damron  
Edward Dancek  
Rachel Dandan  
Sabeulah Daniel  
James M. Darby  
Yvonne Darby  
Marcelinne Dass  
John E. David  
Dorothy Davidson  
Jo Ann Davidson  
Edith Davis  
George Davis  
Gregg A. Davis  
Hudie Davis  
Jacinta Davis  
Johnnie Davis  
M. Jerry Davis  
Wilmer S. Davis  
Elayne A. Davidson  
Arthur L. Davy  
Ada Dayton  
Juan De Armas  
Gordon De Vries  
Thomas De Wind  
Harold Dean  
James Dean  
Richard Defluiter  
Valerie Defluiter  
Nila J. Degner  
Ernest P. Delaporte  
Shari Dell  
R. L. Delong  
Murray Deming  
John Dengler  
Kris Denton  
Karen Derringer  
Jeffrey C. Desjardins  
Lois E. Dewitt  
Adolph Diamond  
Kenneth D. Dice  
Robert F. Dillon



Tito Dinzey  
 Steven M. Divnick  
 Manuel Dizon  
 Stephen G. Dobias  
 Don L. Dockerty  
 Heidi Doering  
 Irma Faye Doering  
 Viola Doering  
 Cheryl Doneskey  
 Judy Doty  
 Michael Douglas  
 Judith A. Dowell  
 Nadine P. Dower  
 Richard Dower  
 Genevieve Drake  
 James Drake  
 Marcella M. Drake  
 Yolanda Drake  
 Sharolta Drechsler  
 Helen Drew  
 Lorraine Drew  
 Otto Drew  
 Debra Drewry  
 John Drummond  
 Eileen Dry  
 Margaret Dudley  
 Roger L. Dudley  
 David Duffie  
 Cynthia Dukes  
 Clarence Dunbein  
 Margaret Duncan  
 Vera Dunigan  
 D. Gregory Dunn  
 Gilbert Dunn  
 Kenneth E. Dunn  
 M. Scott Dunn  
 Mary Dupre  
 David Durham  
 Peter Duricsek  
 G. L. Dybdahl  
 E. L. Dybdahl  
 Donald Dyer  
 Fred Dyer  
 Mercedes H. Dyer  
 Elmer Dykeman  
 Dyre Dyresen  
 Virginia Eakley  
 Arvilla Ebert  
 Margaret L. Eckenroth  
 Elly Economou.  
 Keith Edgar  
 Miriam Edgerton  
 Maria Edsell  
 Bernard Edwards  
 Geraldine Edwards  
 Emily H. Egan  
 Daniel Ehrhardt  
 Daniel A. Ekkens  
 Louise S. Elliott  
 Edward M. Elmendorf, II  
 Kaye Elssmann  
 Kent Elssmann  
 Stephen Elssmann  
 Willene Emrick  
 Kenneth Engelbert  
 Joe Engelkemier  
 Sally Engle  
 Daniel R. Erhard  
 Warren Erhard  
 Ellen Ermshar  
 James Erwin  
 Carol Esh  
 Floyd Eskridge  
 Christian Evans  
 Gordon F. Evans  
 Helene Evans  
 Dwight Evard  
 Rene Evard  
 Sylvia Fagal  
 W. A. Fagal  
 Donald C. Fahrbach  
 Nanci Fahrbach  
 Prescott Fairchild  
 G. R. Fattic, Jr.  
 Evelyn M. Faurote  
 Martin Feldbush

Kaye Fenner  
 Arthur J. Ferch  
 Gladys Ferciot  
 Delores Ferree  
 Phillip D. Fetter  
 John E. Fetzer  
 Donald Finch  
 Darwin Finkbeiner  
 Halbert T. Finnell  
 Henry C. Fischeacher  
 Milton E. Fish  
 Diana Fishell  
 Martin Fishell  
 William Fisher  
 Charles Fitch  
 Sandra Fitzgerald  
 Wendy Fivash  
 Charles Fleming  
 Preston Fletcher  
 Philip Follett  
 Alyce Follette  
 Raymond O. Foody  
 Charles W. Foote  
 Francis L. Foote  
 Harold A. Foote  
 Ruth Foote  
 Laurita Forayth  
 Dwain Ford  
 F. Wendell Ford  
 John R. Ford  
 Jerry Fore  
 David Forsythe  
 Pat Forsythe  
 Bruce Fox  
 Julia Fox  
 Valerie Francois  
 D. Autumn Frase  
 Gordon Frase  
 Daniel Freedman  
 Ida Mae Freeman  
 Robin Freeth  
 Sonia Frehn  
 Arlene I. Friestad  
 Ruth Frobel  
 Sakae Fuchita  
 Judith Fuchs  
 William Fuchs  
 O. Roland Fuller  
 Joseph G. Galusha  
 Betty R. Garber  
 Carolyn Garber  
 James Garber  
 R. L. Garber  
 V. Edward Garber  
 Erwin Garcia  
 Shirley Garner  
 Berneice Garnsey  
 Bryan Garrett  
 Leonard K. Gashugi  
 Rutsinze Gashugi  
 Lawrence T. Geraty  
 T. S. Geraty  
 Gabriella Gerth  
 Glen Gessele  
 Donald P. Giarrusso  
 V. B. Gidding  
 G. Elaine Giddings  
 Thelma Gilbert  
 Betty Giles  
 Lena Giles  
 Duwayne Gilkey  
 Conrad Gill  
 Donald P. Gillespie  
 Farrell Gilliland  
 Maxine Gilliland  
 Florence Gillman  
 David W. Girardin  
 Zelda Glapstone  
 John Glass  
 Harold E. Goffar  
 Marilyn Goodwin  
 A. J. Gordon  
 Catherine Gordon  
 Janet A. Gourzong  
 Robert Grady  
 Catherine N. Graf

Roy E. Graham  
 Larry Grahn  
 Mildred Grandbois  
 Carol Grant  
 Frank R. Grant  
 W. R. Grant  
 Lynn Gray  
 Gary R. Gray  
 Sylvia Greaves  
 Richard Greeley  
 E. L. Green  
 Waive M. Green  
 Herbert Greer  
 Louis Gregorio  
 Josef A. Greig  
 David C. Grellman  
 Siegfried Grentz  
 Robert R. Greve  
 Marian Griffith  
 James Griggs  
 Arlene M. Grimley  
 Charlotte V. Groff  
 Albin H. Grohar  
 Irene Grohar  
 Harold Grosboll  
 John N. Grosboll  
 Kevin Grove  
 George L. Grow  
 Donald Gruesbeck  
 Douglas Gruesbeck  
 Valerie Gruesbeck  
 H. M. Grundset  
 G. P. Guild  
 Stephen Guptill  
 Floyd Gustafson  
 Pam Gustafson  
 Gunnar Gustavsen  
 Jon Gustavsen  
 Margery Guthrie  
 Mary Jane Guthrie  
 R. Stephen Guthrie  
 Richard Gutsche  
 Fritz Guy  
 Marcia Guy  
 G. A. Haas  
 Harvey Habenicht, Sr.  
 Deborah D. Habenicht  
 Donald Habenicht  
 Donna Habenicht  
 James Habenicht

Larry Habenicht  
 Frederica Habenicht  
 Fred E. Habenicht  
 Glen A. Habenicht  
 Harvey R. Habenicht  
 Herald A. Habenicht  
 Hilda Habenicht  
 James Habenicht  
 Judson P. Habenicht  
 Kathryn Habenicht  
 Larry Habenicht  
 Richard G. Habenicht  
 Robert Habenicht  
 Bernice Hafner  
 Lois Hafner  
 William Hafner  
 Ruth F. Hagele  
 James Hagerman  
 James L. Hagle  
 Janet E. Hainey  
 Lawanda Hainey  
 Wilbur E. Hainey  
 Jeanne Halama  
 Clifton E. Haley  
 George M. Haley  
 Linda Haley  
 Deborah Hall  
 Elgeva B. Hall  
 Holly Hall  
 Sandra Hall  
 William S. Hall  
 Hannu Halminen  
 Lester R. Halvorsen  
 Dan Halvorsen  
 Forest Halvorsen  
 Lester R. Halvorsen  
 James Halye  
 Geraldine Ham  
 Darlene Hamann  
 William Hamberger  
 Paul E. Hamel  
 Warren Hamel  
 Walter Hamlin  
 Richard Hammill  
 Richard J. Hammond  
 Sally Hammond  
 Marjorie Hamp  
 James Hamstra  
 Bonnie Jean Hannah  
 Harry W. Hannah

Ralph E. Hannah  
 Sarita Hannah  
 Daniel Hansen  
 Donald L. Hanson  
 Kaes Hanson  
 David P. Harder  
 Carol G. Harding  
 Elizabeth Hardt  
 Stanley Hardt  
 Thomas Harebottle  
 Frank G. Harrell  
 Carol Harris  
 Enid Harris  
 Patricia Harris  
 W. Daniel Harris  
 Fredrick E. Harrison  
 Ramrattie Harry  
 Marian M. Hart  
 Merlin Hart  
 Gerhard F. Hasel  
 Beryl R. Haskell  
 Herbert Hass  
 Theodore R. Hatcher  
 Markham Hatchett  
 Einar Haugen  
 Perry Haugen  
 Anna B. Haupt  
 David Haus  
 Paul Hawks  
 Darlene H. Hawley  
 A. P. Haynal  
 Helgi Heidar  
 Sigrid T. Heinlein  
 Kenneth Heinrich  
 Donna Heischober  
 Dale Heller  
 L. B. Heller  
 Joseph Hellman  
 Herbert Helm  
 Erma P. Henise  
 C. D. Henri  
 Jacqueline Henry  
 M. W. Henry  
 Pauline Henry  
 Marlane Hensel  
 Verna-Ruth Herman  
 Enoch V. Hermanson  
 Eliazer Hernandez  
 Eric Hernandez  
 Ronald A. Hershey  
 Robert Hervig  
 Ruth Hervig  
 Richard Herzberg  
 Mrs. Fred E. Herzer  
 A. J. Hess  
 William H. Hessel  
 Catherine Hewes  
 Gorton T. Hewlett  
 Pauline Hiatt  
 Charlotte Hickerson  
 Ruby J. Hicks  
 Edward Higgins, Jr.  
 Bruce Higgins  
 Hervey L. Higgins  
 Dorothy Hildebrand  
 Eugene W. Hildebrand  
 Michael Hile  
 Georgina Hill  
 Glenn Hill  
 Kendall E. Hill  
 Leonard E. Hill  
 Mary Hill  
 Stanley J. Hill  
 Violet E. Hill  
 William A. Hilliard  
 Dorothy A. Hillier  
 Grant Hillman  
 Carol Hilovskoy  
 Bruce Hinckley  
 Claude Hines  
 Greta Hines  
 Roy Hingley  
 John F. Hinkle  
 David E. Hodge  
 Jeannette Hodge  
 R. E. Hoen



Clifford Hoffman  
Herbert Holden  
E. Rosemarie Hollis  
Rae Holman  
John R. Hood  
June Hooper  
James Hopkins  
Maurice Hoppe  
Paul Horton  
Robert Horvath  
Duane F. Houck  
Susan Hough  
Caryl Hoyt  
Arnold Hudson  
Karen Hudson  
G. M. Huffaker  
Claude Hughes  
Tania Hunerjager  
Ivan Hunt  
M. Neil Hunt  
Walter L. Hunt  
Deanna Hunter  
Robert Hunter  
Corrine Hurt  
Dorothy M. Hust  
Ruth E. Husted  
Kathy Hutchins  
Bruce Hyde  
Helen Hyde  
Stanley Hyde  
Wayne Hyde  
Harold Iles  
Rosemary Iles  
W. Leslie Iles  
Shahin Ilter  
Douglas English  
Rick English  
Welton Ingram  
Pamela Inocencio  
Hazel Isaac  
Ericson J. Isles  
Mark Ivey  
Nel Jack  
Larry Jackson  
Ruby J. Jackson  
Cheryl Jacob  
C. L. Jacobs  
Gary A. Jacobs  
Ray L. Jacobs  
Hollis James  
Myrtle James  
J. M. Jansen  
Salim Japas  
Don Jardine  
Mireille Jean-Louis  
Don J. Jehle  
Donald Jensen  
Karren Jensen  
Vernon Jewett  
Judith Johansen  
Blanche Johnson  
Brigitte Johnson  
Cleo Johnson  
Gary Johnson  
Herman J. Johnson  
Ingrid Johnson  
Melvin G. Johnson  
Paul A. Johnson  
Paul E. Johnson  
Robert B. Johnson  
Robert C. Johnson  
Ruby Johnson  
Scott Johnson  
Terrence Johnson  
Cameron Johnston  
David Johnston  
Oliver Johnston  
Robert M. Johnston  
Deryl Jones  
Kathryn Jones  
Louise E. Jones  
Martin Jones  
Randall S. Jones  
Ronald Jones  
Stanleigh Jones  
Lowell Jordan

Wanda Jordan  
Fernando Jorge  
Flavia Jorge  
Carl Jorgensen  
Roy A. Jorgensen  
Alison Josiah  
Judith A. Josiah  
Jeffrey Joslin  
Lauren Joslin  
Randall Juberg  
Andre V. Jubert  
Gordon Julius, III  
William Justinen  
Lawrence Kagels  
Ruth Kaiser  
Stephen Kantner  
Anne Kantor  
Paul Kantor  
Eldyn L. Karr  
Gyl A. Kasewurm  
Cindy Kaufmann  
Edith S. Keeney  
Francis Keirnan  
Claude Keiser  
Donald A. Kellogg  
Verne Kelsey  
Jaunita Keney  
George Kent  
G. Arthur Keough  
Robert Kerr  
Thomas C. Kessler  
Jody Ketterman  
Mary Kettlehut  
Lois Kettner  
Avon Kierstead  
Phillip Kiesz  
Ernest Kijak  
John Kijak  
Philip Kijak  
Tatsuo Kimura  
Glee King  
Joan Beth King  
Laurain King  
Jeff Kinne  
Grace Kirk  
Dan A. Klein  
Adeline Kleist  
Rudolf E. Klimes  
Louis J. Klingbeil  
Rudolph Knauff  
William E. Knecht  
Donald Knepel  
Lester Knickerbocker  
Mary Beth Knoll  
Thomas Knoll  
Timothy Knott  
Valerie Knowles  
Donald Knudsen  
Kenneth Knutsen  
Susan J. Knutson  
Erna Mae Koch  
Gudrun A. Kohler  
Ursula J. Konegen  
Richard Koobs  
J. Mailen Kootsey  
Jerry Kopitzke  
Merrilyn Kosier  
Elizabeth Kossick  
John Kossick  
Cynthia Kotanko  
Betty Koudele  
Elizabeth Koudele  
Lee Kramer  
Douglas D. Kraner  
Lewis Kraner  
Laura Krater  
Paul Krater  
Annemarie Krause  
Melvin Krause  
G. M. Krick  
Fritz Krieger  
Claudio Krieghoff  
Barbara J. Kriigel  
A. E. Krogstad  
John A. Kroncke  
Roger Kruger

Harold Krull  
Sharon Kubecka  
Sakae Kubo  
David Kuebler  
William Kuester  
Bonnie Kugel  
Paul Kuhlman  
Takeo Kurahashi  
Arnold Kurtz  
Donovan Kurtz  
Laren Kurtz  
Diana Kyles  
Oystein La Bianca  
Richard La Tour  
Charles LaCount  
Ruth LaCount  
Margrace R. Ladd  
Ralph Lafave  
Doug Laing  
Richard Lainson  
Chloricia Lake  
Sandria Lalasingh  
Geeta R. Lall  
Paula Lamnek  
Belinda Lamon  
James E. Lance  
Lewis R. Langworthy  
Alice Lankford  
Stephen Lanto  
Louise Larmon  
Bent Larsen  
Elisabeth Larsson  
Adele Laszlo  
Mary H. Laszlo  
Miranda Lau  
Elizabeth Laughlin  
A. George Lawrence  
Beverly Lawrence  
Don Lawrence  
Hazel S. Laws-N  
Huu Le  
David R. Lea  
Raymond M. Leadbetter  
Arthur E. Leavitt  
Barbara Lee  
Bruce E. Lee  
Frieda H. Lee  
James M. Lee  
Shaw Lee  
Richard Leffler  
Ernest Lemon  
Roy Lemon  
Wanda Lemon  
Luis Leonor  
Klaus D. Leukert  
Charles Lewins  
David L. Lewis  
Gideon Lewis  
Daniel K. Li  
Irma Lidner  
Elsbeth Lincoln  
Eugene Lincoln  
Holger A. Lindsjo  
Lavern Link  
Anna Liske  
Wilfred W. Liske  
N. Bradley Litchfield  
Murray Little  
L'Marie A. Littlefield  
Sharna Littman  
Dennis Litzinger  
Kenneth Livesay  
Donna J. Livingston  
Donald Lee Lloyd  
Sarita Lochstampfhor  
Grace Loewe  
Lloyd H. Logan  
Renee Logan  
David D. Loge  
Duane E. Longfellow  
Ruth Lopez  
Fern Losie  
Delmar Lovejoy  
Edward Lugenbeal  
Marilyn Lugenbeal  
Lynnette Luke

Robert Lukens  
Grace Lundquist  
Bernice Lunz  
Wallace Lusk  
Melody Ann Lutz  
Peter Machreiner  
Stanley Macklin  
Donald H. Madison  
Ruth Maehre  
Sheryl Magers  
Larry D. Mahlum  
Beter Majilang  
E. L. Malcolm  
Daniel Maletine  
Elizabeth Manley  
Roger Mann  
Hilda Mae Manning  
Timothy Manning  
P. W. Manuel  
Padmaja Manukonda  
Blair Mapes  
Susan Marihugh  
John Markovic  
Alfred Marple  
P. S. Marsa  
Evelyn B. Marsh  
Frank Marsh  
Joyce M. Marsh  
Robert Marsh  
Wendell Marsh  
Joe D. Marshall  
John Martin  
Elvia Martinez  
Sonja Mathers  
Colleen M. Mathews  
Robert W. Matthews  
Gordon Mattison  
Howard Mattison  
Henry Mattson  
Floyd H. Matula  
Patricia Mauro  
D. H. Maxson  
C. Mervyn Maxwell  
D. Malcolm Maxwell  
Stanley Maxwell  
Antoine Maycock  
Linda Mayer  
Tommy Mayer  
Annetta Maynard  
Raymond Mayor  
Robert K. McAllister  
Benjamin McArthur  
Nancy McBride  
Norman McBride  
Trevor McClymont  
Dean O. McDaniel  
Ilea A. McDaniel  
Margaret McFarland  
Roger McFarland  
Marjorie McGann  
William McGhee  
Mike McGuckin  
Bradley McIntyre  
James D. McKee  
R. L. McManaman  
Wesley McNeal  
James I. McNeill  
Lawrence McNitt  
Menton Medford  
Ernesto Medina  
Carlos Medley  
Alfred Meier  
Brenda Mejeur  
Thomas Mejeur  
Kenneth W. Melashenko  
Aleida Mena  
Barb Menhardt  
Carmelo Mercado, Jr.  
Linda Mercer  
William Mercer  
Marion Merchant  
Terri Merrifield  
Harold Messinger  
Arnold A. Michals  
Herbert J. Michals  
Sue N. Miklos

Manley Miles  
Carlene Miller  
Donald Miller  
Leroy Miller  
George Mills, III  
Lidia Milosevic  
Elsie Minesinger  
Georgene Minesinger  
Charles W. Mitchell  
Mary Jane Mitchell  
T. N. Mohan  
Kenneth R. Mohler  
Emil Moldrik  
Ruth Moldrik  
Harold W. Moll  
J. Ernest Monteith  
Donovan Moon  
Leona E. Moon  
Bernard Moore  
Marvin Moore  
Doris Moores  
Philip Moores  
David Morales  
Phyllis Morales  
Roy Morgan  
Maylis Mork  
Kenneth Morrison  
Shaunielle Morrison  
Ella Mae Morse  
Rhonda Mosby  
Joseph Mudry  
Paul Muffo  
Neil Mullins  
Jison Mun  
Elwin Munson  
Dewey Murdick  
Ruth Murdoch  
William Murdoch  
Efrain Murillo, Jr.  
Leon Murphy  
Milton J. Murray  
Robert A. Murray  
W. E. Murray  
Harriet Musk  
Andrew Mustard  
Patricia B. Mutch  
William Mutch  
Donald M. Myers  
Frederick J. Myers  
Robert Myers  
Virginia Nachreiner  
Andrew C. Nahm  
G. R. Nash  
James R. Nash  
Rosalyn Nash  
Angelito Naval  
Wayne A. Nazarenius  
Lenita Neal  
Leslie Neal  
George J. Nelson  
Judith Nelson  
Larry Nelson  
Perry Nelson  
Roscoe K. Nelson  
Tracy Nelson  
William R. Nelson  
John Nerness  
Katrina Nesbitt  
William Ness  
Merlynd Nestell  
Julia Neuffer  
John Neumann  
Lora Neumann  
Ronald A. Neumann  
Orlando G. Newball  
Robson Newbold  
Jennifer Newton  
Roy Nicholas  
C. Glenn Nichols  
Shiree Nichols  
Carolyn Nickel  
Michael Nickless  
Ethel Niemann  
Joel Noble  
Kim Norton  
Olga Oakland

Ellen S. Oblander  
 Dragomir Obradovic  
 Samuel Ocampo  
 Blanche Oetman  
 Harold Oetman  
 Mary Oettel  
 Young-Hyun Oh  
 David Okamura  
 Alberta Oliver  
 Bruce D. Oliver  
 Jessie A. Oliver  
 Loyal C. Oliver  
 Vernon Oliver  
 Elsie Olmsted-Cox  
 Bonnie Olson  
 Oscar Olson  
 Roy. E. Olson  
 W. R. Olson  
 Clarence D. Omans  
 Darrel Opicka  
 Donald Orrick  
 Florence Otto  
 Blythe Owen  
 Michael G. Owens  
 Gerhard F. H. Paddereratz  
 Bonnie Page  
 Ali Pakfetrat  
 John R. Pangman  
 Susan Parcels  
 Wilson Parcels  
 Sandra Park  
 Ted Parks  
 Delio V. Pascual  
 Geraldine C. Paterson  
 Thomas A. Paterson  
 Janet L. Patrick  
 Anderson W. Paul  
 Mark Pauls  
 Jim Pavelka  
 Faith Pearsall  
 George Peck  
 Robert G. Peck  
 Lein Pedro  
 Monica Peinado  
 Clara M. Pelton  
 Robert Pelton  
 Ephraim Pembleton  
 Elbio Pereyra  
 Ricahrd Perez  
 Zoanne H. Perez  
 Mrs. David Perilberg  
 Alice Perrine  
 Allan W. Perry  
 Edward Perry  
 Norm Perry  
 D. K. Peshka  
 Earl E. Peters  
 Daniel Peterson  
 Duane Peterson  
 Mauritz Peterson  
 Sandra Peterson  
 Michael Petricko  
 Marguerite Peugh  
 Beverly Phillips  
 Louis E. Phillips  
 Barbara Phipps  
 Raymond R. Pichette  
 Ulrich Piekarek  
 Ammi Pierce  
 Edna Pierce  
 Lela H. Pierce  
 Jennifer Pierson  
 Martha Pierson  
 Phyllis Pierson  
 Robert G. Pierson  
 Lawrence Pitrome  
 Rowland F. Pitts  
 Konni Plue  
 Steven Poenitz  
 Edna Pohlman  
 Loviere Pointer  
 Linda Polk  
 Lorraine Pollard  
 Esther Pomeroy  
 LaVerne Pomeroy  
 C. D. Poole  
 Charles D. Poole  
 Frances Poole  
 Glenn G. Poole  
 William S. Poole  
 Michel Porcena  
 Judith Porterfield  
 Grace J. Portrum  
 Richard A. Postman  
 Hazel Potash  
 Nicholas Poulos  
 Richard K. Powell  
 Cislyn Preddie  
 Laura Prescod  
 Barbara Priest  
 Dorothy D. Prince  
 Herbert Pritchard  
 Donald E. Prosser  
 Robert Prouty  
 Sheryl Pulido  
 Dennis Pumford  
 Renwick Purcell  
 Glenn B. Purdham  
 Alson E. Pusey  
 Darlene Puymon  
 Roy Puymon  
 Samuel Quayee  
 Deborah Rach  
 Jerry M. Radostis  
 Joseph Rago  
 Marvel Ramsay  
 Bryant Ramsey, Jr.  
 Carolyn Ramsey  
 Gary Russell  
 Ivy Ramsook  
 David Rand  
 Charles Randall  
 Humberto Rasi  
 Julieta Rasi  
 Joseph Rasmussen  
 Kenneth E. Rasmussen  
 Donald E. Rebedew  
 Denton Rebok  
 Clarence Reedy  
 C. A. Reeves  
 Rosemary Reeves  
 Mark B. Regazzi  
 Gertrude Regester  
 Margaret Regester  
 Royce Regester  
 Teresa Regester  
 Mary Ellen Reiber  
 Milton Reiber  
 Nick Reiber  
 Conrad Reichert  
 G. Edward Reid  
 Gladys Reid  
 Charles A. Rentfro  
 Linda Renz  
 Raymond Retterer  
 E. Robert Reynolds  
 Connie Rhea  
 Elma Rhodes  
 J. Wesley Rhodes  
 John Rhodes  
 George Rice  
 Lavern Rice  
 Linda Rice  
 Arthur Richards  
 H. M. S. Richards  
 Sibyl Richards  
 Francine Richardson  
 William E. Richardson  
 Pat Rickerman  
 Hulda M. Riffel  
 Kenneth Riley  
 Linet Riley  
 Lenore Rittenhouse  
 Cheeri Roberts  
 Helen Roberts  
 Raymond Roberts  
 Robert Roberts  
 Roger Robertsen  
 Alice Robertson  
 Esther Robinson  
 Grace Robinson  
 Karolee Robinson  
 Ola Robinson  
 Robert J. Robinson  
 Whit Robinson  
 Gregg Robinzine  
 Dair S. Rochau  
 Nancy Rodriguez  
 Senez Rodriguez  
 Claudia Roedell  
 Robert Rogers  
 Barbara Rondelle  
 Bruce A. Ronk  
 Gertrude V. Roosenberg  
 John Roosenberg  
 Herbert Rorabeck  
 John Rorabeck  
 Walter R. Rosenberg  
 Marguerite Ross  
 Nellie Ross  
 Mary E. Rossier  
 Mildred Rottmann  
 S. Clark Rowland  
 Eunice J. Rozema  
 Marian Rueckert  
 G. F. Ruf  
 Richard Runnals  
 Leona G. Running  
 T. Irville Rush  
 Randy Rusher  
 Alan Rusk  
 Dorothy Rusk  
 Don Ruskjer  
 David Russell  
 Gary Russell  
 James S. Russell  
 George Ryan, Jr.  
 Royal Sage  
 Donald Sahly  
 Patricia Saliba  
 Slimen Saliba  
 Ross Salyer  
 Arthur Santos  
 Clarence Sarr  
 Nikolaus Satelmajer  
 Ruth N. Satelmajer  
 Joseph G. Sauff  
 Jerald Saunders  
 Kenneth Saunders  
 Austin Sawvell  
 Gertrude Saxman  
 Marie Schaffer  
 Wayne Schaffer  
 Lawrence Schalk  
 Richard Schell  
 Anette Schilling  
 Donald C. Schlager  
 Margaret Schlager  
 Fred Schlehuder  
 Frances Schleicher  
 Charles Schlunt  
 Allyne Schneider  
 Gayle Schoepflin  
 Bernice Schoonard  
 Daniel Schoun  
 William Schoun  
 David W. Schrage  
 Dennis Schroeder  
 Richard Schultz  
 Debbie Schultz  
 Frank R. Schultz  
 Chet Schutt  
 Robert C. Schwab  
 Richard W. Schwarz  
 Walter Schwersinske  
 David Scofield  
 Arlene Scott  
 David Scott  
 Richard Scott  
 Vivian Scott  
 C. O. Seek  
 James Segar  
 Keith Seidenstricker  
 Cheryl Senior  
 Sharon Senior  
 Genevieve Serns  
 Charlie Serrano  
 William Seth  
 B. E. Seton  
 Madge Shattuck  
 Denise Shaw  
 Karen Shea  
 H. Raymond Shelden  
 Penny Shell  
 Catherine Shepard  
 Bradley Sheppard  
 Eric Shepperd  
 Fred Sherlock  
 Elwood Sherrard  
 Dave Sherwin  
 Joyce Sherwin  
 Neal Sherwin  
 Donald Sherwood  
 Bonnie Shibley  
 Robert Shimek  
 Donald K. Short  
 Harry Show  
 Carrell Shuler, II  
 Peter Shuler  
 Audrey Shull  
 Daniel Shultz  
 Edmund Siagian  
 Randy Siebold  
 Arlene E. Siepman  
 Carl Sigler  
 Todd Silver  
 Ila Simmons  
 Amos Simorangkir  
 Charles Simpson  
 Richard V. Simpson  
 Karlene Sinclair  
 Jonathan Singleton  
 Victor P. Sirotek  
 Gunnar Sjoren  
 James K. Skahan  
 Shirley Skala  
 Gordon D. Skeoch  
 Aimee Smith  
 Anita Smith  
 Carl Smith  
 Chana I. Smith  
 Clark Smith  
 David E. Smith  
 Edith L. Smith  
 Frances Smith  
 Frederick D. Smith  
 Gordon Smith  
 Lillian Smith  
 Linda Smith  
 Martin Smith  
 Phillip Smith  
 Reger C. Smith  
 Robert T. Smith  
 Vaida M. Smith  
 John Snider  
 Andrew J. Snyder  
 Barbara Snyder  
 Charles W. Snyder, Jr.  
 Donald D. Snyder  
 Keith Snyder  
 Stuart C. Snyder  
 Sophia Solomon  
 Marley H. Soper  
 Ardis Sowler  
 G. Clayton Sowler  
 Richard C. Sowler  
 Anita H. Spalding  
 Don Spaulding  
 Walter Specht  
 Mary Speidel  
 Eldon L. Spicer  
 Lawrence Sprecher  
 Joan Stafford  
 Thomas Stafford  
 Phyllis Standen  
 Valerie Standen  
 Gordon Standish  
 David Stanford  
 Teresa Stanton  
 Russell Staples  
 Elwood W. Starr  
 Elton H. Stecker  
 Rheete Stecker  
 Allen R. Steele  
 Claude Steen  
 Bruno Steinweg  
 F. R. Stephan  
 Ada Stephens  
 Hugh H. Sterling  
 Dana Stevens  
 Ferne W. Stevenson  
 Pam Stimac  
 David Stinson  
 Jean Stivers  
 Richard C. Stocker  
 Darice Stoehr  
 Lynn Stolz  
 Pamela Stolz  
 Helena Stout  
 Ronald Stout  
 Minerva E. Straman  
 Russell Straman  
 Thomas Straman  
 Timothy Straman  
 Kenneth A. Strand  
 R. D. Strasdowsky  
 E. A. Streeter  
 Lloyd C. Strickland  
 Sheree Strom  
 Evelyn Studebaker  
 Izella Stuiwenga  
 Clayton Sugg, Jr.  
 Kevin Sullivan  
 Marvel Sundin  
 David N. Susens  
 Helen Susens  
 Pamela Swanson  
 Orval Swarm  
 Donn Swartz  
 Lillian Swartz  
 Donald Swensen  
 Raymond O. Swensen  
 Forrest Sykes  
 Gale Sylvester  
 Daniel Szykowski  
 Kathy Szykowski  
 Virgil Tackett  
 Anna L. Taggart  
 George H. Taggart  
 Audrey Tait  
 Bradley Tait  
 Reid Tait  
 Edith Talmage  
 Florence F. Tamanaha  
 Hallie Taylor  
 Harry W. Taylor  
 Malvina Taylor  
 Robert Tebo  
 Lois Teel  
 Abraham Terian  
 Randolph Terlecki  
 Emil Tetz  
 John T. Thiel  
 Edwin Thiele  
 Claude Thomas, Jr.  
 Clyde Thomas  
 Daniel Thomas  
 James Thomas  
 Miles Thomas  
 Patrick S. Thomas  
 Bernard L. Thompson  
 Christine Thompson  
 Thomas Thompson  
 C. Torben Thomsen  
 Robert Thomson  
 Ruben S. Thorbus  
 Asa C. Thoresen  
 B. Vincent Tibbets  
 David W. Tilly  
 Douglas Tilstra  
 Norma Timm  
 Cliff Toews  
 Edith Tokics  
 Joan Tomlin  
 Fred Torkelson  
 Ralph Townsend, II  
 Daniel Townsend  
 Homer Trecartin  
 Eleanor Trefz  
 Jamie Trefz  
 Diane Trickett

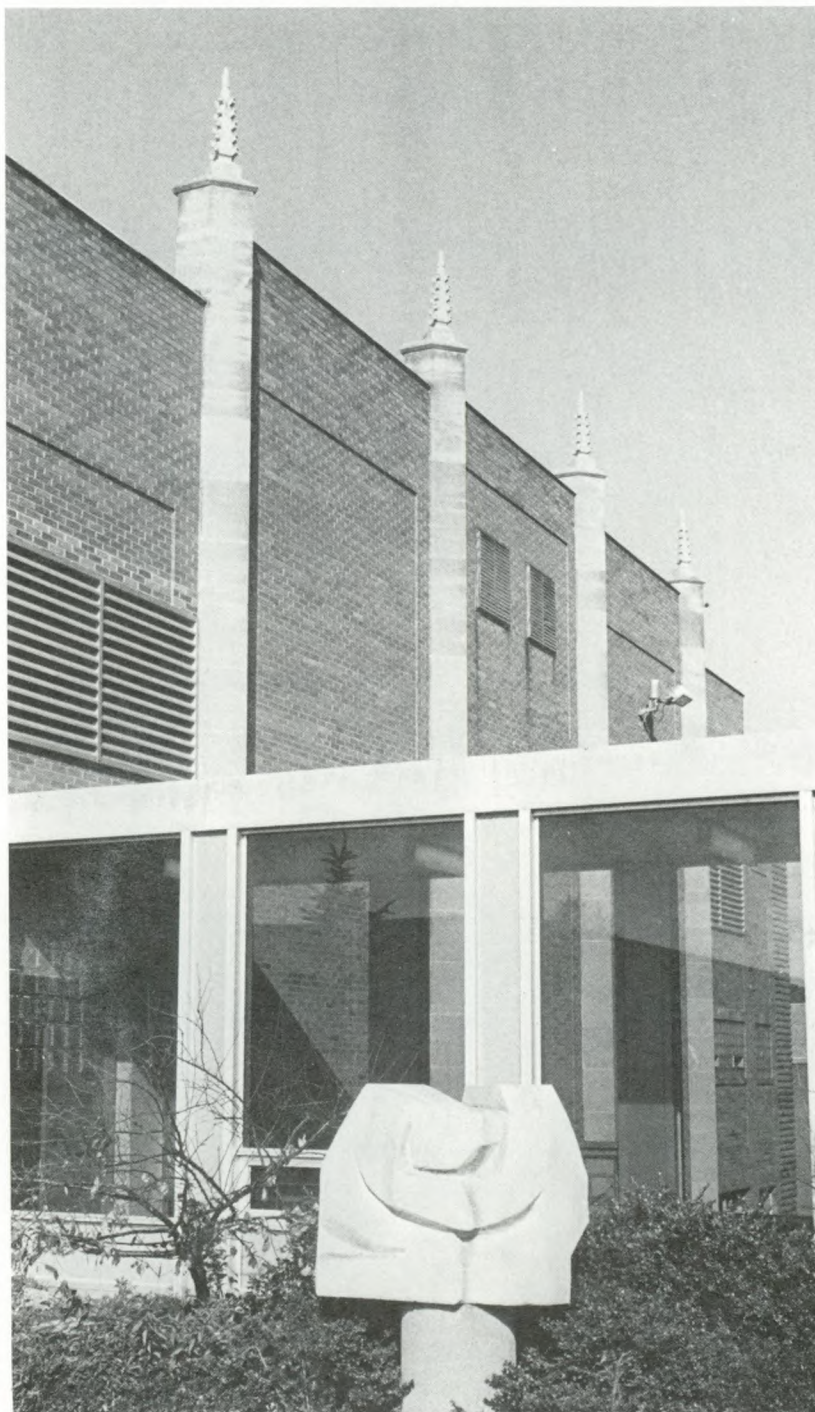
Verda B. Trickett  
 Brian Tritch  
 Charles Trubey  
 Naomi Trubey  
 Norman L. Trubey  
 Edward Truby  
 Naomi Truby  
 Arthur Tucker  
 Robin Tucker  
 R. Edward Turner  
 Walter R. Turner  
 James Tweddell  
 Lally Ulery  
 Larry Ulery  
 Karen Ulloth  
 Laurel M. Underwood  
 Elizabeth Unger  
 Douglas Ursin  
 Erling Utne  
 Richard H. Utt  
 William R. Vail  
 Allie T. Valentine  
 Joeli Valleray  
 Nephtaly Valles  
 R. Wayne Vallieres  
 Ronald B. Vallieres  
 Kevin Van Allen  
 Vickie Van Allen  
 Roger Van Arsdell  
 Donald E. Van Duinen  
 Andre Van Niekerk  
 J. C. Smuts van Rooyen  
 Clifford Vance  
 Sheryl Vance  
 Neal Vanderwaal  
 Emmett K. Vandever  
 Roy Vartabedian  
 Noemi Velazquez  
 Sandra Veldman  
 Fred Veltman  
 Richard P. Verhelle  
 Matthias Vheru  
 Frances Reed Vielhauer  
 Damaso Villalba  
 Claude Villeneuve  
 Noble Vining  
 Donald Visani  
 Eva Visani  
 Hernan Visani  
 Charlene L. Vitrano  
 Roger Vitrano  
 Steven Vitrano  
 Stanford Voegele  
 G. Bruce Vogt  
 Nina Vollmer  
 Gladys Vorce  
 Ronald Vyhmeister  
 Werner K. Vyhmeister  
 Wyman S. Wager  
 Jane Wagner  
 John J. Wagner  
 Beauty Wakaba  
 Irene Wakeham  
 Dennis Wales  
 Hampton E. Walker  
 Lois Walker  
 Malinda Walker  
 Regina Walker  
 Sherman Walker  
 Robert E. Wall  
 Marijane Wallack  
 Nancy Wallack  
 A. V. Wallenkamp  
 Adele Waller  
 Cloey J. Walls  
 Clotilde Walls  
 Louise Walther  
 Julie Walwyn  
 Ho Chun Wang  
 Waylene Wang  
 William Warcholik  
 Daryll Ward  
 Verlie Ward  
 Eldean Ward  
 Marvin Ward  
 Patricia Warner

Russel Warner  
 Steven E. Warren  
 Warren Warren  
 Douglas Wartzok  
 Leonard G. Wartzok  
 Lee J. Waterbrook  
 S. Douglas Waterhouse  
 Rita Waterman  
 Beverley Waters  
 Georgia Watson  
 Saleem Watson  
 Sammy H. Watson  
 Kit Watts  
 Jon Weakley  
 Donald Weaver  
 Arthur Weaver  
 Cecil E. Webb  
 Ferdinand H. Weber

Kirsten Weber  
 Merle E. Wehner  
 Paul M. Weichert  
 Philip L. Welkin  
 F. B. Wells  
 Dawn Welsman  
 Lee Ann Wennerberg  
 Helen M. Werner  
 Phillip Werner  
 Marlon Wessman  
 Michael West  
 Edwin West  
 Evaline West  
 Laurence West  
 Michael West  
 Ronald M. West  
 Ruth West  
 John Westerberg

Melody Wheeler  
 M. Eulalia White  
 Norman White  
 Oliver C. White  
 Wava White  
 William White  
 Ursula Whiting  
 Catherine H. Whitis  
 Merle Whitney  
 Glenna N. Widicker  
 Timothy Wieder  
 Lynne S. Wiederkehr  
 David K. Wilburn  
 Mark J. Wilburn  
 Katherine Wilcox  
 Richard Wilkin  
 Virginia Wilkin  
 Robert Wilkins, Jr.

Robert Wilkins, Sr.  
 W. J. Wilkinson  
 Agnes Williams  
 Alice Williams  
 Arabella M. Williams  
 Edna L. Williams  
 H. Haskell Williams  
 Jeanna Williams  
 Oweata Williams  
 Randall Williams  
 Roy Williams  
 Shelley Williams  
 David K. Wilburn  
 Thomas Williams  
 Werner Williams  
 Edna L. Williamson  
 Clark M. Willison  
 Allan Willmott  
 Josie Willmott  
 Carolyn Wilson  
 Donald W. Wilson  
 James Wilson  
 Jeffery K. Wilson  
 Kenneth Wilson  
 Merette Wilson  
 Muriel Wilson  
 Oliver K. Wilson  
 Phillip W. Wilson  
 Mary Winders  
 Bobbie Sue Wohlers  
 Carol Wohlfeil  
 Dale Wolcott  
 Hollis W. Wolcott  
 Louis Wolf  
 George Wolfer, II  
 April Wong  
 Dixie Wong  
 Kathryn Wood  
 Lori Wood  
 Robert Wood  
 Weldon Wood  
 Wilton H. Wood  
 Mack Woods, Jr.  
 Douglas Woods  
 Dan C. Woolf  
 Richard H. Worley  
 Herb Wrate  
 James Wright  
 Janet Wright  
 Orville Wright  
 M. A. Wyman  
 Ralph Wyman  
 Peggy Yamanaka  
 Lorraine Yarrington  
 Norman A. Yeager  
 Opal Hoover Young  
 John Youngberg  
 Daniel Zabaleta  
 Charles Zacharias  
 Ruth Ann Zech  
 Kenneth Zeck  
 William Zehm  
 Jonathan Zima  
 Devin Zimmerman  
 Judy Zimmerman  
 Walter Zimmerman  
 John Zollbrecht  
 June E. Zumstein



### Friends

Andrews University receives many gifts each year from persons whose relationship to the university is that of "friends." Most of these gifts are unrestricted, others are designated for a specific purpose. These gifts are a source of strong support for which the university is deeply grateful.

Thomas Abbott, Jr.  
 George and Mona Abel  
 Blanche F. Adams  
 Paul S. Adams  
 Charles Allen

Ethelyn Allen  
 Opal and Clark Allen  
 Dan and Verna Altman  
 Judith Anderson-Schaller  
 Charles L. Anderson  
 Jodi Anderson  
 John Anderson  
 Mary Anderson  
 Robert F. Anderson  
 Theodore L. Anderson  
 Kenneth C. Andrews  
 Mrs. J. M. Anholm  
 Gene Armstrong  
 Marian E. Aronson  
 Nancy E. Askin  
 Lucille Avila  
 Nicholas Ayo  
 Linnea M. Backlund  
 Cloey Baer  
 Doris E. Bain  
 Mary Bain  
 Dorothy H. Baker  
 Edna Baker  
 Laura Baker  
 Robin W. Baldwin  
 John H. Ball  
 Lewis Barber  
 Olive Barber  
 Rose Barhydt  
 Grover Barker  
 Virginia Barthelemy  
 Joseph M. Bartz  
 Larry T. Bashark  
 Stuart B. Basquin  
 Arthur Bath  
 Gertrude Battle  
 A. W. Bauer  
 Mary Ellen Beatty  
 Richard Beckermeier  
 Siegmund Beimfohr  
 A. Beistle  
 Dorothy F. Beltz  
 Anne Bender  
 Florence Benjamin  
 Frank L. Benninghoff  
 Mr. and Mrs. Arnold Benson  
 Rodney A. Benson  
 Dorothy Ann Benz  
 Victoria Berecz  
 Carla L. Beres  
 George Berliant  
 James Bernard  
 Edwin Bidwell  
 James M. Bishop  
 Wilber A. Bishop  
 Anna Bitzer  
 Myrtle Blackett  
 Wallace Blair  
 Teresa Blankenship  
 Ledra Blume  
 Stephen Bodony  
 Mr. and Mrs. Bodrug  
 James Bohnstadt  
 Vernon C. Bohr  
 Mrs. Richard W. Boll  
 Frances Bondranko  
 Avanelle Boorda  
 Frank W. Booth  
 Victoria Boothby  
 Mrs. James Borden  
 Henry Borne  
 Mildred P. Borton  
 Calvin Bower  
 Norma J. Boyer  
 J. N. Boyts  
 Rose Bracebridge  
 Robert E. Bradford  
 Rosamond T. Brahman  
 Christobel Brandt  
 Maxine Brantley  
 James Brashler  
 Allan Breakie  
 Rebecca J. Brendel  
 Rachel Brenneman  
 Marvin Brenton, Jr.  
 George Brewer  
 Paul E. Bridgman  
 Henrietta Brietzke  
 Frances H. Briggs  
 Erna A. Brink  
 David A. Brockway  
 Elsie Broeckel  
 Mieke Broeckel  
 Walter Bromba  
 Robert G. Brothers  
 Walter Browe  
 W. S. Brower  
 Allen V. Brown  
 Evelyn Brown  
 J. Bruce Brown  
 William G. Brown  
 Peter B. Brownlie  
 Dorothy Brumbaugh  
 J. Otho Buck  
 Ronald E. Buell  
 Paul R. Bueter  
 Iva Bugbee  
 Ruth Buller  
 Patricia Bunker  
 James E. Bur  
 Don E. Burch  
 Roger Burgess  
 Rose Burket  
 Mrs. M. L. Burnett  
 Agnes R. Burns  
 Robert Burns  
 Marie Burrows  
 Robert Burton  
 Harry Bush  
 Enos Butenuth  
 Benjamin Butherus  
 Henry E. Butler III  
 Margaret Butler  
 Margaret Button  
 Jean Buyze  
 Chester Byrns  
 Jeanette Cadwell  
 Reanur Calhoun  
 Carl W. Campbell  
 Marina Carlin  
 Richard A. Carlsen  
 Paula J. Carlson  
 Helen M. Carnick  
 Fred Caspari  
 Penni Casper  
 Connie Cassani-Beard  
 Carol L. Cassini  
 Lloyd Caudill  
 Mary Ann Cerny  
 Paul R. Chagnon  
 Raymond Champion  
 Helen A. Chase  
 James W. Chase  
 George Cheeseman  
 Sandra A. Chilson  
 Robert Chrest  
 Marilyn R. Christian  
 Minnie Christiansen  
 Ruth Christiansen  
 Helen Christofferson  
 Frances M. Church  
 Ann K. Clark  
 Erline Clark  
 Mary J. Clark  
 Walter Clark  
 Elvira Cleary  
 Frank J. Cleary  
 Laura Cleary  
 Mr. and Mrs. J. L. Clements  
 Eva R. Coffman  
 Sarah Coffman  
 J. D. Coldeberg  
 Ellen Collins  
 Marguerite K. Collins  
 Nolvia Collins  
 Wendell C. Compton  
 Nancy N. Conard  
 Ann M. Conklin  
 Bill Conway  
 Grafton Cook  
 Max Coon  
 William T. Cooper  
 Herbert Copenhaver  
 Ruth Ann Copin  
 George H. Corson  
 Elizabeth Cotter  
 Darel Courser  
 William Cowin  
 Doris M. Cox  
 Merwyn Crandell  
 William R. Crandell  
 John M. Crouse  
 Joan Dana Crowe  
 Estella Crozier  
 William P. Crumpacker  
 Thea M. Cubbon  
 Ann B. Cullens  
 Mary Lou Cummings  
 Burnell Curless  
 Charles E. Current  
 Dennis R. Currier  
 Raymond R. Curtis  
 Robert P. Curtis  
 John P. Daggett  
 James Dahlgren  
 Glenna Damron  
 Kenneth Daniel  
 John and Jane David  
 Lloyd Davidson  
 Margaret Davies  
 Janet M. Davis  
 Loyal Davis  
 Richard Davis  
 Mildred H. Dawson  
 Ellis Day  
 Pearl Day  
 Margaret L. De Atley  
 Helen L. De Blumenthal  
 Robert F. Deacon  
 Rollin L. Decamp  
 Velma Deckard  
 Richard Dell  
 David F. Dent  
 Beverly Denton  
 Paul Detrisac  
 Sherman S. Devine  
 James Devries  
 Erika Di Biase  
 Alma L. Dibois  
 Susan J. Dietrich  
 E. Digneo  
 Elinor S. Dittes  
 Martha Divnick  
 Morton Doblin  
 Fred Dodge  
 Katharine Dooley  
 Jean Dortch  
 Mona Dower  
 Alan Dowty  
 Carl J. Drexler  
 Olga Drigants  
 Raymond Duchateau  
 William Dugdale  
 Claire M. Duggan  
 Magdalene Dumke  
 Suzan M. Dunaway  
 William Dunigan  
 Dorothy H. Durham  
 Gwendolyn Dutton  
 Gerald V. Dwan  
 David M. Dykstra  
 Andrew Dzida  
 Timothy Eberhardt  
 Kathryn Edgell  
 Charles Edinger  
 H. M. Egner  
 Mrs. R. Eighme  
 Ruth Alice Ekdahl  
 A. J. Eller  
 Alice Ellingson  
 Mrs. Thomas Elliott  
 Irene Ellis  
 Kathryn Ellis  
 Ernest V. Eltz  
 A. J. Elve  
 Audrey E. Emlong  
 Edna Enders  
 Sondra F. Engel  
 Francis J. Englert  
 Sam Ennis  
 Lawrence Ernst  
 Ernestine Estis  
 Lorraine S. Evans  
 Marjorie B. Evans  
 Edward Everett  
 Henry Ewing  
 William Falconer  
 Duane C. Fancher  
 Alice R. Farnar  
 Don Fehlberg  
 Angela Felabom  
 Arthur Felesky  
 Walter V. Fennander  
 C. Ferguson  
 Dirk Ficca  
 Alan D. Fields  
 Robert Fillman  
 Michael Finnegan  
 Erla Finson  
 Rene Fischman  
 Joseph E. Fischhoff  
 Irene Fishell  
 Harold Fisher  
 Zeal Fisher  
 Alana L. Fitzsimons  
 Elizabeth Flippo  
 John H. Flokstra  
 Mr. and Mrs. John Foch  
 Helen Fong  
 Imogene Forbes  
 F. Harold Forburger  
 Agnes Foster  
 Alma L. Fowler  
 Elaine Fowler  
 Horace Francis  
 Kenneth Franz  
 George Frazier  
 Carlyle Frederick  
 Alma H. Frederickson  
 David G. Freeze  
 Earl French  
 James W. Frick  
 Josef Fried  
 Hulda M. Fritz  
 Doris B. Frobel  
 Thomas M. Fry  
 Carrie B. Fulford  
 David M. Futa  
 David Galusha  
 Blaine W. Gamble  
 Phyllis Garber  
 Francis Gardner  
 Norma Gardner  
 Thomas A. Garvin  
 Eugene Gassere  
 Mina R. Gaston  
 William C. Gates  
 Judith A. Gault  
 Thomas Gazella  
 Frank Geerligns  
 Helen and Michael Geglio  
 Nora Geissler-Snell  
 Charles Geoffrion  
 Patricia Geoffroy  
 Addie Gilbert  
 Gwen L. Gildea  
 Montell G. Gillam  
 David W. Girardin  
 Ted Glaser  
 Chas Glidden  
 Robert F. Gloor  
 Lois G. Godersky  
 Paul Godshall  
 Phyllis Goertz  
 Walter Goff  
 Sam Goldberg  
 Ernest Goodell  
 Thomas H. Goodgame  
 Carol Mae Goodhew  
 Charles Gordon  
 Marilyn Gore  
 Rubin Gould  
 C. Peare Grabowsky  
 Jean B. Graham  
 Michael Graham  
 Ronald A. Grant  
 Milen Gray  
 Paige L. Gray  
 Earl Grayson  
 Wilna M. Grayson  
 Cornell Greavu  
 Carl Greci  
 Phyllis Greeley  
 Donna Greene  
 Erna Greene  
 William Greene  
 James P. Griggs  
 Edgar H. Grimm  
 Paul P. Grodner  
 Mr. and Mrs. H. P. Grosboll  
 Audrey Grossman  
 Elener Grossman  
 Mrs. H. Grundset  
 Joseph Guerrero  
 Joan Guikema  
 Nora Dunn Guild  
 Floyd Gustafson  
 Hilda Gustafson  
 Jack Guy  
 Walter Haase  
 Anna Hadley  
 Mr. and Mrs. James Hageman  
 Hedy Hagen  
 Barbara S. Hagopian  
 Ethan Haimo  
 E. Halbig  
 Clifton E. Haley  
 Lynda K. Hall  
 Rudy Hall  
 Don Halvorsen  
 Marjorie L. Hammond  
 Ruth G. Hammond  
 Beatrice M. Hampton  
 Virginia Handy  
 Carol J. Haney  
 Willis Hankins, Jr.  
 Howard Hanks  
 Maecel T. Hansen  
 Martie Hansen  
 Dorothy L. Hanson  
 Frederick M. Hanson  
 Herndon Harding  
 Benson W. Harer, Jr.  
 Ivy Harris  
 Velma Harris  
 Julian Harrison  
 Margaret C. Harvey  
 Catherine Hatcher  
 Fred Havens  
 Ella M. Hawks  
 Christine Haynal  
 Kenneth P. Head  
 Sandra Hehn  
 Violet Heid  
 Michael Heidenreich  
 Martha Heil  
 Virginia R. Henderson  
 Erna Henkelman  
 Rudy Henn  
 Roy L. Henrickson  
 Erna Hentsch  
 Mignon G. Heppler  
 Ray Herbel  
 Glenda Hernandez  
 Edna A. Herrick  
 Pearl Herzog  
 Johanna Hess  
 Ralph A. Hess  
 Heather Hessel  
 Kenneth H. Hesselink  
 Albert E. Heustis  
 Alice Hibbler  
 Mr. and Mrs. Andrews Hicks  
 Mrs. Vyvyan Hicks  
 Margaret H. Hilbink  
 Roberta Hill  
 Mr. and Mrs. H. R. Hilton  
 Harry R. Himes  
 Robert Hoch  
 Paul R. Hochstetler

Shirley Hofer  
Diane R. Hogue  
Dean H. Hoiland  
Oliver J. Holbert  
Saritea M. Holdeman  
James F. Holden  
Ruth E. Holden  
Ronald Holder  
Marie Holland  
Elsa Hollenbach  
Aletha Holloway  
Marjorie A. Holmes  
Peter G. Holmstrom  
Elaine Holt  
Ronald H. Hoover  
June Horsley  
H. E. Hoversen  
Inge-Lise Howse  
Charlotte A. Hubbard  
R. Robert Huckfeldt  
Sharon K. Huckfeldt  
Lee Huddleston  
Dean Hudnutt  
Mr. and Mrs. C. G. Hudson  
Helen L. Hunt  
Bart Huron  
Sharon K. Hussey  
Connie and Richard Iattoni  
Robert D. Ibach, Jr.  
Mrs. Mae Ingram  
Filemon J. Inocencio  
Ronald Irwin  
Lorena Ivey  
John H. Iwan  
Ilona F. Jackson  
John M. Jackson  
Ethel L. Jacobek  
Clarris Jacobs  
Ross James  
Jeanne Jarnes  
William Jaroszewski  
Jerome M. Jenkins  
Karen A. Jennings  
Florence Jenny  
Nettie A. Jewell  
Erla Jinson  
Paul D. Joers  
Althea Johlfs  
Walter Johnson, Jr.  
D. Robert Johnson  
Donald A. Johnson  
Ethel A. Johnson  
Lewis W. Johnson  
Mrs. Evert Johnson  
Patricia Johnson  
Wayne H. Johnson  
Harold W. Johnston  
Mr. and Mrs. Paul Johnston  
William H. Johnston  
Jack M. Joldersma  
Jeanne O'Harra Jones  
Mary Jones  
R. M. Jorgensen  
Laurie Joslin  
Fritz Judt  
John Juhasz  
Wayne Juhl  
Joyce Juriansz  
Margaret Jurkiewicz  
Virginia Justice  
Amanda Kaiser  
David Kane  
Marjorie H. Kane  
Sheryl Kaptur  
O. J. Kari  
Kathleen Karnes  
Jon Kauffmann-Kennel  
Honore Keckler  
Charles Keel  
Esther Keeler  
Julie D. Kelemen  
Edward A. Keller  
Michael Kelley  
Geneva Kellogg  
Elizabeth W. Kelly  
Martin E. Kemmerer

Doris Kershner  
Edward A. Ketterer  
Mildred Kidder  
Dennis W. Kieff  
Rochelle Kilgore  
Jason Kilsby  
Charlyn Y. Kim  
Mr. and Mrs. Joseph Kim  
Gretchen Kimble  
Astrid King  
Dale King  
Elizabeth Kinsey  
Josephine A. Kirkpatrick  
Maude Klingaman  
Candace L. Klosinski  
Betty Kluge  
Lyle Knecht  
Margaret Knecht  
Esther Knibbs  
William J. Knight  
Frances E. Koch  
Richard F. Koch  
Kurt Koerting  
B. J. Kohler  
Richard Kohler  
Arluss M. Kohn  
Anton Konegen  
Kees and Mary Kooper  
Jean Kordesh  
Elizabeth Korensky  
Melvin H. Korrell  
Betty Koudele  
Leo Kowalski  
David Koyzis  
Gerald Krager  
Lois Krause  
Paul A. Krause  
Henry Kreuzman, III  
Mary E. Kronstein  
M. Krysovak  
Claudia L. Kselman  
Mrs. C. Kuerbiss  
Cynthia Kuhn  
James Kulwicki  
Susan A. Lackey  
Stephen Lakosik, Jr.  
Katherine S. Lamborn  
Mr. and Mrs. Clyde Lance  
Alan Larkin  
A. Larsen  
Harvey Larsen  
Charles Larson  
Margie L. Larson  
William Larson  
Myrna Latham  
Rev. Anthony J. Lauck  
Howard Lautner  
Margaret S. Laven  
Robert C. Laven  
Herbert Lawin  
Edith Lawrence  
Mary Layton  
Daniel Leatherman  
Lilly Leatz  
Virginia R. Leavy  
Elsie Leffler  
Arthur Leinen  
Gladys Lenheim  
Joan Leonhardt  
Gerald F. Lerman  
Michael Lerman  
Charlotte Lesovsky  
Suzanne Levatin  
Gerald Levi  
Albert P. Levin  
Kelly Lewis  
William S. Liers  
Bernice M. Lilly  
R. Lindenberg  
Viola C. Lindenfeld  
Jason D. Lindower, Jr.  
John R. Lionberger, Jr.  
Al Liske  
Bert Liss  
E. Elizabeth Little  
Nancy Liu

Sharon Liu  
Joel and Laura Liveris  
Alan D. Lopp  
Elaine Lucker  
Irene Lucoff  
Shirley Lundquist  
Helen Lungu  
Ruth Lunz  
Dorit Lust  
Ina Luth  
Edith M. Lutz  
Dale Lyons  
Rose Macht  
Harvey and Anita Mackey  
Jim MacLaughlin  
Richard J. Macri  
Eileen Madden  
Nancy Lee Mah  
Ellen Maher  
Bertha J. Major  
Joe and Juanita Malito  
Anne Mangelsdorf  
Jeannette Manion  
Ivan C. Manning  
Menahem Mansoor  
Erich Manzke  
Fred Marcon  
Rose M. Marcum  
Karl H. Marcussen  
Robert Markel  
Preston Marsh  
M. Velia Martinez  
H. E. Mason  
Miriam Mastrapa  
David Mathews  
Virginia Matlock  
Thomas Mattasits  
Stanton B. May  
Jessie Mayer  
David D. Mayfield  
Mr. McCallum  
Alma McClelland  
Elwood McCluskey  
Edna McCormick  
Elizabeth McCoy  
Kay B. McCray  
David McCrery  
Robert McCrery  
Mr. and Mrs. Roscoe McFadden  
W. Robert McFadden  
Ed McGhee  
Marguerite McKirgan  
Allan McKisson  
J. O. McNamee  
Mr. and Mrs. McNutty  
Frank E. Meelhuysen  
Clarence Melvin  
Virginia Mendoza  
Louis E. Merkel  
Helen C. Merrill  
Earl Metzler  
Mr. Lloyd Mickelsen  
Dorothy Millard  
Benjamin Miller  
Florence M. Miller  
Lucile D. Miller  
Mary E. Miller  
Gary A. Mitchell  
Ruth Moffat  
A. R. Mohr  
Neal J. Mol  
Jacqueline Moncrieff  
Gail Moniot  
Irwin N. Moniot  
Billy J. Moore  
Ennis Moore  
Raymond Moore  
Teodora Moore  
Vernon Moore  
Evelyn R. Moran  
Bill Morgan  
Virginia Morgan  
G. Arthur Morrell  
Frank R. Morris  
Grace D. Morris  
Karen Morris

Mildred Morton  
James Mosier  
Gertrude Mossberg  
Claudette Moynihan  
Dorothy Murphy  
Ron and Teri Murphy  
Elouise Murray  
Lois K. Mutch  
Robert Nafziger  
Chan Namtze  
James Nattleton  
Kenneth Nelson  
Maurice Nelson  
Mildred Nelson  
Ruth Nelson  
Sue Nelson  
Thomas D. Nelson  
Frank Nemeth  
L. E. Nesbitt  
Joyce J. Nichols  
George I. Nicholson  
Gary Nickerson  
Grace Niesen  
F. Jay Nimtz  
Harry Nixon  
Jerry L. Nixon  
Philip Nixon  
Robert Nixon  
Alice R. Noah  
Beverly Noble  
Elisabeth Noel  
Elizabeth Nofs  
Catherine Nolan  
Christopher Norborg  
Viola Novicki  
Irene Nuechterlein  
Susan I. Nutt  
G. W. O'Boyle  
Richard P. O'Donnell  
Eleanor R. O'Leary  
Patrick L. O'Neill  
Clara J. O'Rourke  
Joan O'Shea  
Fortuna Odell  
Mr. and Mrs. James Odell  
David C. Ogden  
Derryl Ogden  
Dennis A. Olechna  
Linda Olson  
S. J. Olson  
Kenneth Opgenorth  
Mary Lou Opgenorth  
Robert Osborn  
Ellsworth Osborne  
Marion Ossmann  
Elsie Oster  
Fred M. Ott  
F. J. Otto  
Laurel Otto  
Effie Pampaian  
E. Parker  
A. H. Parkes  
Allen W. Parmenter  
Henry Paskin  
Martha Pasko  
Deforest Patchin  
Deborah A. Patrick  
Martha K. Patrick  
Barbara C. Patton  
Howard Paxson  
Margaret Payne  
Reinhard Pelzer  
Myra Pena  
Mr. and Mrs. George Penner  
Georgia Penner  
L. C. Penney  
Jean Penwell  
Ronald K. Peo  
John G. Perna  
Carolyn Perrine  
Mary Perrine  
Joseph Perry  
Edith Petermann  
Bruce D. Peterson  
Harold Peterson  
Josephine Peterson

Karl W. Peterson  
Kenneth Peterson  
James Phillips  
K. Fernandez Piper  
Mary Jane Pleasants  
Heather Pletcher  
Violetta Plue  
Curt Plummer  
W. Polishuk  
William M. Pollack  
Helen Pollak  
Susan Ponchillia  
Cyril Posnansky  
Brian Potter  
Gordon M. Potter  
F. Norman Pottle  
Barbara Poziwiiko  
Eric L. Pratt  
Harriet N. Preston  
Nancy Price  
Barry L. Prince  
Charles T. Prindeville  
R. Joan Prior  
Mr. and Mrs. Edmund Probst  
Lottie Pugh  
Charles Pumphrey  
Lester M. Quade  
Su Ah Quan  
Robert C. Quillin  
Christine Ramaker  
Doyle W. Ramey  
Reuben Ramkissoon  
William G. Randall  
Ione C. Rapp  
Stella Reagan  
Deborah Reale  
Donald C. Reek  
Stan Reesman  
Linda Regelean  
Clifford Reiber  
Vaughn Reid  
Mary E. Reineke  
R. C. Remboldt  
Walter Renshaw  
Rex Reynolds  
Phyllis D. Rhoads  
David J. Richards, Jr.  
Meg Richman  
Joseph Riederer  
M. Gary Riely  
Kathleen P. Riley  
Bertil Ring  
Gladys Ring  
Dorothy Ringler  
Alberta Ringo  
Kevin Riordan  
Hazel M. Rippey  
Gail A. Ristau  
Bob G. Roberts  
Carolyn Roberts  
Wilma Robinson  
Thomas W. Roby, IV  
Wendy J. Rodewald  
Esther B. Roeder  
Edward Rogers  
Therese Rohan  
Margaret A. Rohn  
James Romine  
John G. Roncz  
Paul J. Rood, Jr.  
Charles M. Rosenberg  
Elliot D. Rosenstock  
John Roske  
D. A. Roth  
Mildred M. Rotherick  
Shirley L. Roti Roti  
D. M. Rowden  
Frederick Royce  
Doris Rubin  
William T. Rudman  
Edward Ruetz  
Verlyn C. Ruger  
John C. Rumely  
David B. Rusk  
Mary Ryman  
Erin M. Salvagione

Julian Samora  
 Priscilla Sanborn  
 Julia Sanburn  
 Violet Sanders  
 Marciano Santiago  
 Willabe Sarber  
 Antonia Sarcona  
 M. H. Saul  
 Kenneth Schaber  
 Katherine Scharf  
 Marcia Ann Scheidt  
 Otto Schletter  
 Norma Schmidt  
 Mrs. Howard J. Schmitt  
 I. C. Schneider  
 Myrtle Schoolcraft  
 Keith N. Schoville  
 Mrs. H. Devon Schrock  
 Janet Schroeder  
 Robin R. Schruz  
 Adela Schultz  
 Richard Schultz  
 N. Helen Schwan  
 Twyla Schwisow  
 Grace A. Scott  
 Herbert Scott  
 Walter Scoy  
 Helena Scutovich  
 Cecilia E. Seabury  
 Allen Seaman  
 Clarence Seel  
 Ruth Segety  
 Vida Semper  
 Vernon Servoss  
 Elizabeth Sexton  
 Marie J. Shable  
 Audrey Shaffer  
 Richard S. Shaffer  
 John Shaul  
 Ken Shenk  
 William D. Shepherd  
 Carla Shier  
 Rose Shook  
 Catherine Shoupe  
 Donald Shriver  
 Thomas Shuck  
 Isabel Shuler  
 Herbert Siekman  
 M. Sierzant  
 Manford Simcock  
 Glen Simkin  
 Larry Simon  
 Parnell C. Simon, Jr.  
 Linda Simpson  
 Ruth Simpson  
 Teri Simpson  
 Patrice Sizer  
 Stephen R. Sizer  
 Jack Sjoquist  
 Xema Skeels  
 Lindtner Skeie  
 Melisande Skillicorn  
 Julius C. Slezak  
 Mary C. Slocum  
 Lois Smart  
 Anne L. Smith  
 Beverly Smith  
 Ethel L. Smith  
 Georgia Smith  
 Ira E. Smith  
 Robert T. Smith  
 Norbert Smolukas  
 Edna J. Sneesby  
 Mr. and Mrs. Leroy Snider  
 Alice E. Snow  
 Robert J. Soucek  
 Jack Sparks  
 William R. Sprague  
 John Spriggs  
 Keith St. Clair  
 Lad Stacy  
 Evelyn Stapley  
 Mr. and Mrs. James Starlin  
 Anna Steele  
 Mrs. E. Steffner  
 Mary Joan Stentz

Kathleen Stephens  
 Francis Stokes  
 Edward Stolberg  
 Evelyn Stone  
 Helen B. Stone  
 Doris Stotz  
 Oliver Stotz  
 Roy Stotz  
 Cecil Stouder  
 Orville Strang  
 Dorothy Stromswold  
 Joanne Strong  
 Della Stroup  
 Lloyd D. Stuckey  
 Lillian Studebaker  
 Mervin Stutzman  
 Charles Sutton  
 Harland Sutton  
 Sylvia Sutton  
 Kathryn Svejda  
 Mary Swartz  
 Shirley Swensen  
 Barbara Swett  
 Linda A. Swinehart  
 Angeline Symonds  
 Anthony C. Szymanski  
 Margaret Szymanski  
 Mr. Takaruk  
 James Talbot  
 Esther Tarangle  
 Cleveland C. Taylor  
 Elizabeth Taylor  
 Mary Beth Taylor  
 Sharon Terrell  
 Helen Thoin  
 Alys Thomas  
 Don Thomas  
 Rosa Thomas  
 C. D. Thrall  
 Mary Ella Thumwood  
 Deborah Thurlow  
 Darla Tillinghast  
 Richard Timmons  
 Lydia Tkachuck  
 James A. Tolhuizen  
 Helena Tolis  
 Walter Tomasch  
 Ruth Tomlinson  
 Judy Toney  
 Glenn D. Toppenberg  
 Janet Toppenberg  
 Beryl Topper  
 Charles W. Torode  
 William B. Tower  
 James G. Towery  
 Mary T. Treanor  
 James Trefz  
 Rosalie Trippy  
 Marlin Troyer  
 Laura C. Truby  
 Donald B. Trull  
 James C. Tsai  
 Robert Tucker  
 Benjamin W. Tudor  
 Charles T. Turner  
 Joshua and Winnie Turner  
 Mable Turner  
 Susan K. Turner  
 Helen Anderson Twite  
 Daniel Ulery  
 Roger Unzicker  
 Mary Letty Upton  
 Robert Upton  
 John A. Valantiejus  
 Mary C. Valleau  
 Margaret Van Amerongen  
 M. Arlene Van Belle  
 H. C. Van Den Hoven  
 Tobi Van Dyck  
 Frances Van Linden  
 Margaret Vance  
 Charles Vanderwoude  
 Michael Vaughn  
 Rowallen E. Vickery  
 Viola M. Viscuso  
 Lope A. Vitangool, Jr.

Voya Vitorovich  
 Elsy Vodnoy  
 Robert Vodnoy  
 Beth A. Vollmer  
 William E. Voor  
 Ruth Voss  
 Stephen Voss  
 Mary Wachholz  
 Gordon V. Wahlen  
 Beatrice M. Walker  
 Eleanor Walker  
 Irene Walker  
 Jere Wallack  
 Glen Walters  
 David Walther  
 Lola Walther  
 Alta Waltos  
 William W. Wampler  
 Charles W. Wang  
 James D. Wang  
 Edna R. Ward  
 Herbert Ward  
 Chauncey E. Warde  
 Byron C. Warkentin  
 Susanne W. Warren  
 Cindy S. Watkins  
 Cynthia Watson  
 R. Watts  
 Florence Wayne  
 Bonnie Wear  
 John H. Weidner  
 Ruth I. Weimann  
 Rachel Weinstein  
 Eugene Weiss  
 Kenneth Wenberg  
 Elsie D. Wendth  
 Pauline Westman  
 Evelyn Westra  
 Wayne Wetzell  
 Carl Wheat  
 George Wheeler  
 Phyllis Whitcomb  
 D. N. White  
 Freda White  
 Petra White  
 Dolores Whitfield  
 Mrs. George Whitfield  
 Eugene Whitlow  
 M. June Whitson  
 Gary Whitworth  
 Allan Widerquist  
 Ruth Wilber  
 James Wilford  
 Richard Wilkinson  
 Charles R. Williams  
 Gladys Williams  
 Jackie Williams  
 Lamaine Williams  
 Mr. and Mrs. Wilmore Williamson  
 Mary Ann Willson  
 Clinton W. Wilson  
 Don L. Wilson  
 Francis Wilson  
 Mary E. Wilson  
 Donald Wimmer  
 Thomas B. Withers  
 Eunice Wolcott  
 Lavern Wolcott  
 Adolph Wolf  
 Arnold Wolf  
 Judy Wolfson  
 Lester M. Wolfson  
 Lawrence Wolske  
 Paul Wolterink  
 Franklin Womack  
 Agnes Wong  
 Katherine Wood  
 Ruth B. Wood  
 Selma Fraas Wood  
 E. E. Woodman  
 Richard H. Worley  
 Clara J. Wright  
 Glenna M. Wright  
 Mildred Wuchenich  
 Charles R. Wurz  
 Reuben L. Yaeger

Mr. and Mrs. Hugh Yarbro  
 Irene Yoder  
 Mrs. L. K. Yoder  
 Leon York  
 Lola Yost  
 Karolina Ziebart  
 Walter C. Zielke  
 Ray Zimmerman  
 Kathleen Zolber  
 Beecher Zollinger  
 Freda Zollinger  
 Mary Zondervan

## Foundations

The foundations and special trusts listed below have made commitments to Andrews University during the 1981-82 fiscal period. A foundation grant to an educational institution is more than a gift to a facility or program. It is also a public endorsement of the institution's leadership and educational program that is universally respected by other foundations, corporations and individuals. Foundation support of the university has been important to the university's past development and is extremely important to its future growth.

American Hospital Supply Corp. Found.  
 Berrien Community Foundation  
 Exxon Education Foundation  
 Ford Motor Co. Foundation  
 Gulf + Western Foundation  
 Herrick Foundation  
 Johnson Controls Foundation  
 Kresge Foundation  
 Miles Laboratories Foundation  
 Near East Institute and Archaeology Foundation  
 PPG Industrial Foundation



The Presser Foundation  
Rapids-Standard Foundation  
Sage Foundation  
Sears-Roebuck Foundation  
The Flour Foundation  
Vern and Barbara J. Carner Foundation  
Whirlpool Foundation

---

### Matching Gifts

In addition to providing voluntary gifts for higher education, many companies participate in matching gift programs which double or triple an employee's gift to a university or college. Contributors may want to see if their employer is a participant of this program thus multiplying the impact of their gift to Andrews University.

During 1981-82 the following companies matched gifts to Andrews University.

Abbott Laboratories  
American Hospital Supply Corp. Found.  
American Motors Corporation  
Bendix Corporation  
Boeing Company  
Chrysler Corporation  
Clark Equipment Company  
Continental Can Company, Inc.  
Dow Chemical Company  
Dow Corning Corporation  
Eaton Corporation  
Exxon Foundation  
The Fluor Foundation  
Ford Motor Company Fund  
Gulf + Western Foundation  
IBM Corporation  
Johnson Controls Foundation  
Ovaltine Products, Inc.  
Peoples Gas Company (Midcon Corp.)  
The Torrington Company  
Tyler Refrigeration Corporation  
Whirlpool Foundation

---

### Corporations/Businesses

Corporations and businesses, both local and distant, provide an important part of the university's capital and annual gift support program. In doing so, they return to society a measure of the benefits they have received. The university expresses sincere appreciation for their support during 1981-82.

A-1 Travel Inc.  
A. B. Dick Products  
Abbott Laboratories  
Ace Hardware  
Advanced Sheet Metal  
Alla-Motive  
American Cassette Ministries  
American Motors Corp.  
Anderson Speech and Hearing  
Andrews University Airpark  
Andrews University Bookstore  
Apple Valley Market  
The Art Mosaic and Tile Co.  
Atlas Restaurant Supply  
Aval Mold and Die Co.  
Baker Bookhouse Christian Bookstore  
Banner Rentals  
Bell-Molhoek Insurance  
Bendix Corp.  
Blossomland Flower Shop  
The Boeing Company  
Bon Appetit Restaurant  
Bouquet Flower Shop  
Chrysler Corp.  
Clark Equipment Co.  
Clark Federal Credit Union  
Clayton McCoy Inc.

Continental Group  
Copp Music Center  
Countryside Nursing Home  
Dairy Queen of St. Joseph  
Dow Chemical Co.  
East Bank Emporium Restaurant  
Eaton Corp.  
Eau Claire Lumber Co.  
Eliason Corp.  
Erasmus Books  
Erhard Furniture  
Flower Loft  
Food Specialties Service Corp.  
Glenlord Home Center  
Grootendorst Nurseries  
Hamel Music Co.  
Heritage Bank  
IBM Corp.  
J W Werntz and Son Inc.  
Kachelstove  
Walt Korfmacher Insurance Agency  
Lamon Distributors, Inc.  
Makielski Incorporated  
McDonald Chiropractic Clinic  
McDougal Bros. Logging  
McKee Baking Co.  
Melendez South-of-the-Border Imports  
Michigan Colleges FDN  
Michiana ABC Book Center  
Natural Gas Pipeline Co.  
Niles Contract Co.  
Nuechterlein Camera Shop  
1-0-1 Car Clinic  
Ovaltine Products  
People's State Bank  
Pittsburgh Paints  
Poole Construction Co.  
Radio Shack  
Research Corp.  
Rose Fuel and Materials  
R/S Insurance, Rutz-Smith Agency  
Schrader's Market  
Sherwin Williams Co.  
Simon Brothers Inc.  
Slowik Refrigeration  
Ther-N-Bak Travel  
Thomas Market and Health Foods  
Torrington Co.  
Trade Lines Shopper's Guide  
Twixwood Nursery  
Tyler Refrigeration  
University Printers  
The Upjohn Co.  
Wharton Associates  
Whirlpool Corp.  
Williams Bros. Paper Box  
Williams and Co. Quality Jewelers  
Wilson-Collier True Value Hardware  
Wolverine Metal Stamping  
Woolf Aircraft Products  
Yeske's Appliances

---

### Michigan Colleges Foundation

Since its founding in 1949, Michigan Colleges Foundation has raised more than 25 million dollars from corporations to be used for the support of 16 private colleges and universities in the state of Michigan. Andrews University has received a proportionate share of these gifts and expresses sincere thanks and gratitude to those supporting corporations. Listed are those who supported Michigan Colleges Foundation and Andrews University during 1981-82.

#### Adrian

Boron Oil Company

#### Allegan

Crescent Machine and Nipple Company  
DeLano Service, Inc.  
Electro-Heat, Inc.  
L. Perrigo Company

Trueheat Corporation  
Rockwell International,  
Universal Joint Operation

#### Alma

Sealed Power Corporation  
Total Petroleum, Inc.

#### Alpena

Alpena Power Company  
Alpena Savings Bank  
Alpena Wholesale Grocer Company  
Gilliland Construction Company  
Magnaloy Coupling Co. Div.  
Douville-Johnson Corporation  
Panel Processing, Inc.  
Peoples Bank and Trust  
C. F. Reitz and Company  
R. A. Townsend Company

#### Ann Arbor

Ann Arbor News  
BG Services, Division ITT  
Braun-Brumfield, Inc.  
Climax Molybdenum Co. of Michigan  
(Amax Foundation, Inc.)  
DeVine, DeVine and Serr  
Mr. and Mrs. John S. Dobson  
William T. Dobson  
Hoover Universal, Inc.  
Industrial Tectonics, Inc.  
Keith D. Jensen  
Elizabeth E. Kennedy Fund  
Malloy Lithographing, Inc.  
Michigan National Bank  
National Bank and Trust Company  
of Ann Arbor  
The Power Foundation  
Sarns, Inc.  
Townsend and Bottum, Inc.  
University Microfilms International

#### Battle Creek

American National Bank  
Archway Cookies, Inc.  
Atlas Sales, Inc.  
B & R Lettershop  
Barker Manufacturing Company  
Battle Creek Equipment Company  
Battle Creek Gas Company  
Boron Oil Company  
Braund Manufacturing  
Clark Equipment Company  
Dare Products, Inc.  
Eaton Corporation  
Enquirer and News, Federated  
Publications, Inc.  
Federal Home Companies  
Galloup Pipe and Supply Company  
General Foods Corporation—  
Post Cereal Division  
Great Lakes Federal Savings and Loan  
H & H Engineering  
Kellogg Company  
W. K. Kellogg Foundation  
Keyes-Davis Company  
Michigan Broadcasting Company  
WBCK  
Michigan National Bank  
The Miller Foundation  
Motor Shop Electrical Construction  
Company  
Norman's, Inc.  
People's Savings and Loan Association  
Refuse Service, Inc.  
Union Pump Company  
United Steel and Wire Company  
Wolverine Insurance Company

#### Bay City

Bay City Times  
Boron Oil Company  
Wm. H. Boutell Company  
Evenknit Hosiery, Inc.  
James E. Falvey  
H. Hirschfield Sons Company  
Laine Appold and Company

Lakehead Pipe Line Company, Inc.  
Manufacturers National Bank of Bay City  
Monitor Sugar Company  
Mutual Savings and Loan Association  
Newcor, Inc.  
Northern Supply Company  
Peerless Foundry Company  
Peoples National Bank and Trust  
Company of Bay City  
RWC, Inc.  
Rowley Brothers, Inc.  
Second National Bank of Bay City  
Ultra Carbon Corporation  
H. C. Weber Construction Company  
Weinlander, Fitzhugh, Bertuleit and  
Schairer, P. C.  
James V. White  
Jim White Lumber Sales  
Wolverine Knitting Mills

#### Benton Harbor

Alberts Insurance Agency, Inc.  
BG Services, Division ITT  
Barentsen Candy Company  
Benton Harbor Engineering Division  
(Koehring Foundation)  
Brammell Supply Company  
Burch Printers, Inc.  
Clark Equipment Company  
Continental Baking Co., Division ITT  
Farmers and Merchants National Bank  
Gast Manufacturing Corporation  
Heath Company  
Indiana and Michigan Electric Company  
Inter-City Bank  
Martin Bros. Mill and Foundry Supply  
Company  
Michigan Fruit Cannery, A Division  
of Curtice-Burns, Inc.  
Motion Industries, Inc.  
Modar, Inc.  
Netedu Company Div.  
Electrographic Corp.  
Palladium Publishing Company  
(The Herald-Palladium)  
Pearson Construction Company, Inc.  
Pearson-McColl Company  
Quality Packaging Products, Inc.  
Saluto Food Corporation  
Southern Michigan Cold Storage  
Company  
Whirlpool Foundation and Corporation

#### Bridgeport

Dixie Tool Industries, Lear Siegler, Inc.  
Executone of N. E. Michigan  
I. T. I.

#### Brightman

Pemco Die Casting Corporation

#### Brighton

Michigan Bank—Livingston

#### Bronson

The Scott and Fetzer Foundation  
(Douglas Division)

#### Buchanan

Clark Equipment Company

#### Burton

Michigan National Bank—Mid Michigan

#### Cadillac

Kysor Industrial Corporation Foundation

#### Cassopolis

Michigan National Bank—Michiana

#### Charlotte

Michigan National Bank

#### Cheboygan

WPBN-TV & WTOM-TV, Inc.

#### Coldwater

Amax Specialty Metals Corp.  
Coldwater Cablevision, Inc.

Holbrook-Patterson, Inc.  
 Dorothy A. Legg  
 Quality Spring Products  
 Div. Kuhlman Corporation  
 Southern Michigan National Bank  
 of Coldwater

**Coloma**  
 State Bank of Coloma

**Coopersville**  
 Newway Pneumatics, Lear Siegler, Inc.

**Corunna**  
 F & E Manufacturing Company

**Detroit Metropolitan Area**  
 ACCO Industries, Inc.,  
 Chain Conveyor Division  
 Acme Abrasive Company  
 Acme Mills Company  
 Acorn Building Components, Inc.  
 Advance Mortgage Corporation, Ltd.  
 Ajax Rolled Ring Company  
 Alexander and Alexander of Michigan,  
 Inc., DIA Division  
 Allegheny Ludlum Steel Corporation  
 Allen Automated Systems Company  
 Allstate Insurance Company  
 Allied Chemical Corporation  
 Alsar, Inc.  
 American Aggregates Corporation  
 American Airlines  
 American Electric Div. ITT  
 American Motors Corporation  
 American Natural Resources Company  
 Anonymous  
 ANR Storage Company  
 Answering Service, Inc.  
 Approved Manufacturing Company, Inc.  
 The Archer-Reed Company  
 Arco Alloys Corporation  
 Arthur Andersen and Company  
 AT & T Long Lines  
 George W. Auch Company  
 Auto Club Insurance Association  
 Automotive Electrical Products  
 Division ITT  
 Automotive Pattern Company  
 (Acme-Cleveland Foundation)  
 Automotive Products Div.,  
 Allied Chemical Corporation  
 Awrey Bakeries, Inc.  
 Axis Precision Industries, Inc.  
 B/W Controls, Inc.  
 Lois W. Bachman  
 Frank Bancroft Company, Inc.  
 Bank of Commerce—Hamtramck  
 Banner Laundering Company  
 James T. Barnes and Company  
 Barton-Malow Company  
 The Bendix Corporation  
 Beneficial Finance Co. of Michigan  
 Berg-Powell Steel Company  
 Bigelow-Liptak Corporation  
 Borden Dairy and Services,  
 Div. of Borden, Inc.  
 Boron Oil Company  
 J. Brodie and Son, Inc.  
 Brooks and Perkins, Inc.  
 Bundy Foundation  
 Leo Burnett Co. of Michigan, Inc.  
 Clarence M. Burton Memorial Foundation  
 CPA Insurance Company  
 Cadillac Fence and Supply Company  
 Cadillac Glass Company  
 Cadillac Gage Co., Div.  
 Ex-Cell-O Corporation  
 Campbell-Ewald Company  
 Robert G. Campbell  
 Cannon Electric Division ITT  
 Cargill Detroit Corporation  
 Carhartt, Inc.  
 Carlson Brothers Company  
 John V. Carr and Son, Inc.  
 CECO Publishing Company  
 Central Quality Services Corporation

Century 21 of Michigan, Inc., Realtors  
 Clarence Chamberlin Estate  
 The Clarence and Grace Chamberlin  
 Foundation  
 Mrs. Grace A. Chamberlin  
 Champion Spark Plug Company  
 Chemcentral/Detroit  
 Chrysler Corporation Fund  
 City Building Maintenance Company  
 City Metals Refining, Inc.  
 City National Bank—Detroit  
 Clarkliff of Detroit, Inc.  
 Cleaners Hanger Company  
 Cleveland Twist Drill  
 Cogsdill Tool Products, Inc.  
 Cold Heading Company  
 Cole Carbide Industries, Inc.  
 Colt Industries, Holley Special  
 Products Division  
 Comerica Incorporated  
 (Detroit Bank & Trust Co.)  
 Communications Systems  
 Div., ITT  
 Comtel Corporation  
 Continental Baking Co., Div. ITT  
 Continental Financial  
 Services Company  
 Contractors Steel Company  
 Cook Industrial Coatings, Inc.  
 The Coon-DeVisser Company  
 Cooney Engineering Company  
 The J. Lewis Cooper Company  
 Coopers and Lybrand  
 Copper and Brass Sales, Inc.  
 Core Industries, Inc.  
 Corporate Service, Inc.  
 Corver Engineering Company  
 Courier Terminal Systems, Div. ITT  
 The Cross and Trecker Foundation  
 Crowley, Milner and Company  
 Currie Associates, Inc.  
 Cyclops Corporation, Detroit  
 Strip Division  
 D & F Corporation  
 R. E. Dailey and Company  
 Darin and Armstrong, Inc.  
 Davis Tool and Engineering Company  
 Dearborn Bank and Trust Company  
 Dearborn Stamping Company  
 DeLuxe Check Printers Foundation  
 Depor Industries, Inc.  
 R. L. Deppmann Company  
 DE-STA-CO Division, Dover Corporation  
 Detrex Chemical Industries, Inc.  
 Detroit Ball Bearing Company  
 Detroit Coil Company  
 Detroit Edison  
 Detroit Electric Furnace Div.,  
 Kuhlman Corporation  
 Detroit News (The Evening News  
 Association)  
 Detroit Pump and Manufacturing  
 Company  
 Detroit Tap and Tool Company  
 The Charles B. and Charles R. DeVlieg  
 Foundation and DeVlieg Machine  
 Company  
 Diehl and Diehl Architects, Inc.  
 Difco Laboratories  
 J. McGregor Dodds  
 Dongan Electric Manufacturing  
 Company  
 Douglas and Lomason Company  
 Down River Federal Savings and  
 Loan Association  
 Dunbar and Sullivan Dredging Company  
 Dura Corporation  
 E & E Engineering, Inc.  
 Eastern Box Company  
 Eaton Corporation  
 H. D. Edwards and Company  
 Efficient Engineering Co., Inc.  
 Engineered Heat Treat, Inc.  
 Enterprise Oil and Gas Company  
 Eonic, Inc.  
 Equipment Manufacturing, Inc.

Ernst and Whinney  
 A. J. Etkin Construction Company  
 Etkin, Johnson & Korb, Inc.  
 Ex-Cell-O Corporation  
 Fabricon Products Div., Eagle-Picher  
 Industries, Inc.  
 Richard W. Fairgrieve  
 J. N. Fauver Company, Inc.  
 Faygo Beverages, Inc.  
 Federal-Mogul Corporation  
 Federal Screw Works Foundation, Inc.  
 Ferndale Fastener Div.,  
 Ring Screw Works  
 Ferro Manufacturing Corporation  
 Financial Guardian, Inc.  
 Firestone Steel Products Company  
 First Federal of Michigan  
 First of Michigan Corporation  
 Fisher Corporation  
 Fitzsimons Manufacturing Company  
 Flint Ink Corporation  
 Ford Motor Company  
 Mr. and Mrs. Howard R. Fordree  
 Frank's Nursery and Crafts, Inc.  
 Frigid Food Products, Inc.  
 Frito-Lay, Inc.  
 Fruehauf Corporation  
 Four Brothers Company  
 Fuller Tool Company  
 Future Products Tool Corporation  
 Gallagher-Kaiser Corporation  
 The Gehring Corporation  
 General Controls Div., ITT  
 General Die Casting Company  
 General Motors Corporation  
 General Safety Corporation  
 General Tire and Rubber Company  
 Charles Gilson  
 Glendale Foods, Inc.  
 Gollnick Tool Company  
 Goodyear Tire and Rubber Company  
 Fund  
 Mr. and Mrs. Lewis Goral  
 The Gornick Fund  
 Gorno Steel and Processing Company  
 Grant-Southern Iron and Metal Company  
 Great Lakes Gas Transmission  
 Company  
 Great Lakes Steel Division,  
 National Steel Corporation  
 John E. Green Plumbing and Heating  
 Co., Inc.  
 Grinnell Div., ITT  
 Guardian Industries Corporation  
 Gulf + Western Manufacturing  
 Company—Bohn Group and General  
 Industries Group  
 The HMS Company  
 HMS Mini-Storage Company  
 HMS Products Company  
 Jack Haines Company  
 Hall Industries Corporation  
 Frank B. Hall and Company of Michigan  
 Harley Ellington Pierce Yee Associates  
 Austin Harmon  
 Morton E. Harris  
 Harrison Piping Supply  
 Company  
 Hawthorne Metal Products  
 Company  
 Sheldon G. Hayes Foundation  
 Helm, Inc.  
 Higbie Manufacturing, Div. ITT  
 Hill, Lewis, Adams, Goodrich and Tait  
 Hillside Tool and Die Company  
 Hiram Walker and Sons, Inc.  
 Hoban and Company  
 Holley Manufacturing Company  
 The Holley Foundation  
 Homestead Acceptance Corporation  
 Mr. and Mrs. Joseph Hoppinthal  
 Howard Plating Industries, Inc.  
 Huck Manufacturing Company  
 The J. L. Hudson Company  
 Illinois/Eclipse (Illinois Tool  
 Works Foundation)

Indian Head Foundation  
 Industrial Chemical Division Allied  
 Chemical Corporation  
 Industrial Credit Company, Div., ITT  
 Industrial Fuels Corporation  
 Inland Steel Company  
 Inmont Corporation  
 InRyCo, Inc.  
 Insurance Management Corporation  
 Inter-City Trucking Service, Inc.  
 International Business Machines  
 Corporation  
 International Extrusions, Inc.  
 ITT Life Insurance Corporation  
 ITT North American Automotive Group  
 M. Jacob and Sons  
 Jones and Laughlin Steel Corporation  
 Mark Jung  
 K mart Corporation  
 Albert Kahn Associates, Inc.  
 Kasle Steel Corporation  
 Kasper Machine Company  
 Kaufmann Window and Door Corporation  
 Kelly Services  
 Kelsey-Hayes Company  
 Kennametal, Inc.  
 The Kent-Moore Foundation  
 Knight Foundation  
 Kowalski Sausage Company, Inc.  
 Kraft Foods Division Kraft, Inc.  
 Kuhlman Corporation  
 James H. Kurtz Steel Company  
 Kux Manufacturing Company  
 L. M. Gear Company  
 LOF Plastics, Inc.  
 F. Jos. Lamb Company  
 Lang Heenan and Company  
 LaSalle Machine Tool Company  
 Lastar Electric Company  
 Lawyers Title Insurance Corporation  
 Lear Siegler, Inc., Commercial  
 Products Group  
 Lear Siegler, Inc., General Seating  
 Division  
 Lear Siegler, Inc., Metal Products  
 Sherwood Plant Division  
 Lear Siegler, Inc., National Broach  
 and Machine Division  
 Lear Siegler, Inc., National Twist  
 Drill and Tool Division  
 Lear Siegler, Inc., No Sag Spring  
 Division  
 Lear Siegler, Inc., Progress Pattern  
 Division  
 The Life Insurance Co. of Virginia  
 Carlton R. Lindell  
 Mr. and Mrs. Russell H. Lucas  
 Leona G. Lyon  
 Mac Valves, Inc.  
 Maccabees Mutual Life Insurance  
 Company  
 Milton K. Mahler  
 The R. C. Mahon Foundation  
 Manufacturers Hanover Mortgage  
 Corporation  
 Manufacturers National Bank of Detroit  
 Marathon Oil Company  
 Marsh and McLennan, Inc.  
 Martin Marietta Corporation  
 Masco Corporation  
 Maxitrol Company  
 Mayfair Plastics, Inc.  
 Tom McGuane Industries  
 McNaughton-McKay Electric Company  
 Mechanical Heat and Cold, Inc.  
 Meier Brass and Aluminum Div.  
 Kuhlman Corporation  
 Mercier Corporation  
 Merck Chemical Division  
 Metallurgical Processing Company  
 Metro Containers Div. Kraft, Inc.  
 Michigan Bell Telephone Company  
 Michigan Consolidated Gas Company  
 Michigan Life Insurance Company  
 Michigan Mutual Insurance Company  
 Michigan National Bank—Dearborn

Michigan National Bank—Detroit  
 Michigan National Bank—Farmington  
 Michigan National Bank—Grosse Pointes  
 Michigan National Bank—Macomb  
 Michigan National Bank—North Metro  
 Michigan National Bank—Oakland  
 Michigan National Bank—South Metro  
 Michigan National Bank—Sterling  
 Michigan National Bank—West Metro  
 Michigan National Bank—West Oakland  
 Michigan Seamless Tube Div.  
 Quanex Corporation  
 Michigan Tractor and Machinery  
 Company  
 Michigan Wisconsin Pipe Line Company  
 Minnesota Mining and Manufacturing  
 Company  
 Modco Tools  
 The H. A. Montgomery Co., Inc.  
 E. J. Moore  
 Motion Industries, Inc.  
 Motor Wheel Corporation  
 C. A. Muer Corporation  
 Mutual of Detroit Insurance Company  
 National Acme  
 National Bank of Detroit  
 National Bank Wyandotte-Taylor  
 National-Ben Franklin Insurance  
 Company  
 National Casualty Company  
 National Gypsum Company, Cement  
 Division  
 National Time and Signal Corporation  
 Newcor, Inc.  
 New York Life Insurance Company  
 Ernest L. Nicolay Family Foundation  
 C. S. Ohm Manufacturing Company  
 PPG Industries Foundation  
 Packaging Systems, Div. Ex-Cell-O  
 Corporation  
 Charles A. Parcels, Jr.  
 Park Chemical Company  
 Parke, Davis and Company  
 Parker-Hannifin Corporation  
 (Parker-Hannifin Foundation)  
 Parker, Wittus and Company  
 Peat, Marwick, Mitchell and Company  
 Peerless Cement Company  
 Pegasus Division (Koehring Foundation)  
 Peninsular Diesel, Inc.  
 Peninsular Steel Company  
 J. C. Penney Company, Inc.  
 Peoples Federal Savings and Loan  
 Association  
 Peoples State Bank of Hamtramck  
 Pepsi-Cola Bottling Group  
 Perfection Pattern and Manufacturing  
 Company  
 Perrin Fordree and Company, P.C.  
 Wm. Lyon Phelps Foundation  
 Thomas W. Pinney  
 Plante and Moran  
 Dale L. Prentice Company  
 Pressure Vessel Service, Inc.,  
 Detroit Chemical Works Division  
 Prew-McBride  
 Price Waterhouse and Company  
 Proctor Homer Warren, Inc.  
 Progressive Stamping Co., Inc.  
 Prudential Insurance Company  
 of America  
 Putnam Tool Division TRW, Inc.  
 Quality Steel Pickling and  
 Processing, Inc.  
 Reardon-Parshall Company  
 Reaume and Dodds Realtors  
 Reef-Baker Corporation  
 Reliance Insurance Companies  
 Republic Automotive Parts, Inc.  
 Republic Steel Corporation  
 Reynolds Metals Company  
 Rim and Wheel Service Company  
 Ring Screw Works  
 Rockwell International Automotive  
 Group  
 Irving Rose

Leslie Rose  
 Ross Roy  
 Ross Roy, Inc.  
 Ross Structural Steel, Inc.  
 Rotary Manifold Forms Division  
 Royal Design and Manufacturing, Inc.  
 Royal Wire Division Walker Wire  
 and Steel Company  
 Joseph T. Ryerson and Son, Inc.  
 SEC Computer Company  
 Safran Printing Company  
 Frank D. Saylor and Son, Inc.  
 R. P. Scherer Corporation  
 Samuel Schiff  
 Sealtest Foods Division, Kraft, Inc.  
 Security Bank and Trust Company,  
 Southgate  
 Semi Conductors, Division ITT  
 Semet-Solvay Division Allied  
 Chemical Corporation  
 Servall Company  
 A. Z. Shmina and Sons Company  
 Simons-Michelson Trust Fund,  
 United Jewish Charities  
 The Skillman Foundation  
 George M. and Mable H. Slocum  
 Foundation  
 Smith, Hinchman and Grylls  
 Associates, Inc.  
 Snyder Corporation  
 Sperry and Hutchinson Company  
 Sperry Vickers Division Sperry  
 Rand Corporation  
 Standard Detroit Paint Company  
 Standard Detroit Realty Company  
 Standard Federal Savings and Loan,  
 Troy  
 The State Savings Bank,  
 South Lyon  
 F. D. Stella Products Company  
 Mr. and Mrs. F. D. Stella  
 The Edward C. and Hazel L.  
 Stephenson Foundation  
 Sterling Supply Company  
 Stonisch Foundation  
 Stouffer Foods Corporation Fund  
 The Stroh Brewery Company  
 Suburban Boring Company  
 Superior Products Company  
 Surety Federal Savings and Loan  
 Association, Southfield  
 Richard Swiney  
 TRW Michigan Division TRW, Inc.  
 Mrs. Robert A. Taggart  
 Taylor and Gaskin, Inc.  
 Technical Industries, Inc.  
 Terryphone Corporation,  
 Division ITT  
 Thermotech, Inc., Division ITT  
 Thompson Industries, Division ITT  
 Tool and Abrasive Products, Division  
 Ex-Cell-O Corporation  
 Total Petroleum, Inc.  
 Touche, Ross and Company  
 UOP Wolverine Division  
 The UPS Foundation, Inc.  
 Ultimate Precision, Inc.  
 The Union Paper Company of  
 Michigan, Inc.  
 Unistrut Corporation  
 United Brass Manufacturers, Inc.  
 United Greenfield Division,  
 TRW, Inc.  
 United Plastics, Division ITT  
 United Industrial Engineering  
 Corporation  
 United Steel Supply Company  
 United Technologies, Automotive  
 Products Div. (Essex Group, Inc.)  
 The Valeron Corporation  
 Visual Arts  
 Vulcan Mold and Iron Company  
 Walcon Corporation  
 Walker Wire and Steel Company  
 Warren Bank  
 Washers, Inc.

Wayne Oakland Bank Trust  
 Jervis B. Webb Company  
 Eloise and Richard Webber Foundation  
 Western Electric Fund  
 The Westward Company  
 Whitman and Barnes, a United  
 Greenfield Div. of TRW, Inc.  
 The Wickman Corporation  
 Willens + Michigan  
 Ralph C. Wilson Agency, Inc.  
 Wineman Foundation  
 Winkelman Brothers Apparel  
 Foundation  
 Wolf Detroit Envelope Company  
 Wolverine Fabricating and  
 Manufacturing Company  
 N. A. Woodworth Company  
 World Communications, Division ITT  
 Wyandotte Savings Bank  
 The Wyatt Company  
 W. Tom ZurSchmiede Foundation

#### **Eaton Rapids**

Mitchell P. Hulst

#### **Eau Claire**

Kolberg Foundation, Inc.

#### **Essexville**

Aetna Cement Corporation  
 The Stalker Corporation

#### **Fenton**

Fenton Heading Division, Ring  
 Screw Works

#### **Ferrysburg**

C-Way Construction Company  
 Johnston Boiler Company  
 Verplank's Coal and Dock Company

#### **Flint**

Allen Storage and Moving Company  
 J. Austin Oil Company of Flint, Inc.  
 A. G. Bishop Charitable Trust  
 Bill Carr Signs, Inc.  
 The Catsman Foundation, Inc.  
 The Christman Company  
 Citizens Commercial and Savings Bank  
 Dee Cramer, Inc.  
 Dow Insurance Agency, Inc.  
 (Francis B. Dow Trust)  
 Engineered Products Company  
 First Federal of Flint  
 Flint Journal  
 Flint Sausage Works, Inc.  
 Genesee Tool and Engineering, Inc.  
 Genesee Welding Supply, Inc.  
 Sanders Goodstein  
 Kasle Brothers, Inc.  
 Koegel Meats (Arna Paulina  
 Foundation)  
 Kurtz Gravel Company  
 Laro Coal and Iron Company  
 McDonald Dairy Company  
 Michigan National Bank  
 Motion Industries, Inc.  
 Charles Stewart Mott Foundation  
 Charles S. Neithercut Charitable Trust  
 Newkirk Electric Associates, Inc.  
 Northern Supply Company  
 Peerless Mattress and Furniture  
 Company  
 Perry Printing Company  
 John L. Riegle, Jr.  
 The Riegle Press  
 Shively Bros., Inc.  
 Harold Smith, Inc.  
 Super "K" Industries, Inc.  
 Superior Pontiac-Cadillac, Inc.  
 Western Steel Company

#### **Frankenmuth**

Bronner's Family CHRISTmas  
 Wonderland  
 Frankenmuth Bank and Trust  
 Frankenmuth Bavarian Inn, Inc.  
 Frankenmuth Mutual Insurance Company

Zehnder's, Inc.

#### **Fremont**

Gerber Baby Foods Fund

#### **Gladwin**

Gladwin Machine Products

#### **Grand Haven**

ACEMCO  
 Atcoflex, Inc.  
 Automatic Spring Products Corporation  
 B & B Design, Inc.  
 Bastian-Blessing Food Service  
 Equipment Co.  
 Carlton Meter Company  
 John C. Carlyle, A Professional  
 Corporation  
 Centron Data Services Company  
 Challenge Machinery Company  
 Cooper Air Tools, Gardner-Denver  
 DOTCO  
 Dake  
 Electrical Assemblies, Inc.  
 Grand Haven Brass Foundry  
 Grand Haven Stamped Products  
 Company  
 Grand Haven Steel Products  
 Grand Transformers, Inc.  
 Great Lakes Design, Inc.  
 Harbor Industries, Inc.  
 Heyboer Transformers  
 Edward and Elizabeth Hofma Trust  
 JSJ Corporation  
 The Loutit Foundation  
 Manting Equipment Company  
 Michigan Plastic Products, Inc.  
 Oakes-Dornbos-Crimmins, Inc.  
 Pacesetter Bank and Trust  
 Company—West  
 Peel Brothers, Inc.  
 Peoples Bank and Trust Company  
 Pippel-Patterson Printers  
 Polyply, Inc.  
 Screw Machine Specialties, Inc.  
 Shape Corporation  
 Weyburn-Bartel, USA (Kennecott)

#### **Grand Rapids**

AGM Industries, Inc.  
 Adac Plastic, Inc.  
 Advance Packaging Corporation  
 Ajacs Die Sales Corporation  
 Alocs Manufacturing Company  
 American Seating Company  
 Arthur Andersen and Company  
 B & B Beer Distributing Company  
 Baker Book House  
 Barclay, Ayers and Bertsch Company  
 Barnes Construction Company, Inc.  
 Behler-Young Company  
 Bergsma Furniture  
 Bissell Graphics Division  
 Bissell, Inc.  
 Booth Newspapers, Inc.  
 (Samuel I. Newhouse Foundation)  
 The Bouma Corporation  
 Joe Brown and Sons  
 John K. Burch Company  
 Buys-MacGregor-MacNaughton-  
 Greenawalt and Company  
 Canteen Service Company  
 Carboneau Industries  
 Carpenter Paper Company  
 Cascade Engineering  
 Catherine's Stout Shoppe  
 Chemcentral/Grand Rapids  
 Clipper Belt Lacer Company  
 Columbian Storage and Transfer  
 Company  
 Mr. and Mrs. E. M. Conway  
 Corduroy Rubber Company  
 Country Fresh, Inc.  
 H. H. Cutler Company  
 Davenport Associates, Inc.  
 DeGraaf and Buiten Agency, Inc.  
 DeLuxe Check Printers, Inc.

Dexter Lock Division, Kysor Industrial Corporation  
 Douglas Brothers, Inc.  
 Dover Corporation/Blackmer Pump Division  
 Eastern Floral and Gift Shop  
 Eberhard Foods, Inc.  
 Wm. B. Eerdmans Publishing Company  
 Andy J. Egan Company, Inc.  
 H. Eikenhouth and Sons, Inc.  
 Elston-Richards Storage Company  
 Ernst and Whinney  
 Etheridge Company  
 Fasteners, Inc.  
 Foremost Corporation of America  
 Fox Jewelry Company, Inc.  
 Henry A. Fox Sales Company, Inc.  
 G & T Industries, Inc.  
 Gallmeyer and Livingston Company  
 Daniel and Lynn Gantos  
 Gantos, Inc.  
 P. B. Gast and Sons Company  
 Gezon Motors, Inc.  
 Gordon Food Service, Inc.  
 Grand Rapids Alloys, Inc.  
 Grand Rapids Label Company  
 Grand Rapids Mutual Federal Savings and Loan Association  
 Grand Rapids Press  
 Grand Rapids Steel and Supply Company  
 Guardsman Chemicals, Inc.  
 Gulf + Western Manufacturing Company  
 Hager Family Foundation  
 John D. Hanink  
 Hartger and Willard Mortgage Associates, Inc.  
 Herp's (Allied Stores of Michigan)  
 Holland-American Wafer Company  
 W. W. Irwin  
 Kaminga Manufacturing Company  
 Keebler Company/Grand Rapids Bakery  
 Kindel Furniture Company  
 John E. King, Jr.  
 Klise Manufacturing Company  
 Knape and Vogt Manufacturing Company  
 Mr. and Mrs. Frederick E. Lawrence  
 Lear Siegler, Inc.—Instrument Division  
 Leedy Manufacturing Company  
 Leitelt Iron Works  
 Light Metals Corporation (Wyoming)  
 Mackay Foundry Sales, Inc.  
 Mazda Distributors Great Lakes  
 McInerney Spring and Wire Company  
 Meijer Supermarkets, Inc.  
 Michigan Colprovia Company  
 Michigan Fleet Equipment, Division, Kysor Industrial Corporation  
 Michigan Lithographing Company  
 Michigan National Bank—Central  
 Michigan National Bank—Wyoming  
 Michigan Wheel Company  
 Monarch Road Machinery Company  
 S. A. Morman and Company  
 Motion Industries, Inc.  
 Mutual Home Federal Savings and Loan Association  
 Newkirk Electric Associates, Inc.  
 Old Kent Bank and Trust Company  
 Ottawa Steel and Manufacturing Company, Inc.  
 Owen-Ames-Kimball Company  
 Packaging Corporation of America  
 Performance Seating Materials, Inc.  
 Ply-Curves, Inc.  
 Burke E. Porter Machinery Company  
 Pridgeon and Clay, Inc.  
 Purity Cylinder Gases, Inc.  
 Raniville Company  
 The Rapids-Standard Foundation  
 Riverside Sand and Gravel Company  
 Roskam Baking Company  
 Rospatch Corporation  
 Sackner Products, Inc.  
 (Bemis Company Foundation)  
 Seidman and Seidman  
 Somerville Technical Services

Robert B. Somerville  
 A. J. Sparks and Company  
 Sparks Belting Company  
 Spartan Stores, Inc.  
 Spring Air Mattress Company  
 Star Truck Rentals, Inc.  
 Steelcase, Inc.  
 Paul Steketee and Sons Company  
 Stephenson and Lawyer, Inc.  
 Stow/Davis Furniture Company  
 Technical Systems, Inc.  
 Terryphone Corporation, Division ITT  
 Time-Life Broadcast, Inc.—WOTV  
 Ton-Tex Corporation  
 Union Bank and Trust, N.A.  
 The Wege Foundation  
 Werner Lehara, Inc.  
 West Side Federal Savings and Loan Association

Hastings Manufacturing Company  
 Hastings Mutual Insurance Company  
 National Bank of Hastings

**Holland**

Hart and Cooley Manufacturing Company  
 Holland Transplanter Company  
 Lear Siegler, Inc.—Home Division  
 Louis Padnos Iron and Metal Company  
 Micromatic, Division Ex-Cell-O Corporation

**Howell**

Citizens Insurance Company of America  
 Workcenter, Division Ex-Cell-O Corporation

**Ionia**

Independent Bank Corporation  
 Ionia County National Bank



White and White, Inc.  
 John Widdicombe Company  
 Wood Broadcasting, Inc.

**Grandville**

Haven-Busch Company

**Grass Lake**

Walker Manufacturing Company,  
 Tenneco Automotive Division

**Greenville**

Commercial State Savings Bank  
 Northland Refrigeration  
 R. J. Tower Corporation

**Hastings**

E. W. Bliss Company  
 Richard M. Cook  
 Feldpausch Food Centers  
 Hastings City Bank  
 Hastings Fiber Glass Products, Inc.

**Jackson**

Aalen Aides, Inc.  
 Aeroquip Foundation and Corporation  
 Camp International, Inc.  
 Camshaft Machine Company  
 City Bank and Trust Company  
 Clark Equipment Company  
 A. P. Cook III  
 Consumers Power Company  
 Continental Baking Co., Division ITT  
 Crankshaft Machine Company  
 John Crowley Boiler Works, Inc.  
 Diecast Corporation  
 Ernst and Whinney  
 L. H. Field Company  
 (Allied Stores of Michigan)  
 General Products Corporation  
 Gilbert/Commonwealth  
 Glick Investment Company  
 Goodyear Tire and Rubber Company

Hall and Kennedy, Inc.  
 Handley Industries, Inc.  
 Harris-McBurney Company  
 Heat Controller, Inc.  
 ITT Hancock Industries, Inc.  
 Industrial Steel Treating Company  
 Jackson Citizen Patriot  
 Jackson Container Division, Green Bay Packaging, Inc.  
 Jackson Crankshaft Company  
 Jackson Drop Forge Company  
 Jacobson's  
 LeFere Forge and Machine Company  
 MacSteel Division Quanex Corporation  
 Magnimet Corporation, Jackson Iron Division  
 Mechanical Products  
 Melling Tool Company  
 Michigan Gas Storage Company  
 Michigan National Bank—Midwest  
 Michigan Utility Collection Service Company, Inc.  
 Michigan Wholesalers, Inc.  
 Modern Machine Tool Company  
 National Bank of Jackson  
 Northern Michigan Exploration Company  
 Spartan Corporation  
 Teer, Wickwire and Company  
 Blair H. Thompson

**Kalamazoo**

The American National Bank and Trust Co. of Michigan  
 Arvco Container Corporation  
 Associated Mechanical Services, Inc.  
 The Brunswick Corporation School Equipment Division  
 Clarage Fan Company, Division Zurn Industries, Inc.  
 Clausing Corporation  
 Consumers Sand and Gravel Company  
 Doubleday Brothers, Division Standex International  
 Dunkley Company  
 Durametallic Corporation  
 Peter Eckrich and Sons, Inc.  
 Ernst and Whinney  
 Fetzer Television Corporation  
 Georgia-Pacific Corporation,  
 Kalamazoo Paper Division  
 Hammond Machinery Builders, Inc.  
 Humphrey Products  
 Hydreco, A Unit of General Signal Corporation  
 Industrial State Bank and Trust Company  
 Interkal, Inc.  
 Kalamazoo Container Company,  
 Div. Green Bay Packaging, Inc.  
 Kalamazoo Gazette  
 Kalamazoo Savings and Loan Association  
 Kalamazoo Stamping and Die Company  
 Lear Siegler, Inc., Borroughs Division  
 Master-Craft Corporation  
 Mead Products Division, Mead Corporation  
 Michigan National Bank—West  
 Motion Industries, Inc.  
 Nitrogen Division, Allied Chemical Corporation  
 Saga Food Service, Educational Division  
 Mr. and Mrs. Fred N. Schroen  
 Stryker Corporation  
 A. M. Todd Company  
 Unifab Corporation  
 United Kennel Club, Inc.  
 Upjohn Company

**Lansing**

American Bank and Trust Company  
 Auto-Owners Insurance Company  
 Bank of Lansing  
 Beurmann-Marshall Corporation  
 Capitol City Lumber Company  
 Capitol Federal Savings and Loan Association

The Christman Company  
 Clark Construction Company  
 Copco Papers, Inc., Dudley Paper Division  
 Cutler Plastics Corporation  
 East Lansing State Bank  
 Ernst and Whinney  
 Farm Bureau Insurance Group  
 Farm Bureau Services, Inc.  
 Farmers Petroleum Cooperative  
 Francis N. Fine, Inc.  
 Granger Construction Company  
 Granger Container Service, Inc.  
 Granger Land Development Company  
 The John Henry Company  
 Industrial Welding, Inc.  
 Jacklin Steel Supply Company  
 Lansing Ice and Fuel Company  
 Lansing Lumber Company, Inc.  
 Lindell Drop Forge Company  
 James M. Lowder and Associates, Inc.  
 Martin Associates, Commercial Properties, Inc.  
 Michigan Agricultural Cooperative Marketing Association  
 Michigan Automobile Dealers Association  
 Michigan Farm Bureau  
 Michigan Millers Mutual Insurance Company  
 Michigan National Bank  
 Michigan Supply Company  
 Mill Supplies Corporation  
 Motor Wheel Corporation  
 NBD—Commerce Bank  
 Olofsson Corporation  
 Ransom Fidelity Company  
 Ren Plastics, a CIBA-GEIGY Company  
 Schaefer Bakeries, Inc.  
 Schmidt Brothers  
 Jack Shanker  
 Special Transportation, Inc.  
 State Journal (Federated Publications, Inc.)  
 Story Oldsmobile, Inc.  
 Summit Steel Processing Corporation  
 Tranter, Inc.  
 Union Savings and Loan Association  
 Universal Steel Company of Michigan  
 University Oldsmobile, Inc.  
 Vanco Division of Vandervoort's  
 Wohlert Corporation

**Lapeer**  
 First National Bank of Lapeer  
 Lapeer County Bank and Trust Company

**Litchfield**  
 Michigan Bank—Mid South  
 Simpson Industries, Inc.

**Manistee**  
 Martin Marietta Chemicals

**Marshall**  
 Eaton Corporation  
 Michigan National Bank

**Mason**  
 Mrs. Eben Mumford Trust

**Mendon**  
 Lear Siegler, Inc.—Haas Division

**Middleville**  
 Middleville Manufacturing Company

**Midland**  
 Dow Corning Corporation  
 Martin Marietta Corporation  
 Michigan National Bank—Midland

**Monroe**  
 Detroit Stoker Company  
 The First National Bank of Monroe  
 Jones Transfer Company  
 Michigan Gas Utilities Company

Monroe Auto Equipment Company  
 Monroe Bank and Trust

**Muskegon**  
 Aero Manufacturing and Machining Company  
 American Coil Spring Company  
 American Grease Stick Company  
 American Store Equipment Corporation  
 Bennett Pump Company  
 Bofors Lakeway, Inc.  
 Brunswick Corporation  
 Burdick and Jackson Laboratories, Inc.  
 CWC Castings Division of Textron, Inc.  
 Cannon-Muskegon Corporation  
 Canonie Offshore Company  
 Clarke Division, McGraw-Edison Company  
 Coca-Cola Bottling Company of Muskegon  
 Cole Bakeries, Inc.  
 Dresser Industries, Inc., Crane and Hoist Operations  
 EPC Industries, Inc.  
 Enterprise Brass Works Corporation  
 Fitzpatrick Electric Supply Company, Inc.  
 Fleet Engineers, Inc.  
 Geerpres Wringer Company, Division Beatrice Foods Company  
 General Products Division, Teledyne Continental Motors  
 General Telephone Company of Michigan  
 Hackley Bank and Trust, N. A.  
 Herp's (Allied Stores of Michigan)  
 Howmet Turbine Components Corporation  
 Hunter-Hughes, Inc.  
 Industrial Products Division, Teledyne Continental Motors  
 Johnson Mold and Manufacturing Company  
 Johnson Products, Inc.  
 Keene Corporation, Kaydon Bearing Division  
 Lakeshore Machinery and Supply Company  
 Lorin Industries, Coil Anodizers Division  
 Lumberman's Bank  
 C. W. Marsh Company  
 Michigan Spring Company  
 Midwest Machine and Manufacturing Company  
 Muskegon Bank and Trust Company  
 Muskegon Chronicle  
 Muskegon Construction Company  
 Muskegon Federal Savings and Loan Association  
 Muskegon Paper Box Company  
 Muskegon Screw Works  
 Muskegon Tool Industries, Inc.  
 Neway Division, Lear Siegler, Inc.  
 Newkirk Electric Associates, Inc.  
 Northern Boiler Mechanical Contractors  
 Port City Machine and Tool Company  
 Quality Stores, Inc.  
 Reid Tool Supply Company  
 Sealed Power Corporation  
 Shaw-Walker Company  
 E. H. Sheldon and Company  
 Steel Fabricating Company of Muskegon  
 Steindler Paper Company  
 Thill Penn Oil Sales  
 Universal Camshaft Company  
 Vandervelde's Furniture and Carpet Company  
 S. D. Warren, Division Scott Paper Company  
 Webb Chemical Service Corporation  
 Westran Corporation  
 Whittaker Electric Company  
 Zephyr, Inc.

**Niles**  
 Garden City Fan and Blower Company

Kawneer Company, Division of American Metal Climax, Inc.  
 Niles Precision Company  
 Pacesetter Bank and Trust—Southwest

**North Branch**  
 Chaso Tool Division, Lear Siegler, Inc.

**Okemos**  
 Louis E. Legg, Jr.  
 Home Finance, Inc.

**Otsego**  
 Menasha Corporation, Paperboard Division  
 Parker-Hannifin Corporation

**Owasso**  
 Argus Press Company  
 Duall Industries, Inc.  
 Midland Ross Foundation  
 Pacesetter Bank and Trust Charitable Trust  
 Toledo Commutator Company

**Petoskey**  
 Michigan National Bank—North

**Pinconning**  
 Magline, Inc. Charitable Trust

**Plainwell**  
 Plainwell Paper Co., Inc.

**Port Huron**  
 Michigan National Bank  
 Sperry Foundation

**Portland**  
 TRW Michigan Division, TRW, Inc.  
 Central Soya Co., Inc.

**Rockford**  
 The Janssen Foundation  
 Wolverine World Wide, Inc.

**Rockwood**  
 Calgon Corporation

**Saginaw**  
 Alvin G. Benson  
 Boron Oil Company  
 J. P. Burroughs and Son, Inc., Aggregate Division  
 B. Clinkson and Sons, Inc.  
 Eaton Corporation  
 Ernst and Whinney  
 First State Bank of Saginaw  
 Fischer-Flack, Inc.  
 Garb-Ko, Inc.  
 R. C. Hendrick and Son, Inc.  
 A. W. Irish and Associates  
 Jacobson's  
 Michigan National Bank  
 Michigan National Bank—Valley  
 Michigan Sugar Company  
 Morley Brothers Foundation  
 Motion Industries, Inc.  
 Northern Industrial Supply, Inc.  
 Peet Packing Company  
 Frank M. Polasky  
 Saginaw News  
 Second National Bank of Saginaw  
 Severance Tool Industries, Inc.  
 Spence Brothers  
 Sugar Beet Products Company  
 Tupes, Inc.  
 United Federal Savings and Loan  
 United Plastics Division, ITT  
 Harvey Randall Wickes Foundation  
 Wolohan Lumber Company

**Saline**  
 Hoover Universal, Inc.

**Schoolcraft**  
 Quality Films, Inc.

**South Haven**  
 Canonie Construction Company  
 Citizens Trust and Savings Bank

Everett Piano Company  
 South Haven Rubber Company

**Spring Lake**  
 B & R Metal Products, Inc.  
 Burnside Manufacturing Company  
 Elastodyne/A Unit of ITT  
 Blackburn Company  
 Ermanco, Inc.  
 Meridian, Inc.  
 Rycenga Lumber Company  
 Spring Lake Branch Peoples Bank and Trust Company  
 Structural Concepts Corporation  
 Wigger's General Machine, Inc.

**St. Clair**  
 Lawrence B. Avison, Jr.  
 Diamond Crystal Salt Company

**St. Joseph**  
 Auto Specialties Manufacturing Company  
 Canteen Company of S. W. Michigan, Inc.  
 Dynac Corporation  
 Holland Construction Company  
 Imperial Printing Company  
 Palladium Publishing Company  
 The Peoples State Bank of St. Joseph  
 Pri Mar Petroleum, Inc.  
 F. P. Rosback Company  
 E. C. Smith and Associates, Inc.  
 The Tiscornia Foundation, Inc.  
 Vail Rubber Works, Inc.  
 Whirlpool Corporation and Foundation

**Stevensville**  
 Cities Service Oil Company

**Sturgis**  
 Abbott Laboratories Fund (Ross Laboratories Division)  
 Burr Oak Tool and Gauge Company  
 The Citizens State Bank  
 First National Bank and Trust Company  
 Grumman Olson, Division Grumman Allied Industries, Inc.  
 Harter Corporation  
 Kirsch Company  
 Oak Products, Inc.  
 Sturgis Foundry Corporation  
 Sturgis Molded Products Company

**Tawas**  
 Michigan Bank—Huron

**Three Rivers**  
 Armstrong Machine Works  
 Clifton Engineering Co., Inc.  
 Dock Foundry Company  
 Fibre Converters Foundation, Inc.  
 First National Bank of Three Rivers  
 Johnson Corporation  
 Michigan Power Company  
 Peterson Spring Corporation  
 W. F. Wells and Sons, Inc.

**Traverse City**  
 Julius H. Beers  
 Boride Products, Inc.  
 Cone Drive, Div. Ex-Cell-O Corporation  
 Michigan National Bank—Grand Traverse  
 Pacesetter Bank and Trust—Grand Traverse  
 Traverse City Record Eagle  
 WPBN-TV and WTOM-TV, Inc.

**Vassar**  
 Eaton Corporation

**Whitehall**  
 Howmet Turbine Component Corporation Divisions

**Ypsilanti**  
 Ann Arbor Ceiling and Partition Co., Inc.  
 Richard J. Kury

**Zeeland**

Aerospace, Div. Ex-Cell-O Corporation  
John Thomas Batts, Inc.  
DeWitt Foundation Trust  
Fabrication Technology Div.,  
Lear Siegler, Inc.  
Sealed Power Corporation

---

**Out of State**

---

**Arkansas**

Hough Family Foundation

**California**

The Lear Siegler Foundation  
Teledyne Charitable Trust Foundation

**Connecticut**

Connecticut Mutual Life Insurance  
Company  
The UPS Foundation

**Georgia**

The Coca-Cola Company

**Illinois**

Abbott Laboratories Fund  
Bastian-Blessing Co., Inc.  
Beatrice Foods Company  
Brunswick Foundation, Inc.  
Canteen Corporation  
Illinois Tool Works Foundation  
Inland Steel Company  
Kraft, Inc., Kra-Pak Division and  
Humko Products  
Oscar Mayer Foundation  
UOP Foundation

**Indiana**

Central Soya Foundation  
Credithrift Financial—Richard E. Meier  
Foundation  
Essex Group, Inc.  
Miles Laboratories Foundation  
Peter Eckrich and Sons, Inc.

**Maryland**

Martin Marietta Corporation

**Massachusetts**

Houghton Mifflin Company  
John Hancock Mutual Life Insurance  
Company  
Liberty Mutual Insurance Companies  
Standex International Foundation

**Minnesota**

Bemis Company Foundation  
DeLuxe Check Printers Foundation  
General Mills Foundation  
Minnesota Mining and Manufacturing  
Foundation, Inc.

**Nebraska**

Berkshire Hathaway, Inc.

**New Jersey**

Airco, Inc.  
Allied Foundation  
Grumman Allied Industries, Inc.  
Hoffman-LaRoche, Inc.  
Inmont Corporation  
Merck Company Foundation  
Prudential Insurance Company of  
America  
Warner-Lambert Foundation

**New York**

Allied Stores Foundation, Inc.  
Amax Foundation, Inc.  
American Brands, Inc.  
American Standard Foundation  
Bristol-Meyers Company  
CBS, Inc.  
Carrier Corporation  
Continental Corporation Foundation  
Curtis-Burns/Pro-Fac Foundation

The General Foods Fund, Inc.  
Grace Foundation, Inc.  
Graybar Electric, Inc.  
International Business Machines  
Corporation  
International Telephone and Telegraph  
Corporation  
Kraft, Inc., Breakstone Sugar Creek  
Foods Division  
Samuel I. Newhouse Foundation, Inc.  
New York Life Insurance Company  
J. C. Penney Company, Inc.  
Philip Morris, Inc.  
Pinkerton's, Inc.  
The S & H Foundation, Inc.  
Standard Motor Products, Inc.  
Sterling Drug Company  
United Industrial Corporation  
Western Electric Fund

**North Carolina**

R. J. Reynolds Industries, Inc.

**Ohio**

Acme-Cleveland Foundation  
American Aggregates Corporation  
Anderson Foundation  
Borden Foundation, Inc.  
Champion Spark Plug Company  
Chessie System, Inc.  
Cleveland-Cliffs Foundation  
Eaton Charitable Fund  
Firestone Trust Fund  
G & T Industries of Ohio  
The General Tire Company  
Foundation, Inc.  
Goodyear Tire and Rubber Company  
Fund  
The Hubbard Company  
Knight Foundation  
Marathon Oil Company  
Robert S. Marx Testamentary Trust  
The Mead Corporation Foundation  
Midland Ross Foundation  
Nationwide Foundation  
Parker-Hannifin Foundation  
Procter and Gamble Fund  
Republic Steel Corporation  
The Scott and Fetzer Foundation  
The Standard Oil Company  
Stouffer Foods Corporation Fund  
TRW Foundation  
Vistron Corporation  
Warner and Swasey Foundation

**Oklahoma**

Cities Service Foundation

**Pennsylvania**

Allegheny Ludlum Industries, Inc.  
The Cyclops Foundation  
Kennametal, Inc.  
National Steel Corporation  
PPG Industries Foundation  
Rockwell International Corporation Trust  
Vulcan, Inc. Charitable Trust

**South Carolina**

Cogsdill Tool Products, Inc.

**Texas**

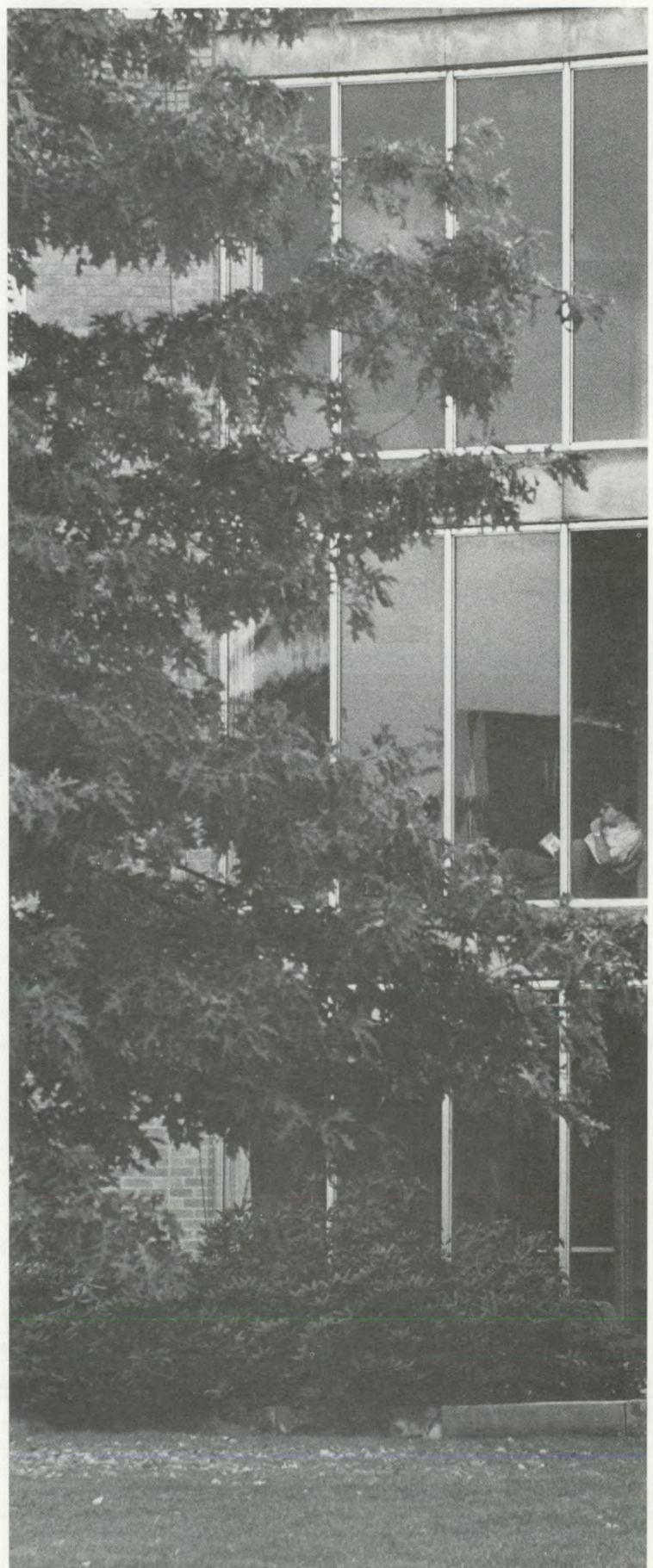
Cooper Industries Foundation  
PepsiCo Foundation, Inc.  
Quanex Corporation  
Tandy Corporation  
Tenneco, Inc.

**Virginia**

The Continental Group Foundation, Inc.  
National Automobile Dealers  
Charitable Foundation  
Reynolds Metals Company Foundation

**Wisconsin**

Green Bay Packaging, Inc.  
Kimberly-Clark Foundation  
Koehring Foundation, Inc.  
Lakehead Pipe Line Company, Inc.  
Menasha Corporation



# Advancement

## Piano Scholarship Named For Former Professor

President Joseph G. Smoot recently announced the establishment of the Elaine Myers Taylor Memorial Scholarship to be awarded annually to a student majoring or minoring in piano.

Mrs. Taylor was assistant professor of music at Andrews at the time of her death in 1978. The fund was established by Dr. Morris Taylor, currently professor of music at Andrews, in honor of his late first wife.

The scholarship provides \$5,000 to be invested as an endowment in perpetuity, from which the interest will be used for one scholarship each year. The scholarship recipient must demonstrate performing excellence, show professional potential and use the scholarship to further his or her professional career.

Mrs. Taylor received a bachelor of arts degree from Walla Walla College, College Place, Wash., and a master's degree from Columbia University, New York, N.Y., before undertaking advanced studies in piano at the Juilliard School of Music and Indiana University. She was assistant professor of music at Pacific Union College, Angwin, Calif., as well as Andrews.

Mrs. Taylor's piano teachers included Mme. Olga Samaroff, John Crown and Lillian Pettibone and she was coached as a duo-pianist with Vronsky and Babin, Nelson and Neal, and Gold and Fizdale. She participated in master classes at Tanglewood and Aspen Music Festivals and traveled extensively

throughout the country with her husband and family to participate in family concerts and various other musical appearances.

Anyone wishing to make additional contributions to the Elaine Myers Taylor Memorial Scholarship Fund can contact Andrews' office of development. Application for the scholarship may be submitted to the dean of the college in which the student is enrolled.

## \$1,000 Grant, Other Gifts, Swell Endowment

The Walter E. and Golda J. Murray Endowed Scholarship, thanks to a \$1,000 grant from Huguley Memorial Hospital and several other gifts, has grown to \$11,000, according to President Joseph Smoot. Income to the account has accelerated following the death of Walter E. Murray on January 27 in Colorado Springs, Colo.

The endowed scholarship, initiated by their children in 1979, has since received numerous contributions from other members of the family, friends and organizations. The original intent was to bring together a total of \$5,000 by their three children, Milton, Virginia and Cloey. However, once the project got underway various other interested parties came to the fore and chose to participate.

The monies generated by the fund are committed to assist upper division students in the School of Business who show promise of a valuable professional contribution to the mission of the Adventist church. The Murrays graduated

from Andrews in 1919, and gave almost 49 years of service to the mission of the church, most of that in Latin America. Murray began denominational work in 1914 as a bookkeeper and accountant, a position he also held here during his student years.

"It is hoped that individuals and institutions will contribute to this Murray scholarship fund," said Smoot. "As it further materializes we will be able to offer six or seven scholarships to business students who not only need the help, but give promise of service throughout the country."

Those wishing to contribute to the fund should make gifts payable to Andrews University—Walter Murray Fund. It is hoped that the fund will increase to at least \$15,000.

## Scholarship Created For Religion Majors

President Joseph G. Smoot has announced the establishment of the Donald W. and Mary K. Hunter Endowed Scholarship for undergraduate religion majors. The scholarship is in the amount of \$25,000.

Hunter graduated from Andrews with bachelor of arts and bachelor of theology degrees. He received a bachelor of laws degree from LaSalle University in 1960.

Hunter was president of the Pennsylvania, Ohio and Georgia-Cumberland Conferences. In India he was the president of the Northeast Union and the Northwestern Union Conferences and the Telegu Mission. He served as associate secretary of the General Conference from 1966 to 1975 when he retired. Since that time he has continued to work as the General Conference representative on the Loma Linda University campus in charge of medical overseas workers and Cambodian relief operations.

Mrs. Hunter is currently librarian at Loma Linda Foods and was librarian at both Washington Adventist Hospital and Mount Vernon Academy.

In announcing the scholarship, Smoot said, "The Hunters have contributed much to the church throughout the world. This scholarship will enable others to continue the work that they have done and the work that they have been such a vital part of for so many years. Their leadership, inspiration and dedication have been a real source of strength and blessing to many."

## Scholarship to Benefit Music Students

The Virginia Hamel Memorial Scholarship Fund, an endowed scholarship of \$300,000, has been established in memory of Miss Hamel, a public school teacher from Milwaukee, Wis.

Before her death, Miss Hamel worked closely with her cousin, Dr. Paul Hamel, former chairman of Andrews' music department, in setting up the scholarship fund. Ninety percent of her estate went to the Andrews endowed scholarship and the remainder went to the Milwaukee Junior Academy.

Miss Hamel was very active in the Milwaukee Adventist church and was interested in seeing the work of Christian education continue. She died in January 1982. The money received from the investment of the estate will be used for scholarships for students majoring in music.

## Leonard Hill Memorial Established

Library Director Marley Soper announces the establishment of the Leonard Hill Memorial Fund to benefit the James White Library. The fund is in memory of Hill who died Feb. 4, 1983, in Punta Gorda, Fla.

Hill served Andrews for 22 years. He was associate professor and chairman of the library science department, sponsor of the Student Association and associate director of four European Study Tours.

Memorial fund gifts will be used to purchase needed equipment in the periodicals department of the James White Library, Soper said. Anyone desiring to contribute to the fund can make a check payable to Andrews University—Leonard Hill Memorial, and mail it to the office of development.



Donald and Mary Hunter



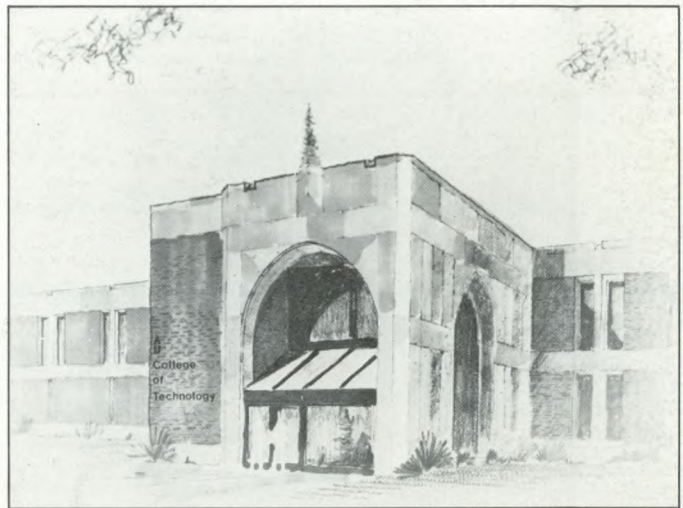
Leonard Hill

Andrews University  
Berrien Springs, Mich. 49104

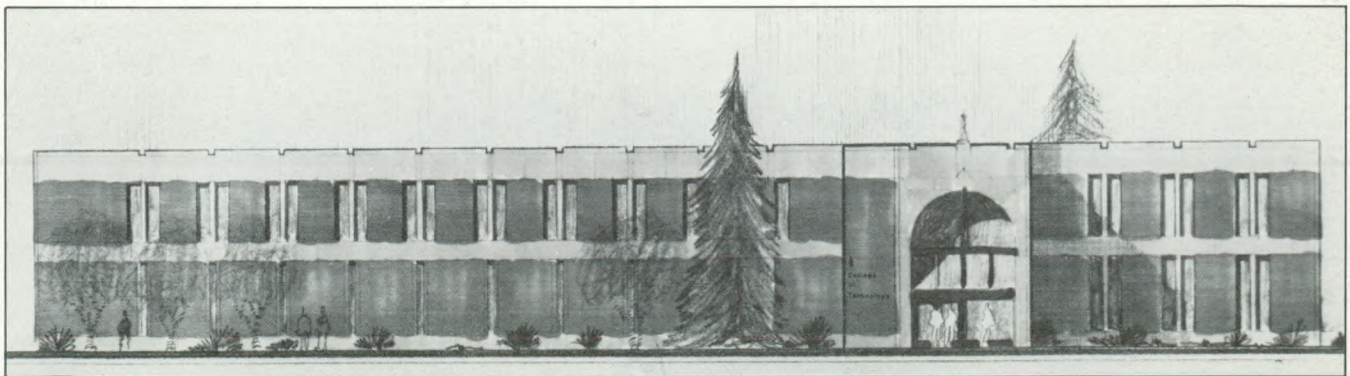
Address Correction Requested

Non-profit Organization  
**U.S. Postage  
Paid**  
Permit Number 5  
Berrien Springs, Mich.

P 900004005 EL 000 05/16/83  
ATLANTIC UNION COLLEGE  
LIBRARY  
S LANCASTER MA 01561



Proposed College of  
Technology Building.



Andrews University, Berrien Springs, MI 49104