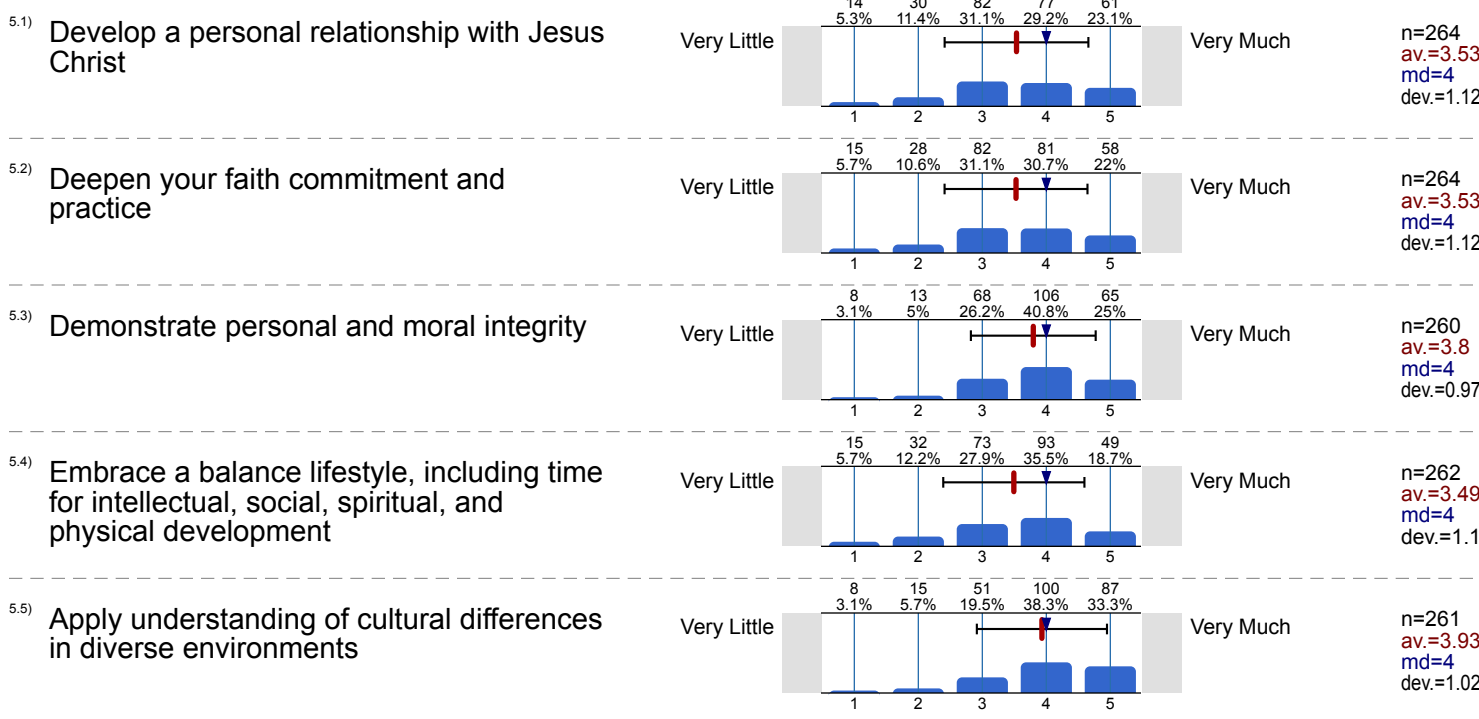
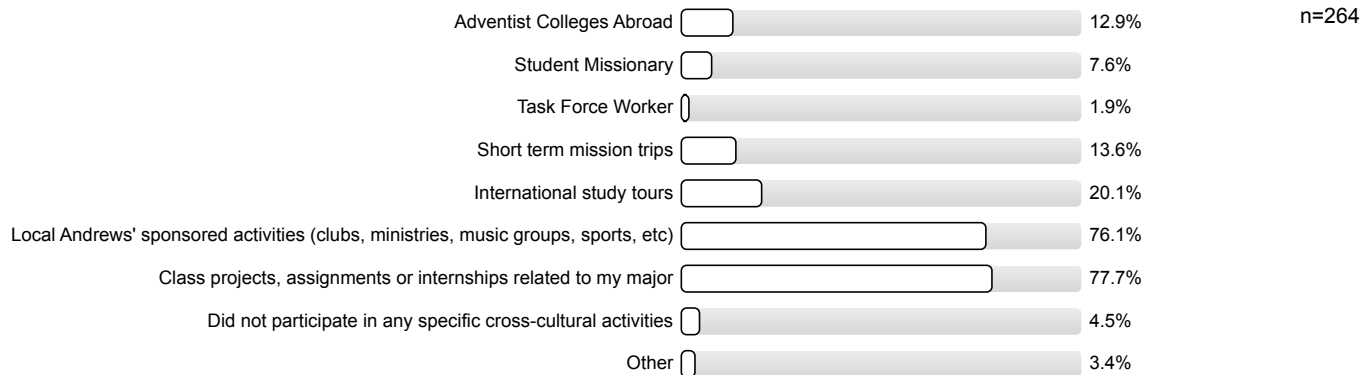


5. Affirm Faith

How much has your experience with Andrews University prepared you to...



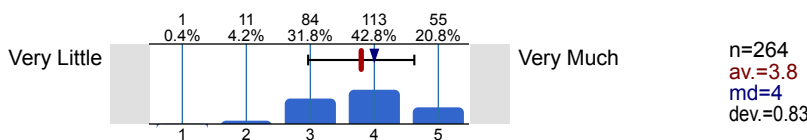
5.6) Which of the following activities have you participated in while studying with Andrews University that have allowed you to interact directly with people of other cultures?



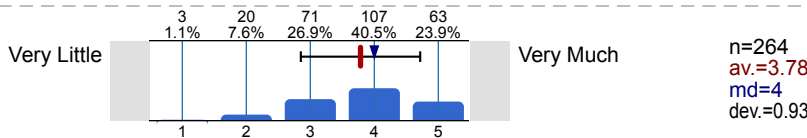
6. Change the World

How much has your experience with Andrews University prepared you to...

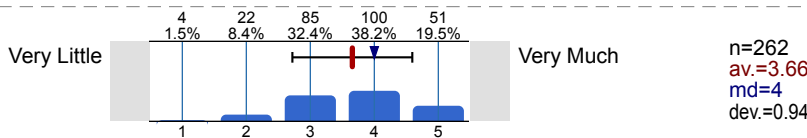
6.1) Engage in creative problem-solving and innovation



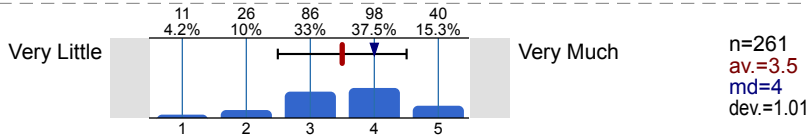
6.2) Engage in generous service to meet human needs



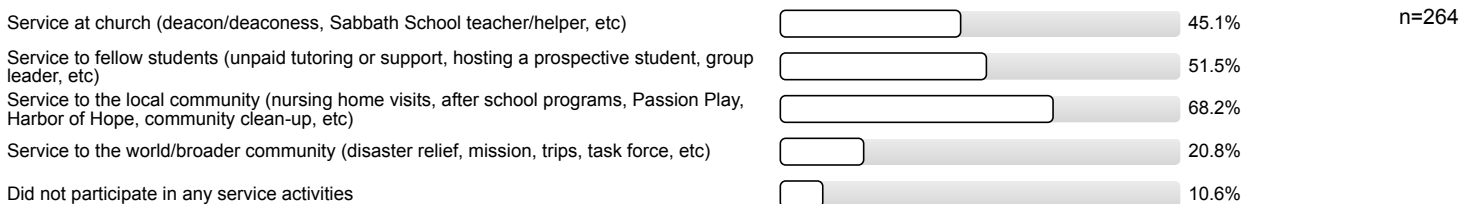
6.3) Apply collaborative leadership to foster growth and promote change



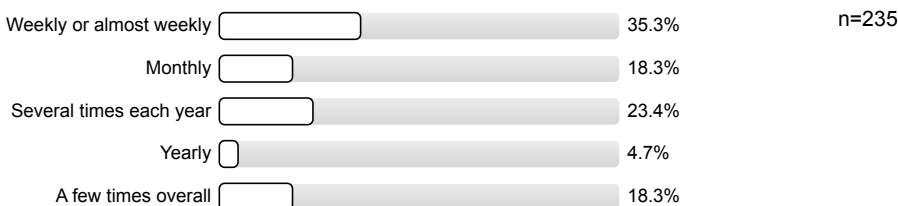
6.4) Engage in activities consistent with the worldwide mission of the Seventh-day Adventist church



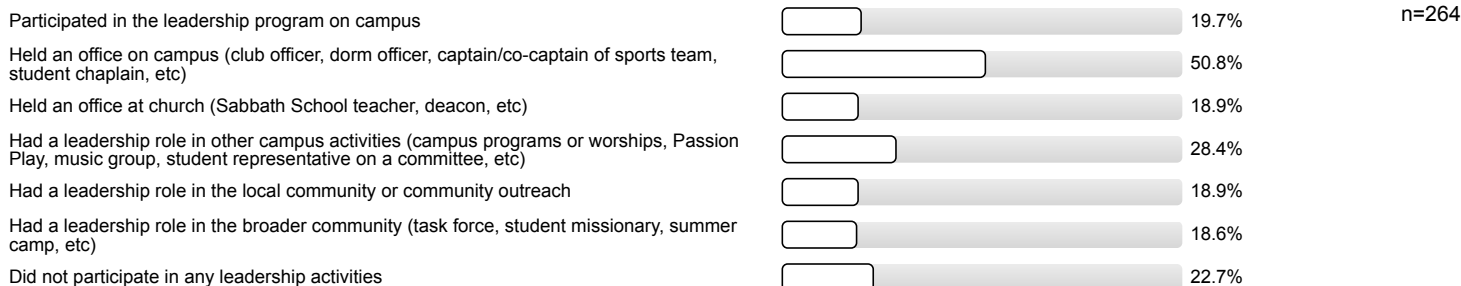
6.5) What types of service activities have you participated in while studying with Andrews University?



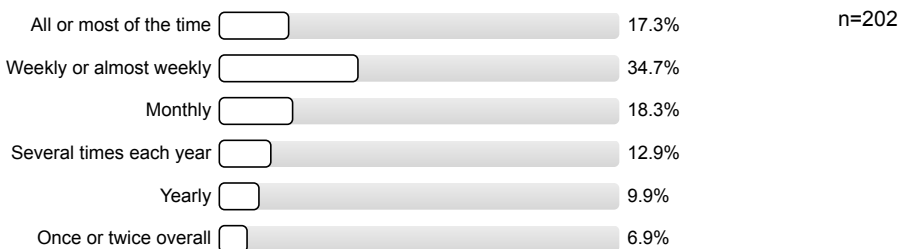
6.6) How often have you participated in service activities while studying with Andrews University? (Choose the answer that best describes your level of participation)



6.7) What types of leadership activities have you participated in while studying with Andrews University?



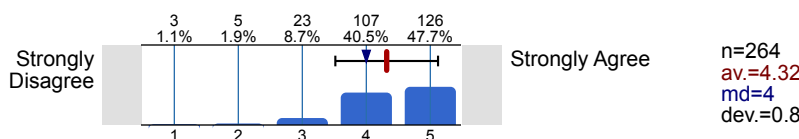
6.8) How often have you participated in leadership activities while studying with Andrews University? (Choose the answer that best describes your level of participation)



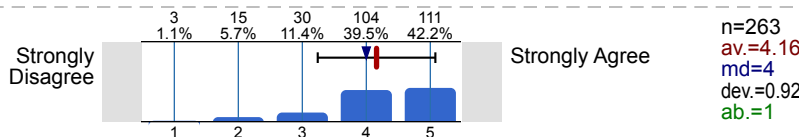
8. Program

How much do you agree with the following statements about your major program?

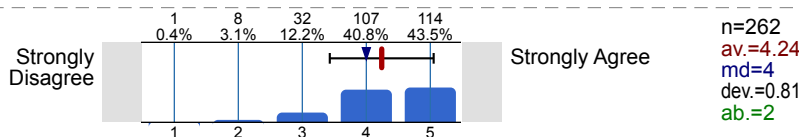
8.1) The program was academically stimulating



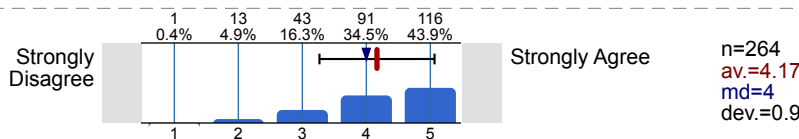
8.2) The program had sufficient variety in advanced course and program offerings



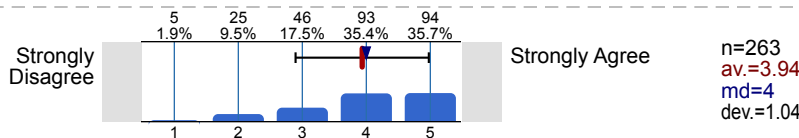
8.3) Advanced course and program offerings had sufficient depth of subject matter



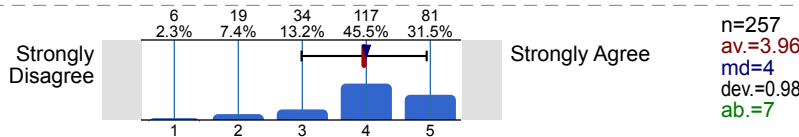
8.4) There was appropriate opportunity for research and/or creative work



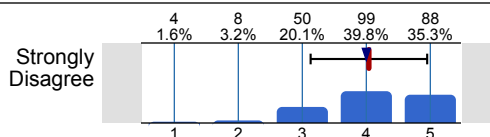
8.5) There were sufficient opportunities for the practical application of learning (internships, field work, related experiences)



8.6) There were adequate facilities and specialized equipment (studios, computers, instruments, lab supplies, etc)



8.7) Library resources were adequate for the program (MeLCat, e-journals, databases, etc)

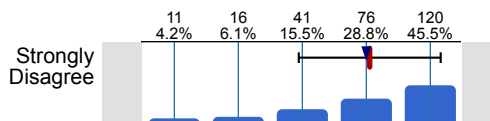


Strongly Agree

n=249
av.=4.04
md=4
dev.=0.91
ab.=15

9. Faculty
How much do you agree with the following statements about your major faculty?

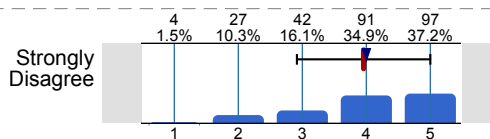
9.1) Academic advising was helpful



Strongly Agree

n=264
av.=4.05
md=4
dev.=1.11

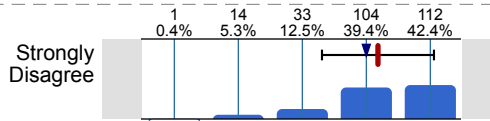
9.2) Faculty provided good advice about opportunities for careers and graduate school



Strongly Agree

n=261
av.=3.96
md=4
dev.=1.04
ab.=3

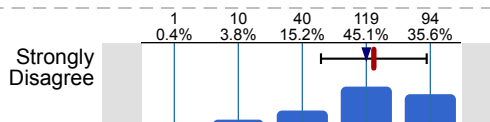
9.3) Faculty were aware of new developments in their field or discipline



Strongly Agree

n=264
av.=4.18
md=4
dev.=0.87

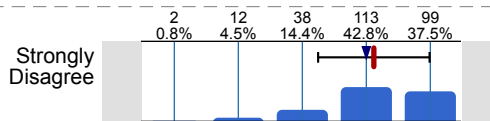
9.4) Faculty used technology effectively to enhance their teaching



Strongly Agree

n=264
av.=4.12
md=4
dev.=0.83

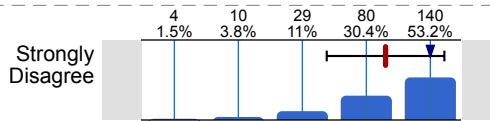
9.5) Faculty used effective teaching methods that helped me learn



Strongly Agree

n=264
av.=4.12
md=4
dev.=0.87

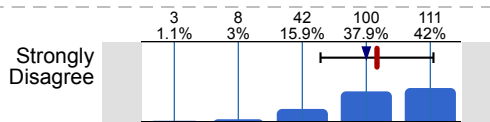
9.6) Faculty members showed genuine interest in each student



Strongly Agree

n=263
av.=4.3
md=5
dev.=0.92

9.7) Faculty taught me how Christian faith and ethics relate to my field

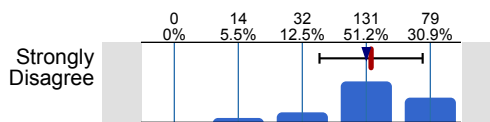


Strongly Agree

n=264
av.=4.17
md=4
dev.=0.88

10. General:
How much do you agree with the following statements about your major in general?

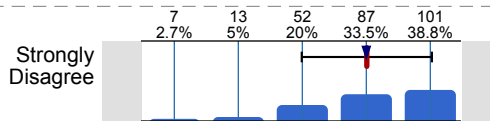
10.1) Upon graduation, I believe that I will be well prepared for a job or further study in my field



Strongly Agree

n=256
av.=4.07
md=4
dev.=0.81
ab.=4

10.2) I would recommend this program to a friend

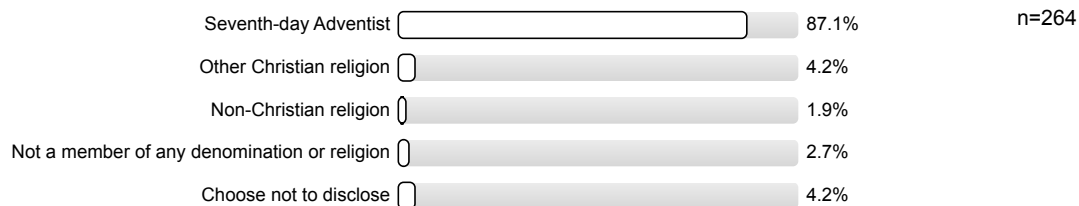


Strongly Agree

n=260
av.=4.01
md=4
dev.=1.02
ab.=2

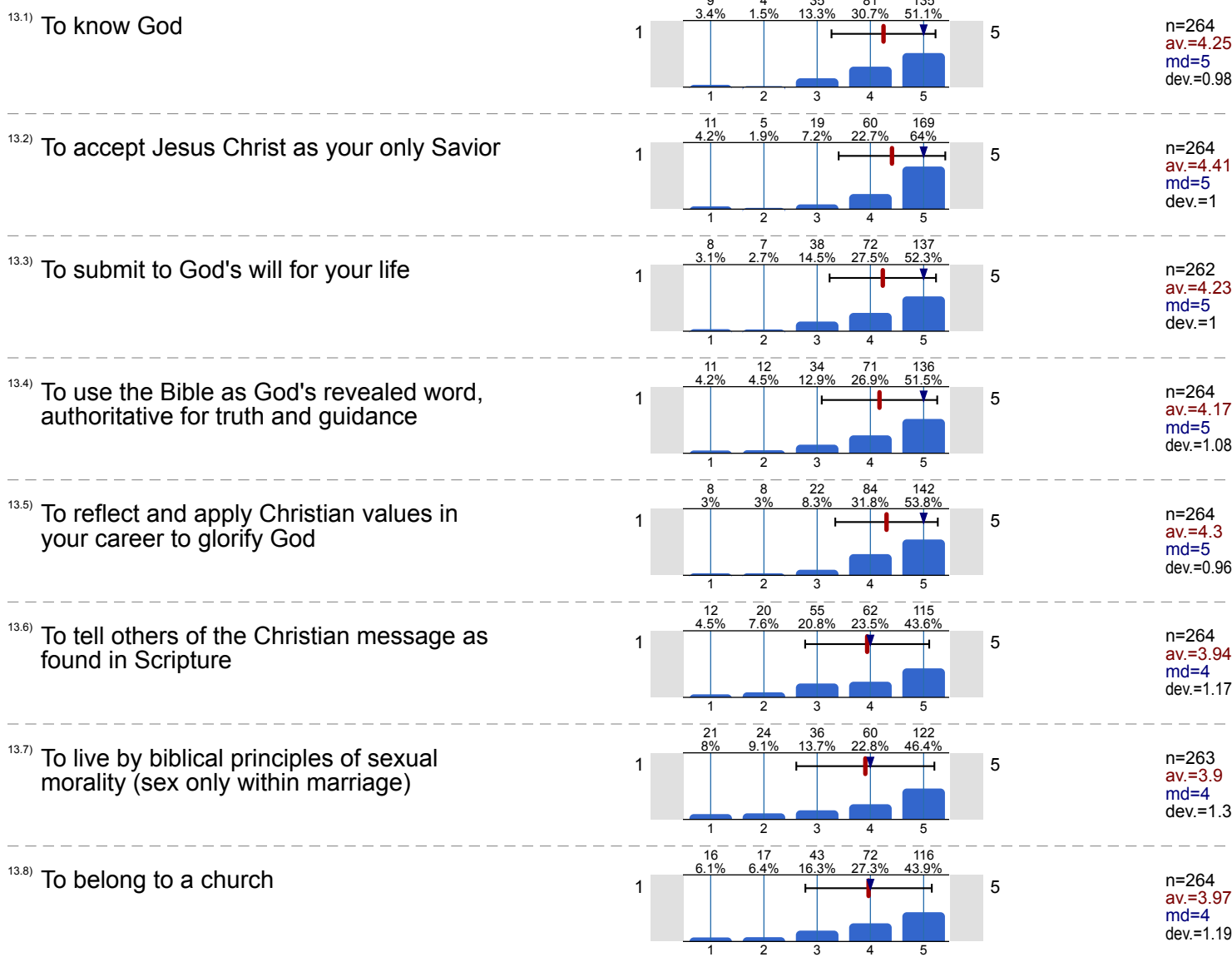
12. Spiritual Commitment:
Please answer the following questions about religion and spirituality

12.1) What is your religious affiliation?

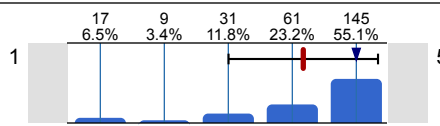


13. Spiritual Commitment:
How committed are you to the following?

1=Have not made, 2=Am not keeping, 3=Keep when convenient, 4=Make considerable effort to keep, 5=Willing to keep even at considerable personal sacrifice

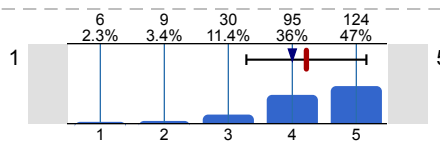


13.9) To observe the seventh-day Sabbath



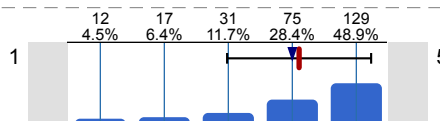
n=263
av.=4.17
md=5
dev.=1.17

13.10) To live a lifestyle that promotes physical health



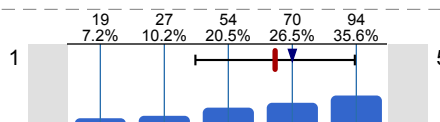
n=264
av.=4.22
md=4
dev.=0.94

13.11) To pray daily



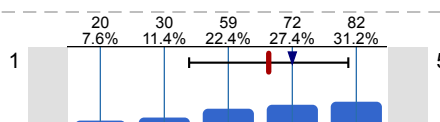
n=264
av.=4.11
md=4
dev.=1.13

13.12) To read the Bible or devotional literature daily



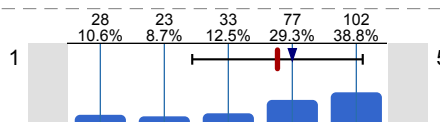
n=264
av.=3.73
md=4
dev.=1.25

13.13) To participate actively in the life and work of a local church



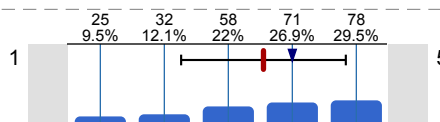
n=263
av.=3.63
md=4
dev.=1.24

13.14) To give systematic tithes and offerings



n=263
av.=3.77
md=4
dev.=1.33

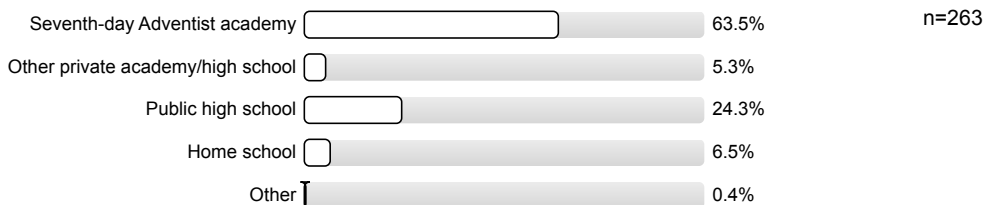
13.15) To support world evangelism through personal participation or financial contribution



n=264
av.=3.55
md=4
dev.=1.29

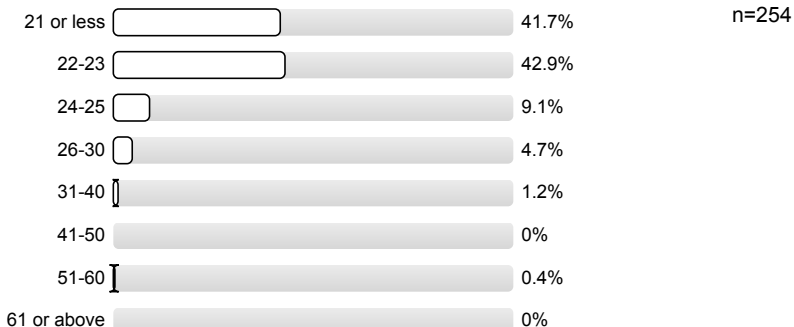
14. Demographics

14.1) What was the major source of your high school (secondary) education? (If you attended two types equally, please mark the one you feel influenced you most)



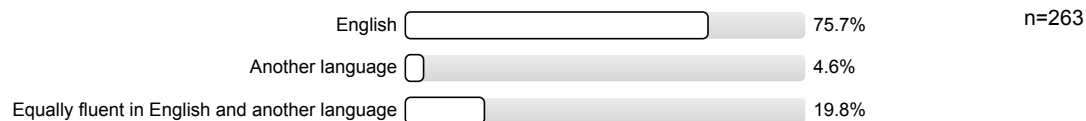
n=263

14.3) What age group are you in?

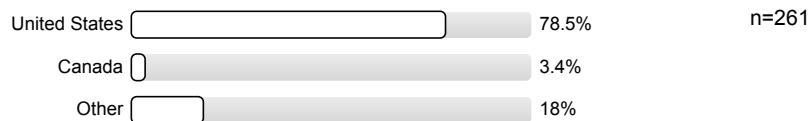


n=254

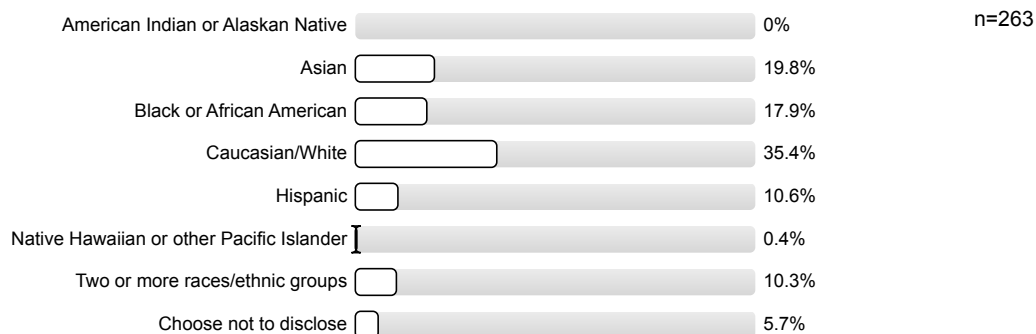
14.4) What language are you most fluent in?



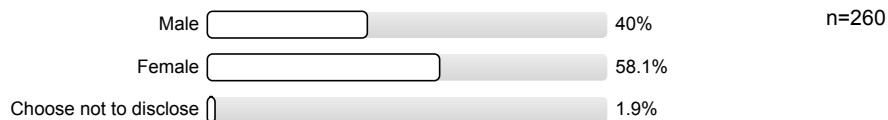
14.5) What is your citizenship?



14.7) Please indicate the racial or ethnic group you most closely identify with.



14.8) What is your gender?

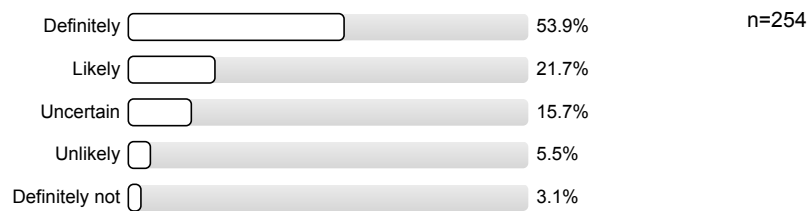


15. What are your future plans?

15.1) Do you intend to seek employment within a Seventh-day Adventist institution (conference, church, hospital, school, etc) in the five years after graduation from Andrews, or after completing graduate school?



15.2) How likely are you to pursue further studies?



Profile

Compilation: Senior Survey 2020

Values used in the profile line: Mean

