

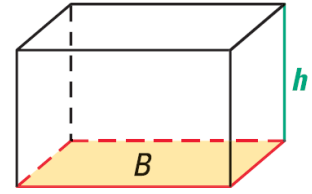
Geometry

12.4 Volume of Prisms and Cylinders (12.2)

Volume of a Prism

$$V = \underline{\hspace{2cm}}$$

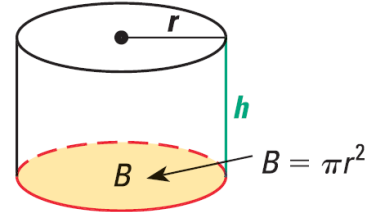
Where B = base area, h = height of prism



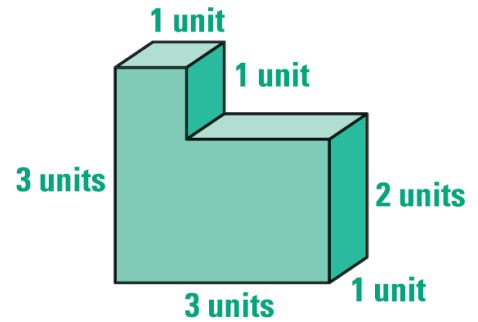
Volume of a Cylinder

$$V = \underline{\hspace{2cm}}$$

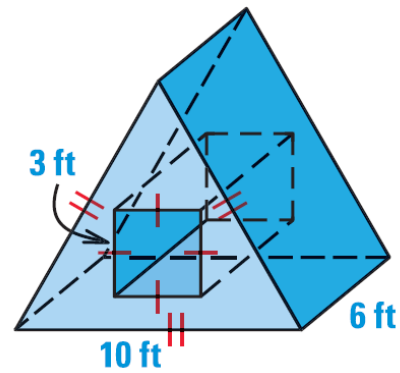
Where r = radius, h = height of cylinder



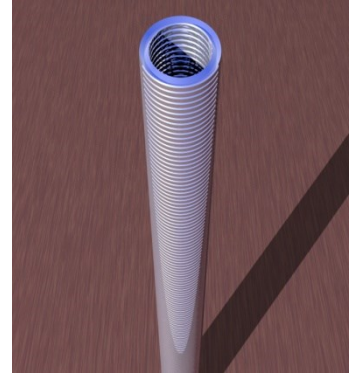
Find the volume of the figure.



Find the volume.



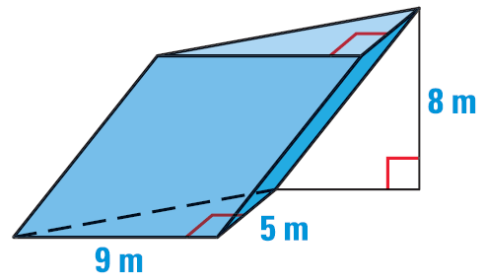
There are 150 one-inch washers in a box. When the washers are stacked, they measure 9 inches in height. If the inside hole of each washer has a diameter of $\frac{3}{4}$ inch, find the volume of metal in one washer.



Cavalieri's Principle

If two solids have the same _____ and the same _____ at every level, then _____.

Find the volume.



Assignment: 632 #2, 4, 6, 8, 12, 14, 16, 18, 20, 22, 23, 24, 26, 28, 30, 37, 38, 40, 49, 50 = 20 total